

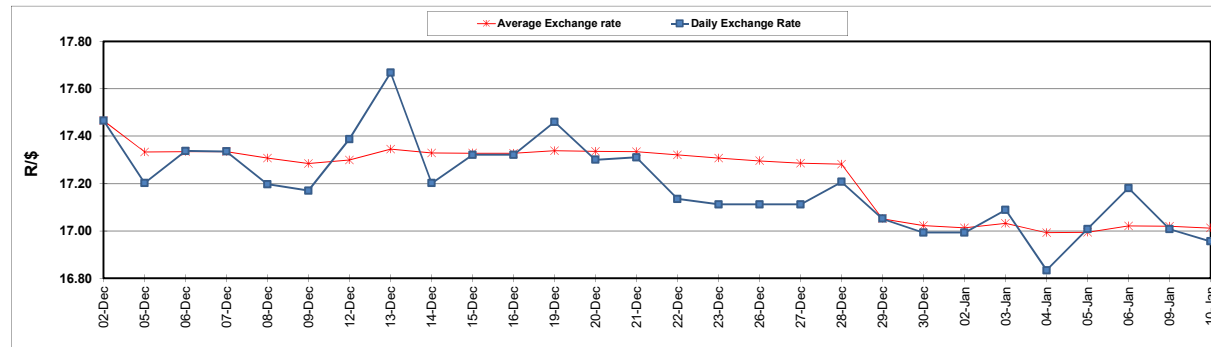
South African Cents per Litre (SA c/l)	PETROL 95 ULP	PETROL 93 ULP & LRP	DIESEL 0.05%	DIESEL 0.005%	ILL. PAR.
GAUTENG PUMP PRICE AS FROM 04/01/2015	2,140.000	2,110.000	-	-	-
WHOLESALE PRICE AS FROM 04/01/2015	-	-	2,122.870	2,141.270	1,525.958
SINGLE NATIONAL MAXIMUM RETAIL PRICE	-	-	-	-	2,009.000
BASIC FUEL PRICE - 10/01/2023	1,062.616	1,037.023	1,269.449	1,277.946	1,294.244
PRESS RELEASE CONTRIBUTION TO BFP 04/01/2023 - 10/01/2023	1,050.390	1,020.390	1,261.630	1,280.030	1,307.128
UNIT OVER/(UNDER) RECOVERY - 10/01/2023	(12.226)	(16.633)	(7.819)	2.084	12.884
AVERAGE BASIC FUEL PRICE 29/12/2022 - 10/01/2023	1,076.850	1,053.068	1,279.410	1,289.725	1,315.469
AVERAGE UNIT OVER/(UNDER) RECOVERY 29/12/2022 - 10/01/2023	55.362	49.145	91.998	105.416	77.436

ANALYSIS MOVEMENT OF AVERAGE OVER/(UNDER) RECOVERY

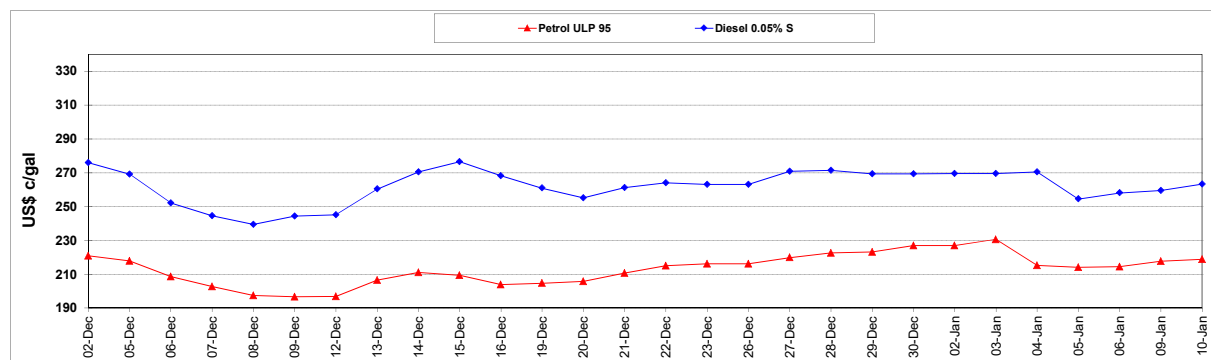
	PETROL 95	PETROL 93	DIESEL 0.05%	DIESEL 0.005%	ILL. PAR.
- MOVEMENT IN INTERNATIONAL PRODUCT PRICES	43.044	37.098	77.363	90.663	62.390
- MOVEMENT IN EXCHANGE RATE	12.318	12.046	14.635	14.753	15.047
AVERAGE UNIT OVER/(UNDER) RECOVERY 29/12/2022 - 10/01/2023	55.362	49.145	91.998	105.416	77.436

R/\$ EXCHANGE RATE - (R/\$16.9555 - 10/01/2023)

EXCHANGE RATE USED IN BASIC FUEL PRICE



INTERNATIONAL PRODUCT PRICES OF BASKET USED IN BASIC FUEL PRICE



BASIC FUEL PRICE IN SA CENTS PER LITRE

