

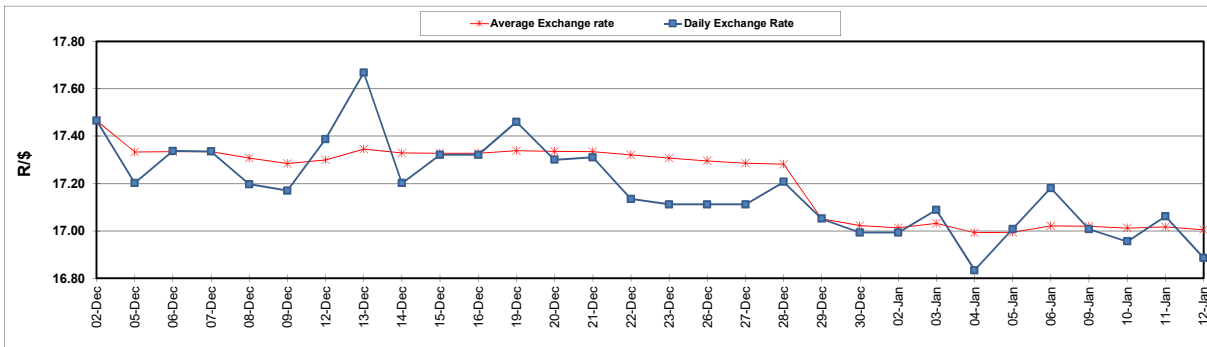
South African Cents per Litre (SA c/l)	PETROL 95 ULP	PETROL 93 ULP & LRP	DIESEL 0.05%	DIESEL 0.005%	ILL. PAR.
GAUTENG PUMP PRICE AS FROM 04/01/205	2,140.000	2,110.000	-	-	-
WHOLESALE PRICE AS FROM 04/01/205	-	-	2,122.870	2,141.270	1,525.958
SINGLE NATIONAL MAXIMUM RETAIL PRICE	-	-	-	-	2,009.000
BASIC FUEL PRICE - 12/01/2023	1,121.037	1,099.473	1,340.817	1,347.966	1,362.064
PRESS RELEASE CONTRIBUTION TO BFP 04/01/2023 - 12/01/2023	1,050.390	1,020.390	1,261.630	1,280.030	1,307.128
UNIT OVER/(UNDER) RECOVERY - 12/01/2023	(70.647)	(79.083)	(79.187)	(67.936)	(54.936)
AVERAGE BASIC FUEL PRICE 29/12/2022 - 12/01/2023	1,082.931	1,059.785	1,288.293	1,298.025	1,321.149
AVERAGE UNIT OVER/(UNDER) RECOVERY 29/12/2022 - 12/01/2023	34.405	27.551	63.156	76.187	56.160

ANALYSIS MOVEMENT OF AVERAGE OVER/(UNDER) RECOVERY

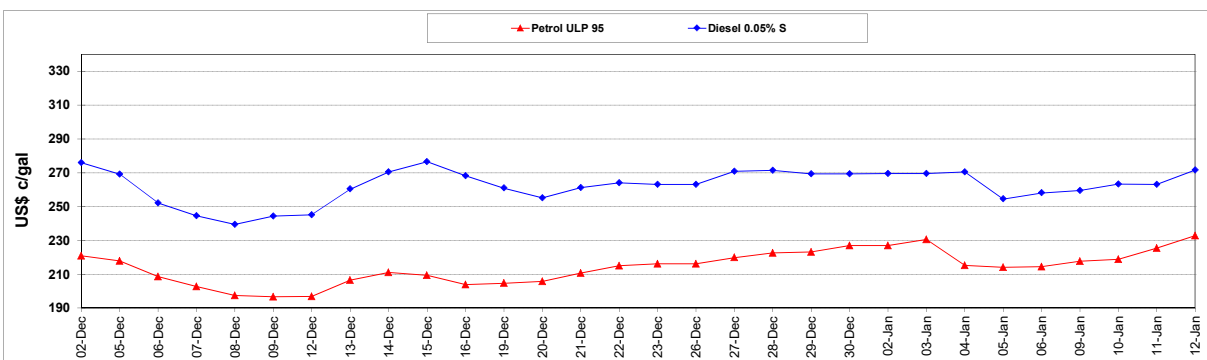
	PETROL 95	PETROL 93	DIESEL 0.05%	DIESEL 0.005%	ILL. PAR.
- MOVEMENT IN INTERNATIONAL PRODUCT PRICES	21.566	14.986	47.882	60.799	40.499
- MOVEMENT IN EXCHANGE RATE	12.838	12.564	15.273	15.388	15.662
AVERAGE UNIT OVER/(UNDER) RECOVERY 29/12/2022 - 12/01/2023	34.405	27.551	63.156	76.187	56.160

R/\$ EXCHANGE RATE - (R/\$16.8855 - 12/01/2023)

EXCHANGE RATE USED IN BASIC FUEL PRICE



INTERNATIONAL PRODUCT PRICES OF BASKET USED IN BASIC FUEL PRICE



BASIC FUEL PRICE IN SA CENTS PER LITRE

