

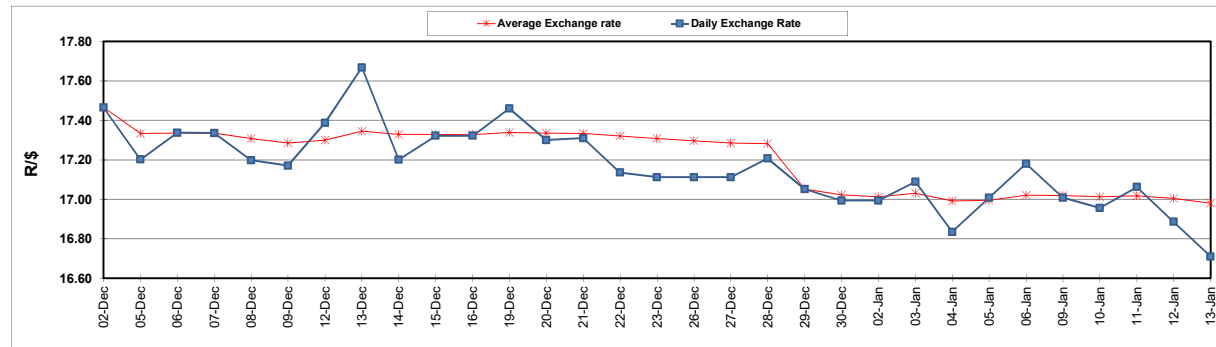
South African Cents per Litre (SA c/l)	PETROL 95 ULP	PETROL 93 ULP & LRP	DIESEL 0.05%	DIESEL 0.005%	ILL. PAR.
GAUTENG PUMP PRICE AS FROM 04/01/2015	2,140.000	2,110.000	-	-	-
WHOLESALE PRICE AS FROM 04/01/2015	-	-	2,122.870	2,141.270	1,525.958
SINGLE NATIONAL MAXIMUM RETAIL PRICE	-	-	-	-	2,009.000
BASIC FUEL PRICE - 13/01/2023	1,130.919	1,110.288	1,351.774	1,359.186	1,378.641
PRESS RELEASE CONTRIBUTION TO BFP 04/01/2023 - 13/01/2023	1,050.390	1,020.390	1,261.630	1,280.030	1,307.128
UNIT OVER/(UNDER) RECOVERY - 13/01/2023	(80.529)	(89.898)	(90.144)	(79.156)	(71.513)
AVERAGE BASIC FUEL PRICE 29/12/2022 - 13/01/2023	1,086.930	1,063.993	1,293.583	1,303.122	1,325.940
AVERAGE UNIT OVER/(UNDER) RECOVERY 29/12/2022 - 13/01/2023	24.827	17.763	50.381	63.242	45.521

### ANALYSIS MOVEMENT OF AVERAGE OVER/(UNDER) RECOVERY

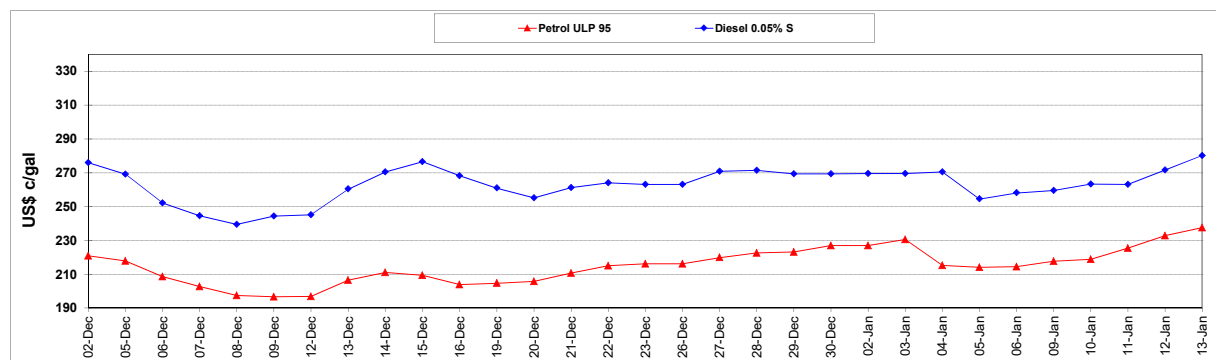
	PETROL 95	PETROL 93	DIESEL 0.05%	DIESEL 0.005%	ILL. PAR.
- MOVEMENT IN INTERNATIONAL PRODUCT PRICES	10.348	3.590	33.148	45.882	27.858
- MOVEMENT IN EXCHANGE RATE	14.479	14.174	17.232	17.359	17.663
AVERAGE UNIT OVER/(UNDER) RECOVERY 29/12/2022 - 13/01/2023	24.827	17.763	50.381	63.242	45.521

### R/\$ EXCHANGE RATE - (R/\$16.7100 - 13/01/2023)

#### EXCHANGE RATE USED IN BASIC FUEL PRICE



#### INTERNATIONAL PRODUCT PRICES OF BASKET USED IN BASIC FUEL PRICE



#### BASIC FUEL PRICE IN SA CENTS PER LITRE

