

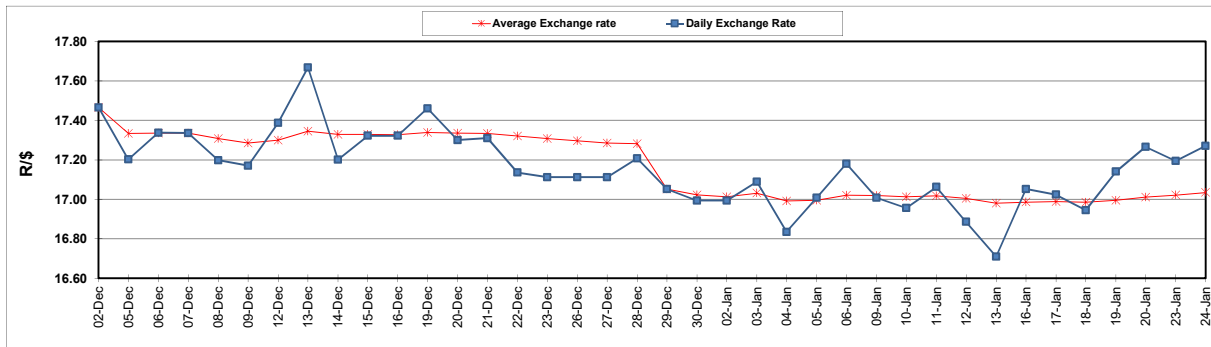
South African Cents per Litre (SA c/l)	PETROL 95 ULP	PETROL 93 ULP & LRP	DIESEL 0.05%	DIESEL 0.005%	ILL. PAR.
GAUTENG PUMP PRICE AS FROM 04/01/2023	2,140.000	2,110.000	-	-	-
WHOLESALE PRICE AS FROM 04/01/2023	-	-	2,122.870	2,141.270	1,525.958
SINGLE NATIONAL MAXIMUM RETAIL PRICE	-	-	-	-	2,009.000
BASIC FUEL PRICE - 24/01/2023	1,253.552	1,225.233	1,443.036	1,462.091	1,513.221
PRESS RELEASE CONTRIBUTION TO BFP 04/01/2023 - 24/01/2023	1,050.390	1,020.390	1,261.630	1,280.030	1,307.128
UNIT OVER/(UNDER) RECOVERY - 24/01/2023	(203.162)	(204.843)	(181.406)	(182.061)	(206.093)
AVERAGE BASIC FUEL PRICE 29/12/2022 - 24/01/2023	1,133.733	1,109.735	1,339.169	1,349.052	1,377.723
AVERAGE UNIT OVER/(UNDER) RECOVERY 29/12/2022 - 24/01/2023	(44.585)	(50.587)	(25.539)	(14.495)	(29.964)

### ANALYSIS MOVEMENT OF AVERAGE OVER/(UNDER) RECOVERY

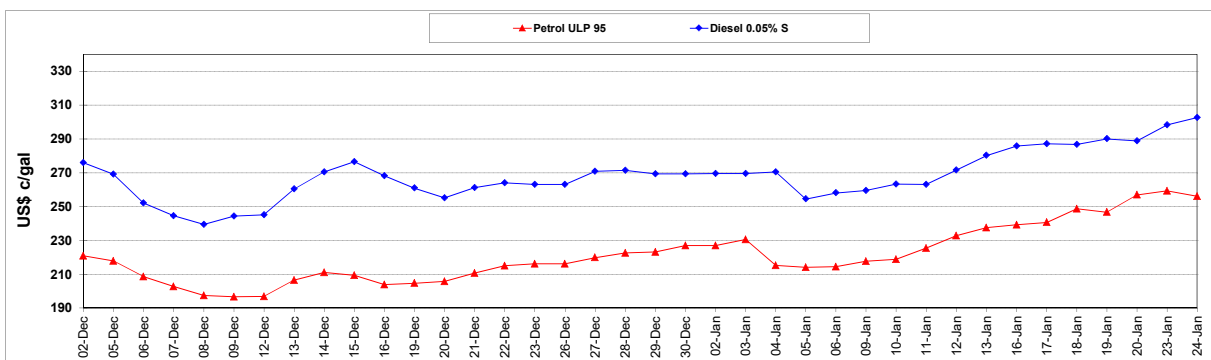
	PETROL 95	PETROL 93	DIESEL 0.05%	DIESEL 0.005%	ILL. PAR.
- MOVEMENT IN INTERNATIONAL PRODUCT PRICES	(56.052)	(61.812)	(39.084)	(28.141)	(43.898)
- MOVEMENT IN EXCHANGE RATE	11.467	11.225	13.545	13.645	13.935
AVERAGE UNIT OVER/(UNDER) RECOVERY 29/12/2022 - 24/01/2023	(44.585)	(50.587)	(25.539)	(14.495)	(29.964)

### R/\$ EXCHANGE RATE - (R/\$17.2700- 24/01/2023)

#### EXCHANGE RATE USED IN BASIC FUEL PRICE



#### INTERNATIONAL PRODUCT PRICES OF BASKET USED IN BASIC FUEL PRICE



#### BASIC FUEL PRICE IN SA CENTS PER LITRE

