

South African Cents per Litre (SA c/l)	PETROL 95 ULP	PETROL 93 ULP & LRP	DIESEL 0.05%	DIESEL 0.005%	ILL. PAR.
GAUTENG PUMP PRICE AS FROM 04/01/2023	2,140.000	2,110.000	-	-	-
WHOLESALE PRICE AS FROM 04/01/2023	-	-	2,122.870	2,141.270	1,525.958
SINGLE NATIONAL MAXIMUM RETAIL PRICE	-	-	-	-	2,009.000
BASIC FUEL PRICE - 26/01/2023	1,239.659	1,211.676	1,415.189	1,432.292	1,496.251
PRESS RELEASE CONTRIBUTION TO BFP 04/01/2023 - 26/01/2023	1,050.390	1,020.390	1,261.630	1,280.030	1,307.128
UNIT OVER/(UNDER) RECOVERY - 26/01/2023	(189.269)	(191.286)	(153.559)	(152.262)	(189.123)
AVERAGE BASIC FUEL PRICE 29/12/2022 - 26/01/2023	1,156.953	1,132.561	1,361.288	1,371.899	1,402.736
AVERAGE UNIT OVER/(UNDER) RECOVERY 29/12/2022 - 26/01/2023	(71.496)	(77.104)	(52.610)	(42.536)	(58.846)

ANALYSIS MOVEMENT OF AVERAGE OVER/(UNDER) RECOVERY

- MOVEMENT IN INTERNATIONAL PRODUCT PRICES

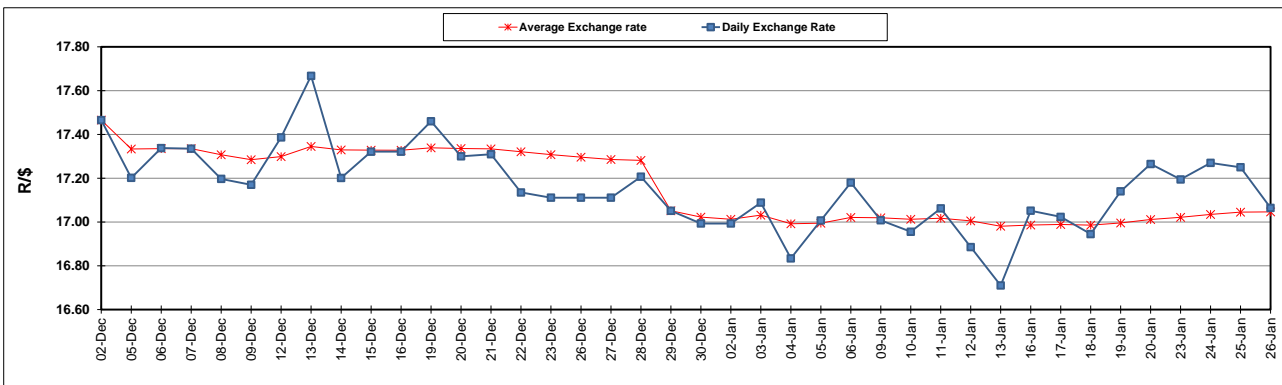
- MOVEMENT IN EXCHANGE RATE

AVERAGE UNIT OVER/(UNDER) RECOVERY 29/12/2022 - 26/01/2023

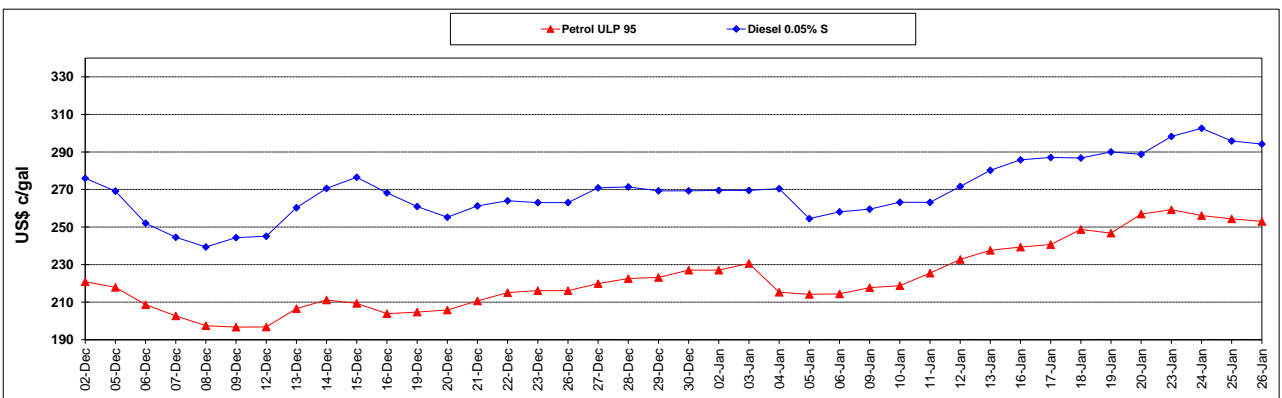
PETROL 95	PETROL 93	DIESEL 0.05%	DIESEL 0.005%	ILL. PAR.
(87.466)	(92.737)	(71.401)	(61.473)	(78.209)
15.970	15.633	18.791	18.937	19.363
(71.496)	(77.104)	(52.610)	(42.536)	(58.846)

R/\$ EXCHANGE RATE - (R/\$17.0645- 26/01/2023)

EXCHANGE RATE USED IN BASIC FUEL PRICE



INTERNATIONAL PRODUCT PRICES OF BASKET USED IN BASIC FUEL PRICE



BASIC FUEL PRICE IN SA CENTS PER LITRE

