

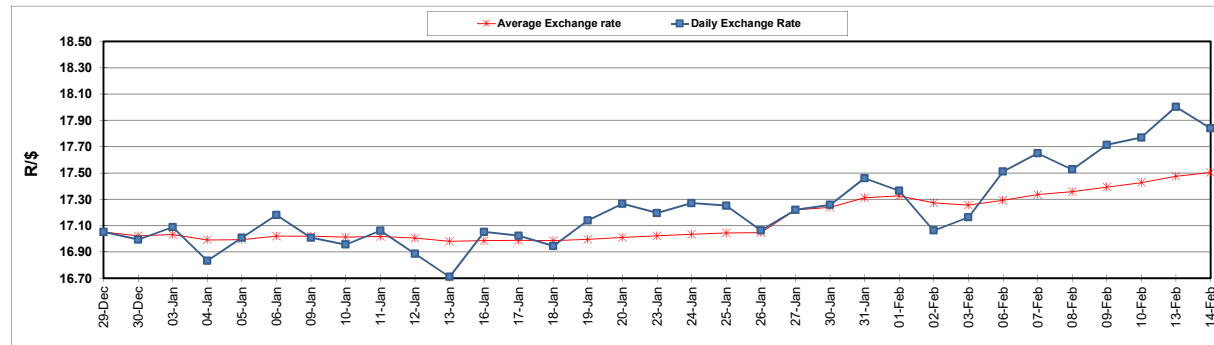
South African Cents per Litre (SA c/l)	PETROL 95 ULP	PETROL 93 ULP & LRP	DIESEL 0.05%	DIESEL 0.005%	ILL. PAR.
GAUTENG PUMP PRICE AS FROM 01/02/2023	2,168.000	2,138.000	-	-	-
WHOLESALE PRICE AS FROM 01/02/2023	-	-	2,132.030	2,140.430	1,583.958
SINGLE NATIONAL MAXIMUM RETAIL PRICE	-	-	-	-	2,087.000
BASIC FUEL PRICE - 14/02/2023	1,260.911	1,234.952	1,361.840	1,370.728	1,378.674
PRESS RELEASE CONTRIBUTION TO BFP 01/02/2023 - 14/02/2023	1,122.230	1,092.230	1,314.630	1,323.030	1,365.128
UNIT OVER/(UNDER) RECOVERY - 14/02/2023	(138.681)	(142.722)	(47.210)	(47.698)	(13.546)
AVERAGE BASIC FUEL PRICE 27/01/2023 - 14/02/2023	1,225.746	1,201.357	1,339.572	1,350.900	1,392.399
AVERAGE UNIT OVER/(UNDER) RECOVERY 27/01/2023 - 14/02/2023	(120.094)	(125.706)	(37.173)	(37.793)	(40.656)

ANALYSIS MOVEMENT OF AVERAGE OVER/(UNDER) RECOVERY

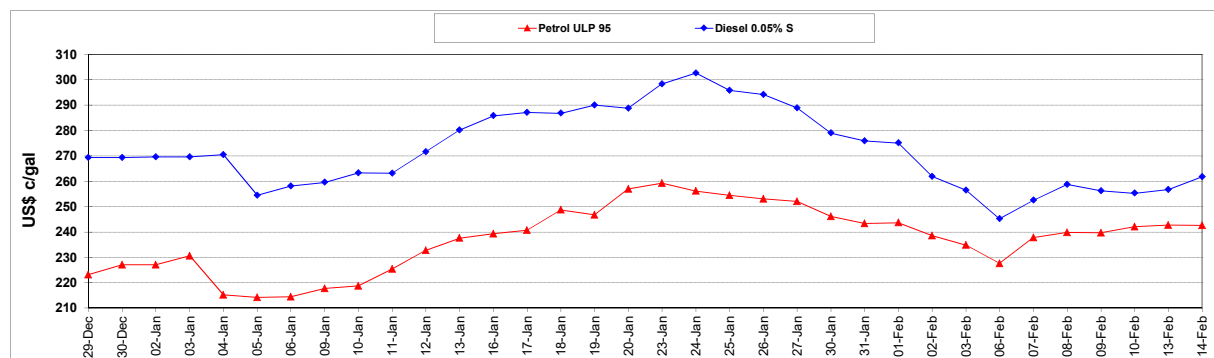
	PETROL 95	PETROL 93	DIESEL 0.05%	DIESEL 0.005%	ILL. PAR.
- MOVEMENT IN INTERNATIONAL PRODUCT PRICES	(88.097)	(94.345)	(2.205)	(2.529)	(4.309)
- MOVEMENT IN EXCHANGE RATE	(31.997)	(31.360)	(34.968)	(35.264)	(36.347)
AVERAGE UNIT OVER/(UNDER) RECOVERY 27/01/2023 - 14/02/2023	(120.094)	(125.706)	(37.173)	(37.793)	(40.656)

R/\$ EXCHANGE RATE - (R/\$17.8400 - 14/02/2023)

EXCHANGE RATE USED IN BASIC FUEL PRICE



INTERNATIONAL PRODUCT PRICES OF BASKET USED IN BASIC FUEL PRICE



BASIC FUEL PRICE IN SA CENTS PER LITRE

