

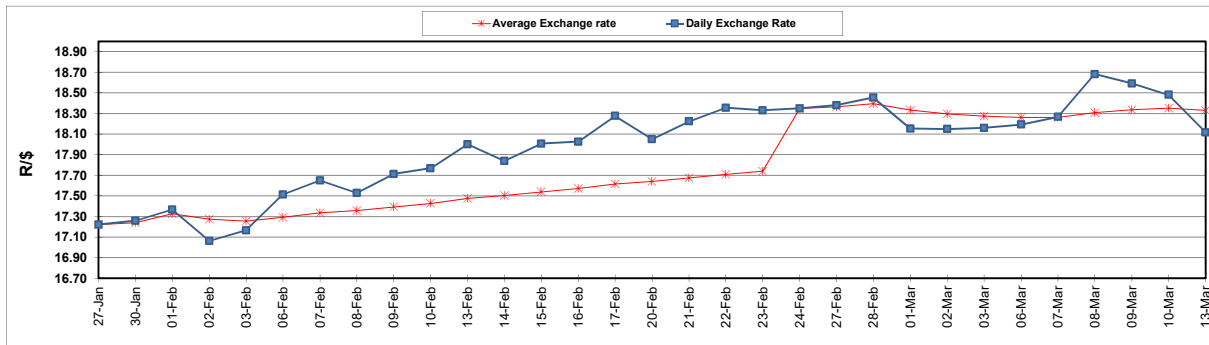
South African Cents per Litre (SA c/l)	PETROL 95 ULP	PETROL 93 ULP & LRP	DIESEL 0.05%	DIESEL 0.005%	ILL. PAR.
GAUTENG PUMP PRICE AS FROM 01/03/2023	2,295.000	2,265.000	-	-	-
WHOLESALE PRICE AS FROM 01/03/2023	-	-	2,162.410	2,171.810	1,596.958
SINGLE NATIONAL MAXIMUM RETAIL PRICE	-	-	-	-	2,104.000
BASIC FUEL PRICE - 13/03/2023	1,217.837	1,185.196	1,265.164	1,272.890	1,235.966
PRESS RELEASE CONTRIBUTION TO BFP 01/03/2023 - 13/03/2023	1,244.850	1,214.850	1,340.630	1,350.030	1,378.128
UNIT OVER/(UNDER) RECOVERY - 13/03/2023	27.013	29.654	75.466	77.140	142.162
AVERAGE BASIC FUEL PRICE 24/02/2023 - 13/03/2023	1,244.236	1,214.120	1,319.237	1,327.025	1,314.029
AVERAGE UNIT OVER/(UNDER) RECOVERY 24/02/2023 - 13/03/2023	(30.041)	(29.925)	14.894	16.255	60.849

ANALYSIS MOVEMENT OF AVERAGE OVER/(UNDER) RECOVERY

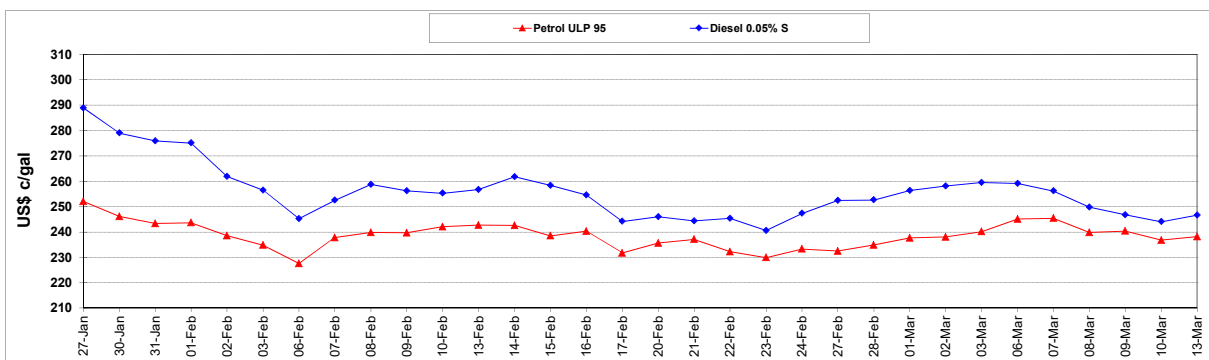
	PETROL 95	PETROL 93	DIESEL 0.05%	DIESEL 0.005%	ILL. PAR.
- MOVEMENT IN INTERNATIONAL PRODUCT PRICES	10.034	9.180	57.384	58.996	103.172
- MOVEMENT IN EXCHANGE RATE	(40.075)	(39.105)	(42.491)	(42.741)	(42.323)
AVERAGE UNIT OVER/(UNDER) RECOVERY 24/02/2023 - 13/03/2023	(30.041)	(29.925)	14.894	16.255	60.849

R/\$ EXCHANGE RATE - (R/\$18.1163 - 13/03/2023)

EXCHANGE RATE USED IN BASIC FUEL PRICE



INTERNATIONAL PRODUCT PRICES OF BASKET USED IN BASIC FUEL PRICE



BASIC FUEL PRICE IN SA CENTS PER LITRE

