

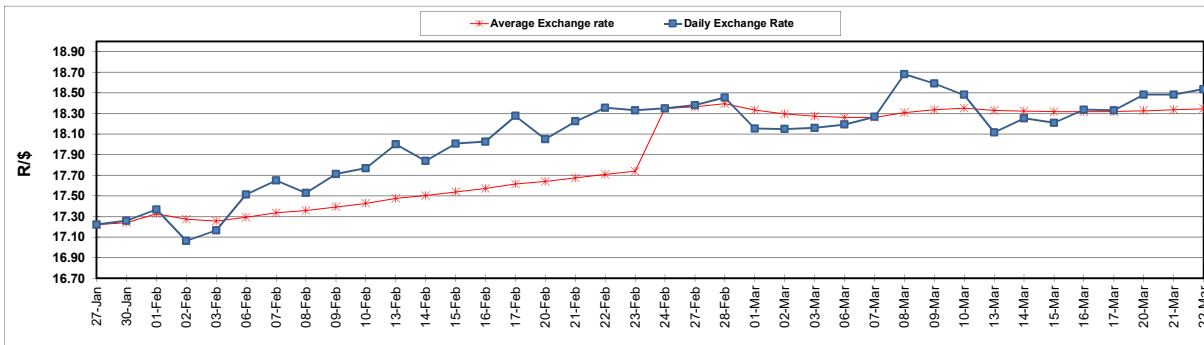
South African Cents per Litre (SA c/l)	PETROL 95 ULP	PETROL 93 ULP & LRP	DIESEL 0.05%	DIESEL 0.005%	ILL. PAR.
GAUTENG PUMP PRICE AS FROM 01/03/2123	2,295.000	2,265.000	-	-	-
WHOLESALE PRICE AS FROM 01/03/2123	-	-	2,162.410	2,171.810	1,596.958
SINGLE NATIONAL MAXIMUM RETAIL PRICE	-	-	-	-	2,104.000
BASIC FUEL PRICE - 22/03/2023	1,228.811	1,195.433	1,227.971	1,237.898	1,180.963
PRESS RELEASE CONTRIBUTION TO BFP 01/03/2023 - 22/03/2023	1,244.850	1,214.850	1,340.630	1,350.030	1,378.128
UNIT OVER/(UNDER) RECOVERY - 22/03/2023	16.039	19.417	112.659	112.132	197.165
AVERAGE BASIC FUEL PRICE 24/02/2023 - 22/03/2023	1,226.327	1,195.117	1,280.671	1,289.005	1,262.110
AVERAGE UNIT OVER/(UNDER) RECOVERY 24/02/2023 - 22/03/2023	(0.838)	0.372	55.853	56.762	113.965

ANALYSIS MOVEMENT OF AVERAGE OVER/(UNDER) RECOVERY

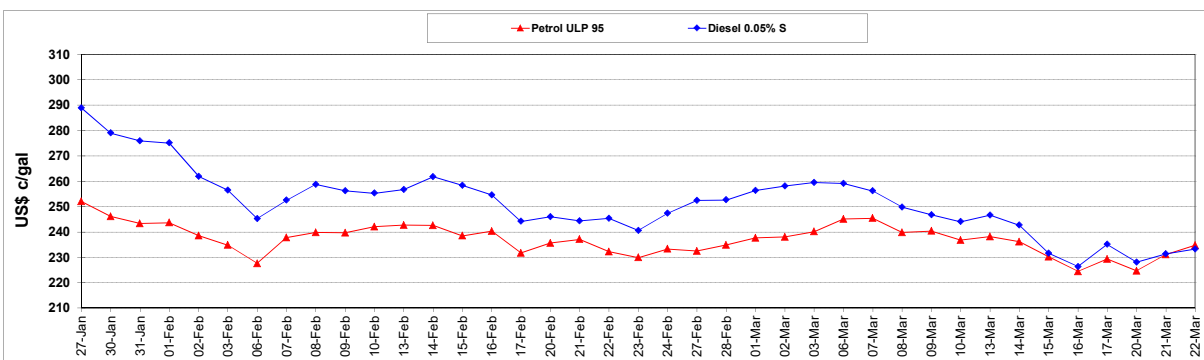
	PETROL 95	PETROL 93	DIESEL 0.05%	DIESEL 0.005%	ILL. PAR.
- MOVEMENT IN INTERNATIONAL PRODUCT PRICES	39.714	39.892	98.204	99.387	155.701
- MOVEMENT IN EXCHANGE RATE	(40.552)	(39.520)	(42.350)	(42.625)	(41.736)
AVERAGE UNIT OVER/(UNDER) RECOVERY 24/02/2023 - 22/03/2023	(0.838)	0.372	55.853	56.762	113.965

R/\$ EXCHANGE RATE - (R/\$18.5350 - 22/03/2023)

EXCHANGE RATE USED IN BASIC FUEL PRICE



INTERNATIONAL PRODUCT PRICES OF BASKET USED IN BASIC FUEL PRICE



BASIC FUEL PRICE IN SA CENTS PER LITRE

