

South African Cents per Litre (SA c/l)	PETROL 95 ULP	PETROL 93 ULP & LRP	DIESEL 0.05%	DIESEL 0.005%	ILL. PAR.
GAUTENG PUMP PRICE AS FROM 05/04/2023	2,297.000	2,264.000	-	-	-
WHOLESALE PRICE AS FROM 05/04/2023	-	-	2,088.830	2,097.230	1,472.058
SINGLE NATIONAL MAXIMUM RETAIL PRICE	-	-	-	-	1,903.000
BASIC FUEL PRICE - 05/04/2023	1,301.178	1,283.015	1,245.633	1,262.767	1,230.782
PRESS RELEASE CONTRIBUTION TO BFP 05/04/2023 - 05/04/2023	1,243.430	1,210.430	1,263.630	1,272.030	1,239.128
UNIT OVER/(UNDER) RECOVERY - 05/04/2023	(57.748)	(72.585)	17.997	9.263	8.346
AVERAGE BASIC FUEL PRICE 31/03/2023 - 05/04/2023	1,278.248	1,255.873	1,223.360	1,239.275	1,198.821
AVERAGE UNIT OVER/(UNDER) RECOVERY 31/03/2023 - 05/04/2023	(33.753)	(42.128)	98.020	91.255	144.557

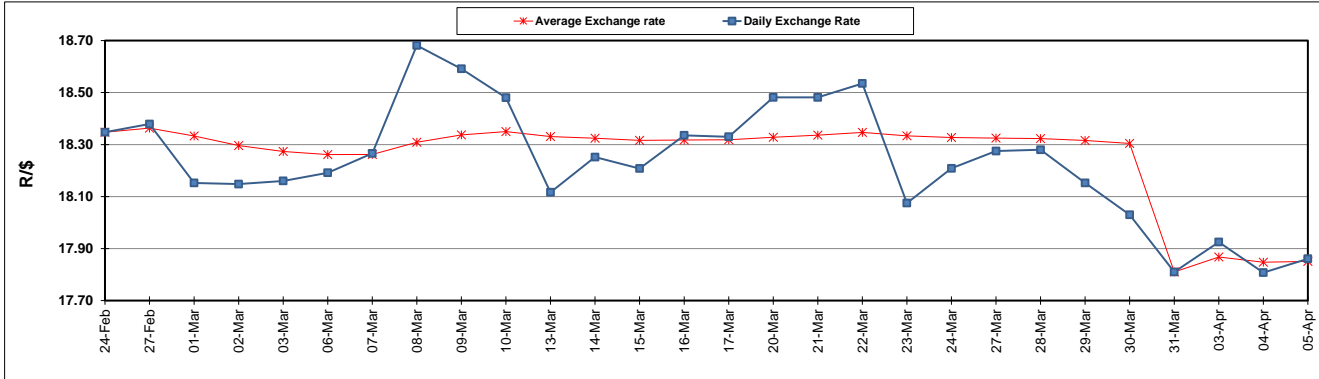
ANALYSIS MOVEMENT OF AVERAGE OVER/(UNDER) RECOVERY

- MOVEMENT IN INTERNATIONAL PRODUCT PRICES
- MOVEMENT IN EXCHANGE RATE
- AVERAGE UNIT OVER/(UNDER) RECOVERY 31/03/2023 - 05/04/2023

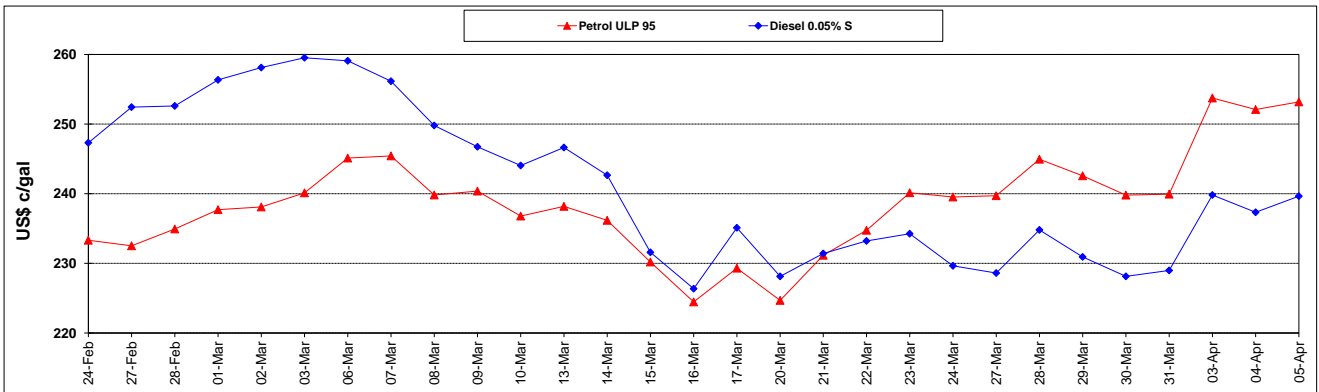
PETROL 95	PETROL 93	DIESEL 0.05%	DIESEL 0.005%	ILL. PAR.
(66.241)	(74.048)	66.927	59.757	114.087
32.488	31.920	31.093	31.498	30.470
(33.753)	(42.128)	98.020	91.255	144.557

R/\$ EXCHANGE RATE - (R/\$17.8608 - 05/04/2023)

EXCHANGE RATE USED IN BASIC FUEL PRICE



INTERNATIONAL PRODUCT PRICES OF BASKET USED IN BASIC FUEL PRICE



BASIC FUEL PRICE IN SA CENTS PER LITRE

