

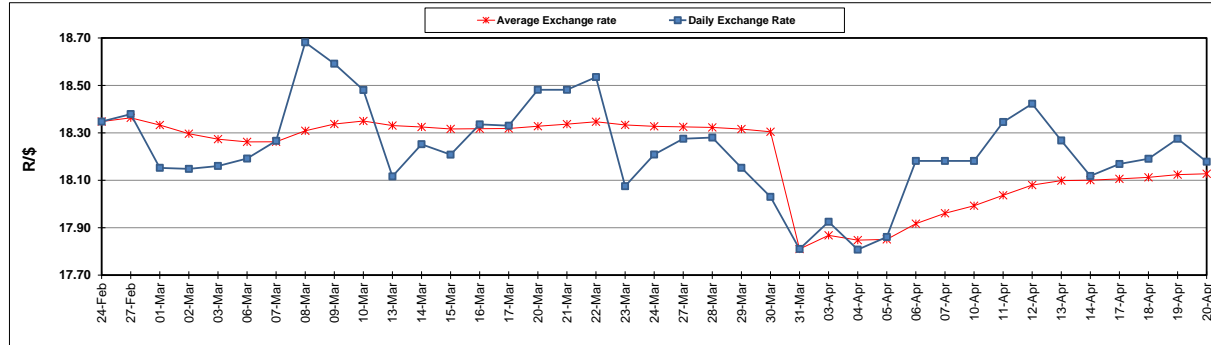
South African Cents per Litre (SA c/l)	PETROL 95 ULP	PETROL 93 ULP & LRP	DIESEL 0.05%	DIESEL 0.005%	ILL. PAR.
GAUTENG PUMP PRICE AS FROM 05/04/2023	2,297.000	2,264.000	-	-	-
WHOLESALE PRICE AS FROM 05/04/2023	-	-	2,088.830	2,097.230	1,472.058
SINGLE NATIONAL MAXIMUM RETAIL PRICE	-	-	-	-	1,903.000
BASIC FUEL PRICE - 20/04/2023	1,227.112	1,191.775	1,158.273	1,202.742	1,188.820
PRESS RELEASE CONTRIBUTION TO BFP 05/04/2023 - 20/04/2023	1,243.430	1,210.430	1,263.630	1,272.030	1,239.128
UNIT OVER/(UNDER) RECOVERY - 20/04/2023	16.318	18.655	105.357	69.288	50.308
AVERAGE BASIC FUEL PRICE 31/03/2023 - 20/04/2023	1,309.082	1,281.688	1,232.138	1,265.249	1,237.158
AVERAGE UNIT OVER/(UNDER) RECOVERY 31/03/2023 - 20/04/2023	(65.368)	(70.374)	46.892	22.381	29.770

ANALYSIS MOVEMENT OF AVERAGE OVER/(UNDER) RECOVERY

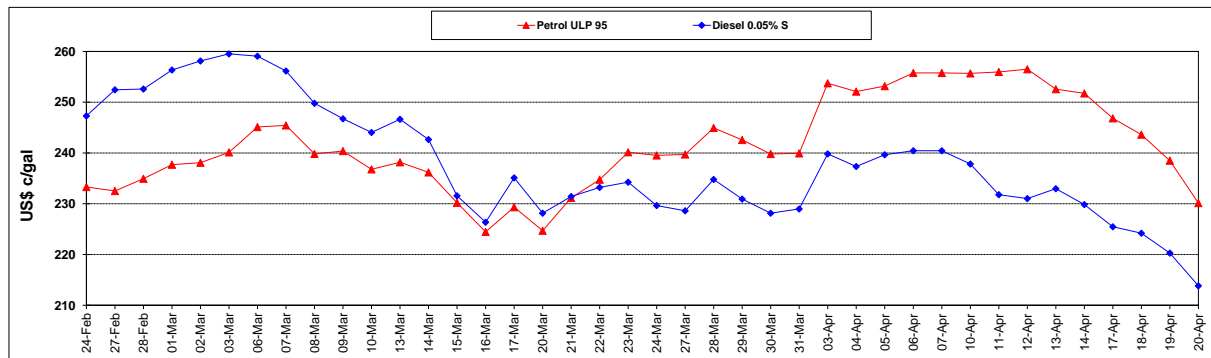
	PETROL 95	PETROL 93	DIESEL 0.05%	DIESEL 0.005%	ILL. PAR.
- MOVEMENT IN INTERNATIONAL PRODUCT PRICES	(78.150)	(82.889)	34.861	10.027	17.690
- MOVEMENT IN EXCHANGE RATE	12.782	12.515	12.031	12.354	12.080
AVERAGE UNIT OVER/(UNDER) RECOVERY 31/03/2023 - 20/04/2023	(65.368)	(70.374)	46.892	22.381	29.770

R/\$ EXCHANGE RATE - (R/\$18.1783 - 20/04/2023)

EXCHANGE RATE USED IN BASIC FUEL PRICE



INTERNATIONAL PRODUCT PRICES OF BASKET USED IN BASIC FUEL PRICE



BASIC FUEL PRICE IN SA CENTS PER LITRE

