

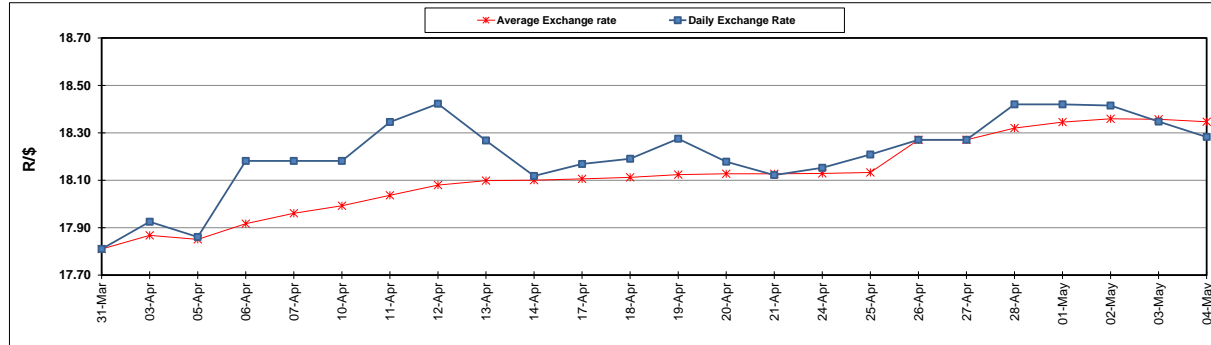
South African Cents per Litre (SA c/l)	PETROL 95 ULP	PETROL 93 ULP & LRP	DIESEL 0.05%	DIESEL 0.005%	ILL. PAR.
GAUTENG PUMP PRICE AS FROM 03/05/2023	2,334.000	2,301.000	-	-	-
WHOLESALE PRICE AS FROM 03/05/2023	-	-	2,015.290	2,049.690	1,439.058
SINGLE NATIONAL MAXIMUM RETAIL PRICE	-	-	-	-	1,859.000
BASIC FUEL PRICE - 04/05/2023	1,083.002	1,056.076	1,011.707	1,040.760	1,068.326
PRESS RELEASE CONTRIBUTION TO BFP 03/05/2023 - 04/05/2023	1,295.970	1,262.970	1,205.630	1,240.030	1,206.128
UNIT OVER/(UNDER) RECOVERY - 04/05/2023	212.968	206.894	193.923	199.270	137.802
AVERAGE BASIC FUEL PRICE 26/04/2023 - 04/05/2023	1,161.149	1,133.475	1,073.453	1,110.207	1,125.203
AVERAGE UNIT OVER/(UNDER) RECOVERY 26/04/2023 - 04/05/2023	97.292	91.966	173.606	152.680	104.496

ANALYSIS MOVEMENT OF AVERAGE OVER/(UNDER) RECOVERY

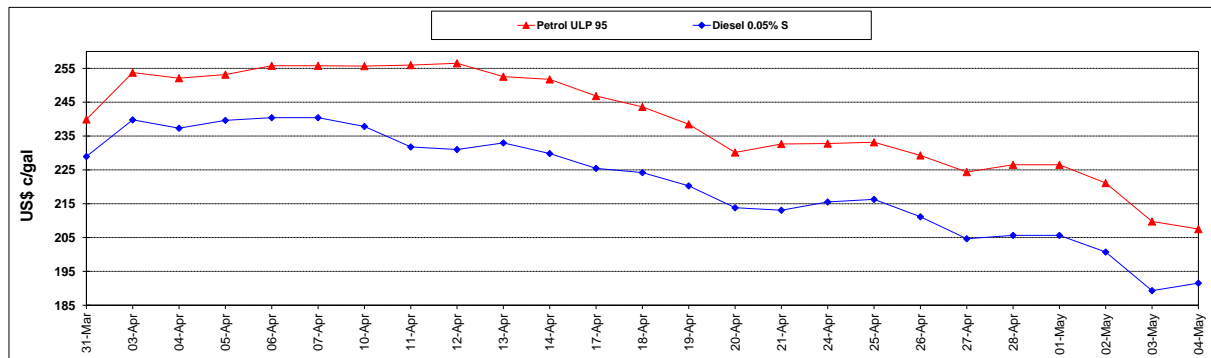
	PETROL 95	PETROL 93	DIESEL 0.05%	DIESEL 0.005%	ILL. PAR.
- MOVEMENT IN INTERNATIONAL PRODUCT PRICES	110.804	105.156	186.098	165.600	117.590
- MOVEMENT IN EXCHANGE RATE	(13.512)	(13.190)	(12.492)	(12.920)	(13.094)
AVERAGE UNIT OVER/(UNDER) RECOVERY 26/04/2023 - 04/05/2023	97.292	91.966	173.606	152.680	104.496

R/\$ EXCHANGE RATE - (R/\$18.2825 - 04/05/2023)

EXCHANGE RATE USED IN BASIC FUEL PRICE



INTERNATIONAL PRODUCT PRICES OF BASKET USED IN BASIC FUEL PRICE



BASIC FUEL PRICE IN SA CENTS PER LITRE

