

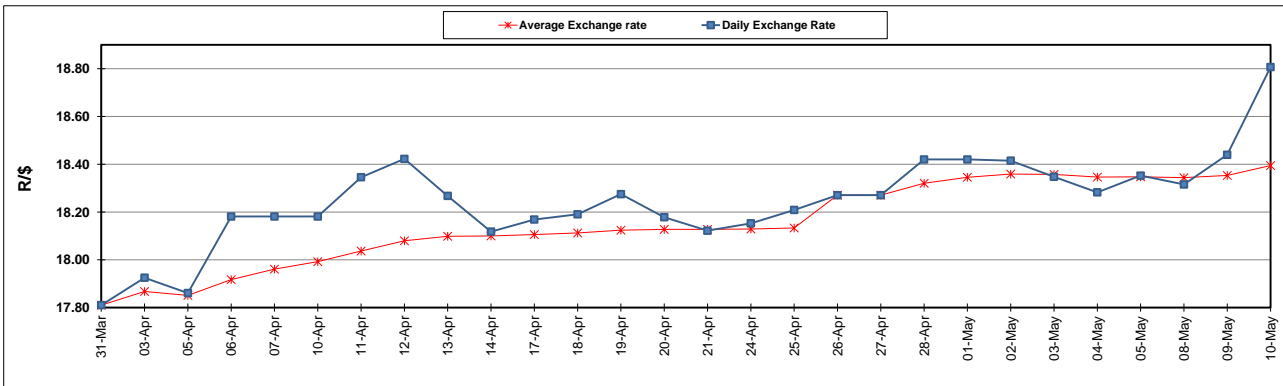
South African Cents per Litre (SA c/l)	PETROL 95 ULP	PETROL 93 ULP & LRP	DIESEL 0.05%	DIESEL 0.005%	ILL. PAR.
GAUTENG PUMP PRICE AS FROM 03/05/2023	2,334.000	2,301.000	-	-	-
WHOLESALE PRICE AS FROM 03/05/2023	-	-	2,015.290	2,049.690	1,439.058
SINGLE NATIONAL MAXIMUM RETAIL PRICE	-	-	-	-	1,859.000
BASIC FUEL PRICE - 10/05/2023	1,185.877	1,149.564	1,120.978	1,151.948	1,166.216
PRESS RELEASE CONTRIBUTION TO BFP 03/05/2023 - 10/05/2023	1,295.970	1,262.970	1,205.630	1,240.030	1,206.128
UNIT OVER/(UNDER) RECOVERY - 10/05/2023	110.093	113.406	84.652	88.082	39.912
AVERAGE BASIC FUEL PRICE 26/04/2023 - 10/05/2023	1,151.543	1,120.998	1,072.749	1,106.911	1,123.891
AVERAGE UNIT OVER/(UNDER) RECOVERY 26/04/2023 - 10/05/2023	120.545	118.090	159.245	147.664	97.237

ANALYSIS MOVEMENT OF AVERAGE OVER/(UNDER) RECOVERY

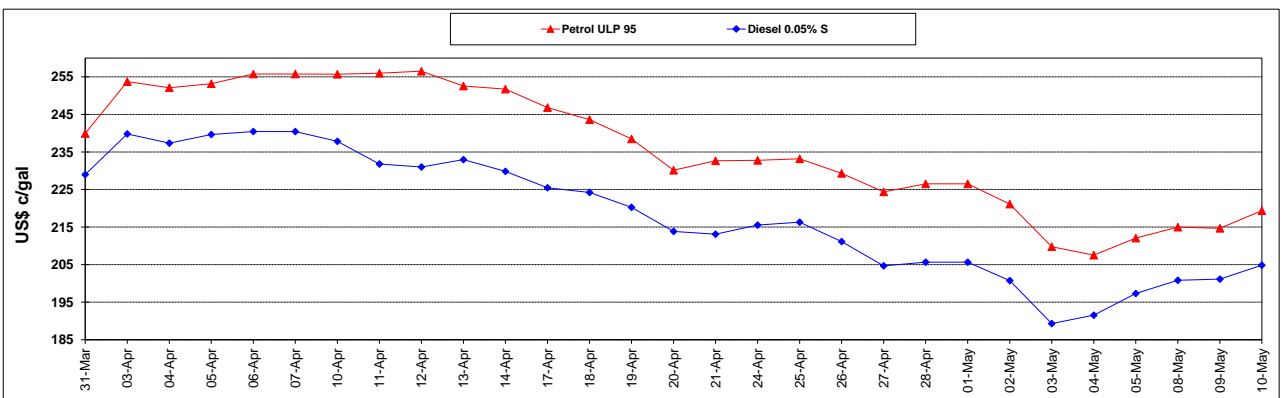
	PETROL 95	PETROL 93	DIESEL 0.05%	DIESEL 0.005%	ILL. PAR.
- MOVEMENT IN INTERNATIONAL PRODUCT PRICES	136.915	134.026	174.495	163.400	113.214
- MOVEMENT IN EXCHANGE RATE	(16.370)	(15.936)	(15.250)	(15.736)	(15.977)
AVERAGE UNIT OVER/(UNDER) RECOVERY 26/04/2023 - 10/05/2023	120.545	118.090	159.245	147.664	97.237

R/\$ EXCHANGE RATE - (R/\$18.8070 - 10/05/2023)

EXCHANGE RATE USED IN BASIC FUEL PRICE



INTERNATIONAL PRODUCT PRICES OF BASKET USED IN BASIC FUEL PRICE



BASIC FUEL PRICE IN SA CENTS PER LITRE

