

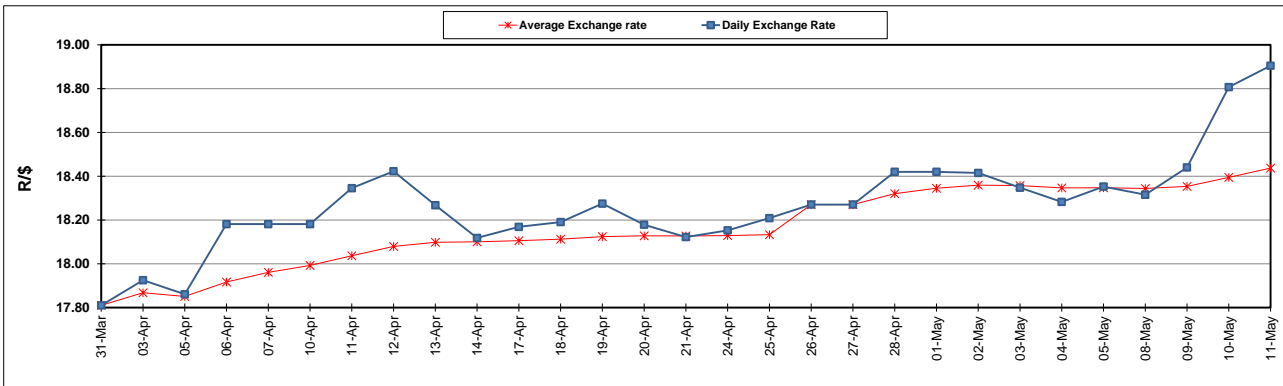
South African Cents per Litre (SA c/l)	PETROL 95 ULP	PETROL 93 ULP & LRP	DIESEL 0.05%	DIESEL 0.005%	ILL. PAR.
GAUTENG PUMP PRICE AS FROM 03/05/2023	2,334.000	2,301.000	-	-	-
WHOLESALE PRICE AS FROM 03/05/2023	-	-	2,015.290	2,049.690	1,439.058
SINGLE NATIONAL MAXIMUM RETAIL PRICE	-	-	-	-	1,859.000
BASIC FUEL PRICE - 11/05/2023	1,204.140	1,168.175	1,146.461	1,177.953	1,190.135
PRESS RELEASE CONTRIBUTION TO BFP 03/05/2023 - 11/05/2023	1,295.970	1,262.970	1,205.630	1,240.030	1,206.128
UNIT OVER/(UNDER) RECOVERY - 11/05/2023	91.830	94.795	59.169	62.077	15.993
AVERAGE BASIC FUEL PRICE 26/04/2023 - 11/05/2023	1,155.926	1,124.929	1,078.891	1,112.831	1,129.411
AVERAGE UNIT OVER/(UNDER) RECOVERY 26/04/2023 - 11/05/2023	118.152	116.149	150.906	140.532	90.467

ANALYSIS MOVEMENT OF AVERAGE OVER/(UNDER) RECOVERY

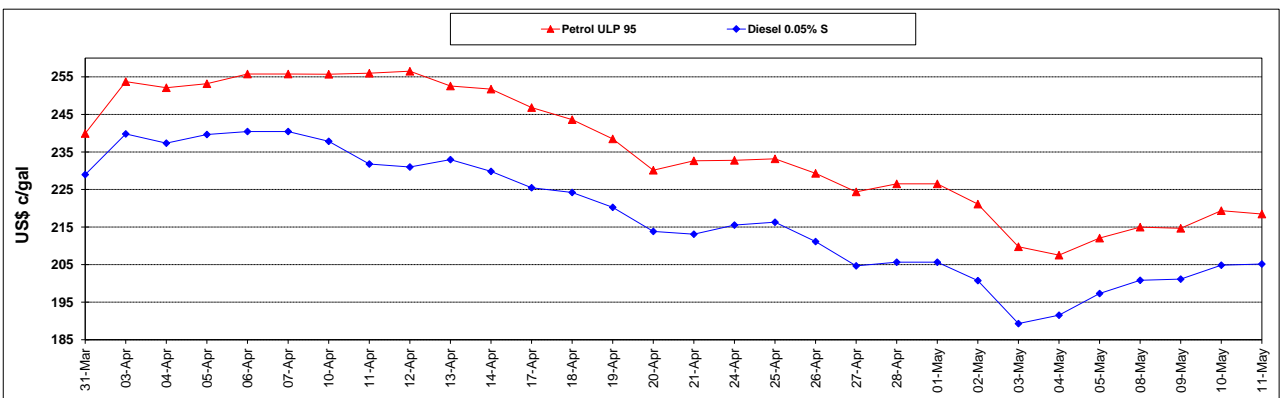
	PETROL 95	PETROL 93	DIESEL 0.05%	DIESEL 0.005%	ILL. PAR.
- MOVEMENT IN INTERNATIONAL PRODUCT PRICES	137.211	134.697	168.695	158.881	109.089
- MOVEMENT IN EXCHANGE RATE	(19.059)	(18.548)	(17.789)	(18.349)	(18.622)
AVERAGE UNIT OVER/(UNDER) RECOVERY 26/04/2023 - 11/05/2023	118.152	116.149	150.906	140.532	90.467

R/\$ EXCHANGE RATE - (R/\$18.9045 - 11/05/2023)

EXCHANGE RATE USED IN BASIC FUEL PRICE



INTERNATIONAL PRODUCT PRICES OF BASKET USED IN BASIC FUEL PRICE



BASIC FUEL PRICE IN SA CENTS PER LITRE

