

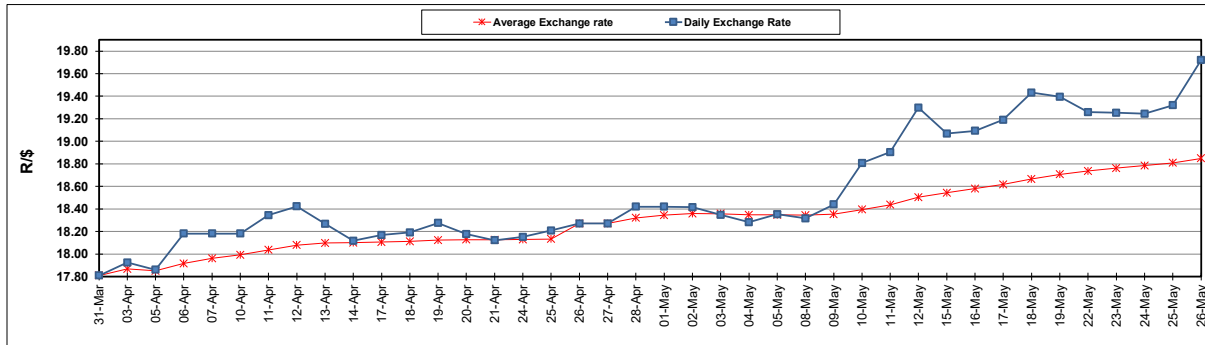
South African Cents per Litre (SA c/l)	PETROL 95 ULP	PETROL 93 ULP & LRP	DIESEL 0.05%	DIESEL 0.005%	ILL. PAR.
GAUTENG PUMP PRICE AS FROM 03/05/2023	2,334.000	2,301.000	-	-	-
WHOLESALE PRICE AS FROM 03/05/2023	-	-	2,015.290	2,049.690	1,439.058
SINGLE NATIONAL MAXIMUM RETAIL PRICE	-	-	-	-	1,859.000
BASIC FUEL PRICE - 26/05/2023	1,312.374	1,267.860	1,205.162	1,239.127	1,224.936
PRESS RELEASE CONTRIBUTION TO BFP 03/05/2023 - 26/05/2023	1,295.970	1,262.970	1,205.630	1,240.030	1,206.128
UNIT OVER/(UNDER) RECOVERY - 26/05/2023	(16.404)	(4.890)	0.468	0.903	(18.808)
AVERAGE BASIC FUEL PRICE 26/04/2023 - 26/05/2023	1,202.983	1,168.825	1,123.356	1,156.841	1,163.375
AVERAGE UNIT OVER/(UNDER) RECOVERY 26/04/2023 - 26/05/2023	81.565	82.723	94.883	90.146	49.927

ANALYSIS MOVEMENT OF AVERAGE OVER/(UNDER) RECOVERY

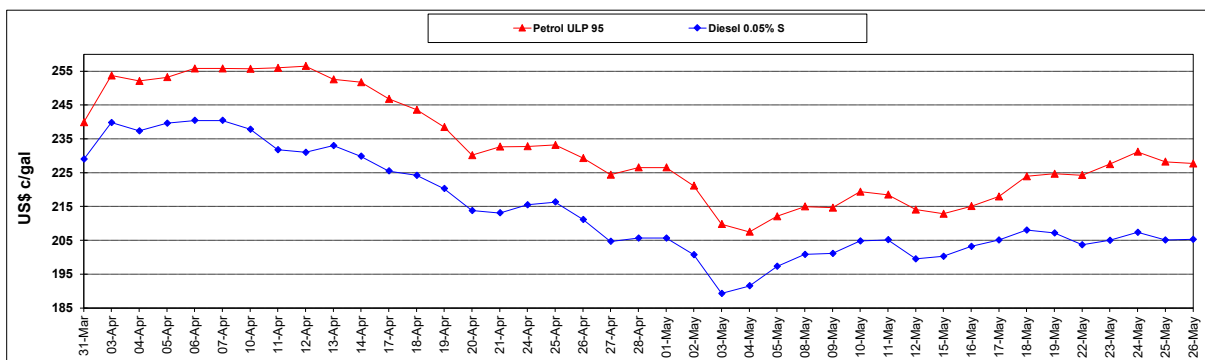
	PETROL 95	PETROL 93	DIESEL 0.05%	DIESEL 0.005%	ILL. PAR.
- MOVEMENT IN INTERNATIONAL PRODUCT PRICES	127.231	127.092	137.526	134.060	94.089
- MOVEMENT IN EXCHANGE RATE	(45.666)	(44.369)	(42.643)	(43.914)	(44.162)
AVERAGE UNIT OVER/(UNDER) RECOVERY 26/04/2023 - 26/05/2023	81.565	82.723	94.883	90.146	49.927

R/\$ EXCHANGE RATE - (R/\$19.7223 - 26/05/2023)

EXCHANGE RATE USED IN BASIC FUEL PRICE



INTERNATIONAL PRODUCT PRICES OF BASKET USED IN BASIC FUEL PRICE



BASIC FUEL PRICE IN SA CENTS PER LITRE

