

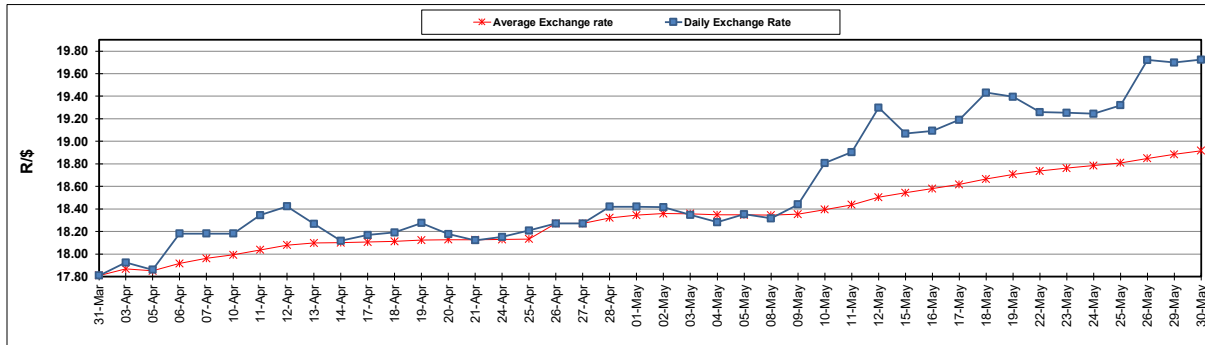
South African Cents per Litre (SA c/l)	PETROL 95 ULP	PETROL 93 ULP & LRP	DIESEL 0.05%	DIESEL 0.005%	ILL. PAR.
GAUTENG PUMP PRICE AS FROM 03/05/2023	2,334.000	2,301.000	-	-	-
WHOLESALE PRICE AS FROM 03/05/2023	-	-	2,015.290	2,049.690	1,439.058
SINGLE NATIONAL MAXIMUM RETAIL PRICE	-	-	-	-	1,859.000
BASIC FUEL PRICE - 30/05/2023	1,288.519	1,243.999	1,194.441	1,227.752	1,207.753
PRESS RELEASE CONTRIBUTION TO BFP 03/05/2023 - 30/05/2023	1,295.970	1,262.970	1,205.630	1,240.030	1,206.128
UNIT OVER/(UNDER) RECOVERY - 30/05/2023	7.451	18.971	11.189	12.278	(1.625)
AVERAGE BASIC FUEL PRICE 26/04/2023 - 30/05/2023	1,210.909	1,175.924	1,129.764	1,163.259	1,167.858
AVERAGE UNIT OVER/(UNDER) RECOVERY 26/04/2023 - 30/05/2023	74.553	76.538	87.466	83.171	44.870

ANALYSIS MOVEMENT OF AVERAGE OVER/(UNDER) RECOVERY

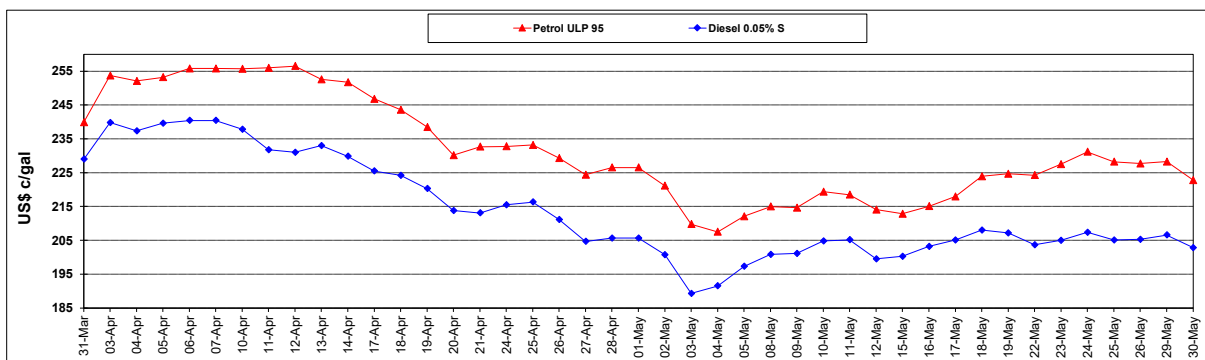
	PETROL 95	PETROL 93	DIESEL 0.05%	DIESEL 0.005%	ILL. PAR.
- MOVEMENT IN INTERNATIONAL PRODUCT PRICES	124.775	125.309	134.322	131.416	93.306
- MOVEMENT IN EXCHANGE RATE	(50.222)	(48.771)	(46.856)	(48.245)	(48.436)
AVERAGE UNIT OVER/(UNDER) RECOVERY 26/04/2023 - 30/05/2023	74.553	76.538	87.466	83.171	44.870

R/\$ EXCHANGE RATE - (R/\$19.7250 - 30/05/2023)

EXCHANGE RATE USED IN BASIC FUEL PRICE



INTERNATIONAL PRODUCT PRICES OF BASKET USED IN BASIC FUEL PRICE



BASIC FUEL PRICE IN SA CENTS PER LITRE

