

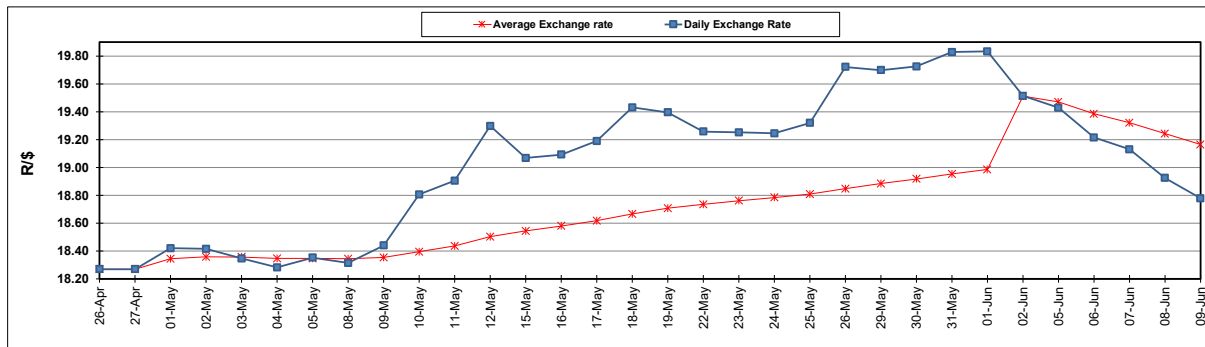
South African Cents per Litre (SA c/l)	PETROL 95 ULP	PETROL 93 ULP & LRP	DIESEL 0.05%	DIESEL 0.005%	ILL. PAR.
GAUTENG PUMP PRICE AS FROM 07/06/2023	2,263.000	2,230.000	-	-	-
WHOLESALE PRICE AS FROM 07/06/2023	-	-	1,931.290	1,969.690	1,396.058
SINGLE NATIONAL MAXIMUM RETAIL PRICE	-	-	-	-	1,801.000
BASIC FUEL PRICE - 09/06/2023	1,255.281	1,216.463	1,159.697	1,185.885	1,171.633
PRESS RELEASE CONTRIBUTION TO BFP 07/06/2023 - 09/06/2023	1,225.970	1,192.970	1,122.630	1,161.030	1,163.128
UNIT OVER/(UNDER) RECOVERY - 09/06/2023	(29.311)	(23.493)	(37.067)	(24.855)	(8.505)
AVERAGE BASIC FUEL PRICE 02/06/2023 - 09/06/2023	1,262.980	1,220.666	1,172.244	1,203.767	1,187.347
AVERAGE UNIT OVER/(UNDER) RECOVERY 02/06/2023 - 09/06/2023	(2.010)	7.304	(8.114)	(3.237)	(2.719)

ANALYSIS MOVEMENT OF AVERAGE OVER/(UNDER) RECOVERY

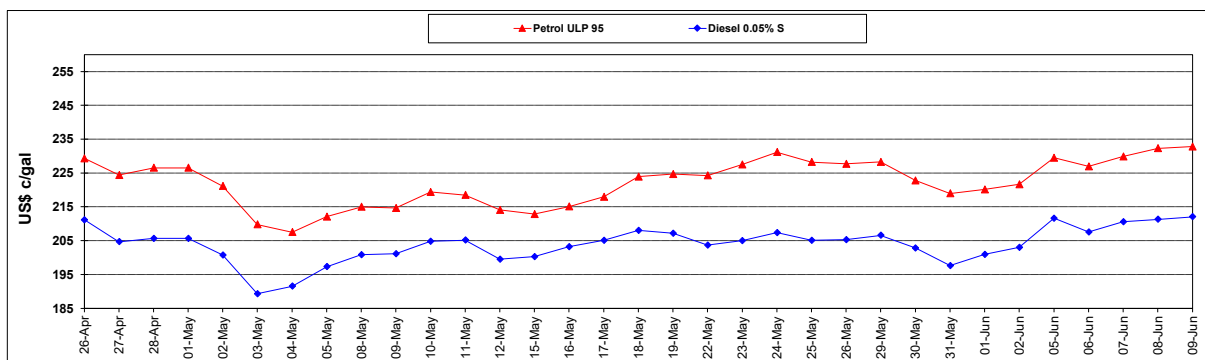
	PETROL 95	PETROL 93	DIESEL 0.05%	DIESEL 0.005%	ILL. PAR.
- MOVEMENT IN INTERNATIONAL PRODUCT PRICES	9.845	18.762	2.890	8.062	8.426
- MOVEMENT IN EXCHANGE RATE	(11.855)	(11.458)	(11.004)	(11.299)	(11.145)
AVERAGE UNIT OVER/(UNDER) RECOVERY 02/06/2023 - 09/06/2023	(2.010)	7.304	(8.114)	(3.237)	(2.719)

R/\$ EXCHANGE RATE - (R/\$18.7795 - 09/06/2023)

EXCHANGE RATE USED IN BASIC FUEL PRICE



INTERNATIONAL PRODUCT PRICES OF BASKET USED IN BASIC FUEL PRICE



BASIC FUEL PRICE IN SA CENTS PER LITRE

