

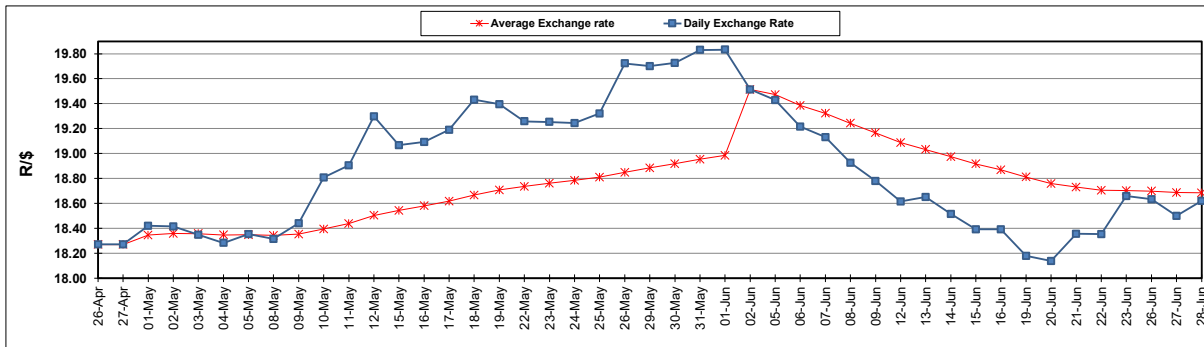
South African Cents per Litre (SA c/l)	PETROL 95 ULP	PETROL 93 ULP & LRP	DIESEL 0.05%	DIESEL 0.005%	ILL. PAR.
GAUTENG PUMP PRICE AS FROM 07/06/2023	2,263.000	2,230.000	-	-	-
WHOLESALE PRICE AS FROM 07/06/2023	-	-	1,931.290	1,969.690	1,396.058
SINGLE NATIONAL MAXIMUM RETAIL PRICE	-	-	-	-	1,801.000
BASIC FUEL PRICE - 28/06/2023	1,181.342	1,145.363	1,130.988	1,162.018	1,153.482
PRESS RELEASE CONTRIBUTION TO BFP 07/06/2023 - 28/06/2023	1,225.970	1,192.970	1,122.630	1,161.030	1,163.128
UNIT OVER/(UNDER) RECOVERY - 28/06/2023	44.628	47.607	(8.358)	(0.988)	9.646
AVERAGE BASIC FUEL PRICE 02/06/2023 - 28/06/2023	1,220.848	1,180.748	1,154.816	1,186.417	1,166.907
AVERAGE UNIT OVER/(UNDER) RECOVERY 02/06/2023 - 28/06/2023	16.175	23.275	(19.081)	(12.913)	3.010

ANALYSIS MOVEMENT OF AVERAGE OVER/(UNDER) RECOVERY

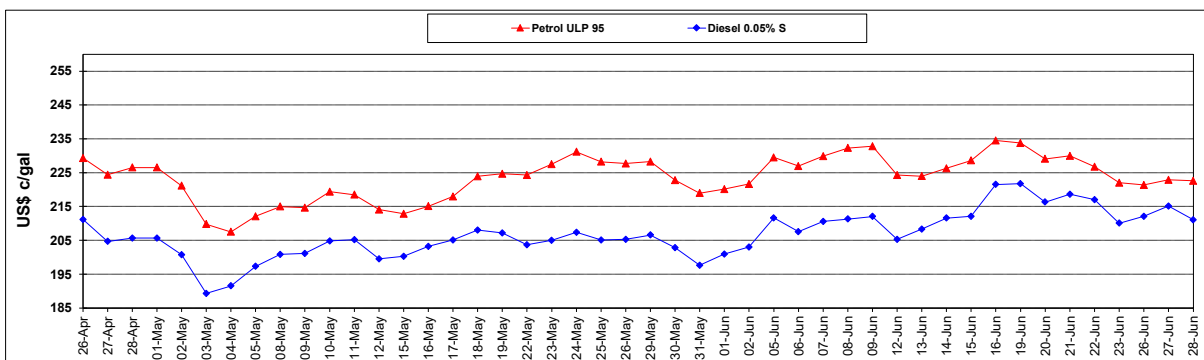
	PETROL 95	PETROL 93	DIESEL 0.05%	DIESEL 0.005%	ILL. PAR.
- MOVEMENT IN INTERNATIONAL PRODUCT PRICES	(3.532)	4.215	(37.722)	(32.065)	(15.827)
- MOVEMENT IN EXCHANGE RATE	19.707	19.060	18.641	19.152	18.837
AVERAGE UNIT OVER/(UNDER) RECOVERY 02/06/2023 - 28/06/2023	16.175	23.275	(19.081)	(12.913)	3.010

R/\$ EXCHANGE RATE - (R/\$18.6195- 28/06/2023)

EXCHANGE RATE USED IN BASIC FUEL PRICE



INTERNATIONAL PRODUCT PRICES OF BASKET USED IN BASIC FUEL PRICE



BASIC FUEL PRICE IN SA CENTS PER LITRE

