

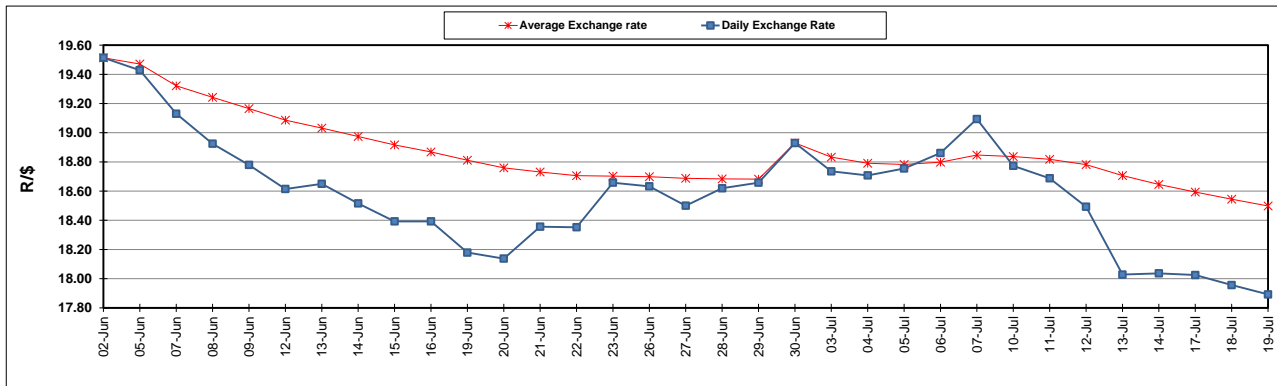
South African Cents per Litre (SA c/l)	PETROL 95 ULP	PETROL 93 ULP & LRP	DIESEL 0.05%	DIESEL 0.005%	ILL. PAR.
GAUTENG PUMP PRICE AS FROM 05/07/2023	2,246.000	2,206.000	-	-	-
WHOLESALE PRICE AS FROM 05/07/2023	-	-	1,949.290	1,981.690	1,392.058
SINGLE NATIONAL MAXIMUM RETAIL PRICE	-	-	-	-	1,796.000
BASIC FUEL PRICE - 20/07/2023	1,257.857	1,214.575	1,207.721	1,239.106	1,225.751
PRESS RELEASE CONTRIBUTION TO BFP 05/07/2023 - 20/07/2023	1,208.970	1,168.970	1,140.630	1,173.030	1,159.128
UNIT OVER/(UNDER) RECOVERY - 20/07/2023	(48.887)	(45.605)	(67.091)	(66.076)	(66.623)
AVERAGE BASIC FUEL PRICE 30/06/2023 - 20/07/2023	1,226.938	1,181.708	1,187.107	1,220.429	1,209.152
AVERAGE UNIT OVER/(UNDER) RECOVERY 30/06/2023 - 20/07/2023	(14.568)	(7.938)	(50.077)	(49.799)	(49.224)

ANALYSIS MOVEMENT OF AVERAGE OVER/(UNDER) RECOVERY

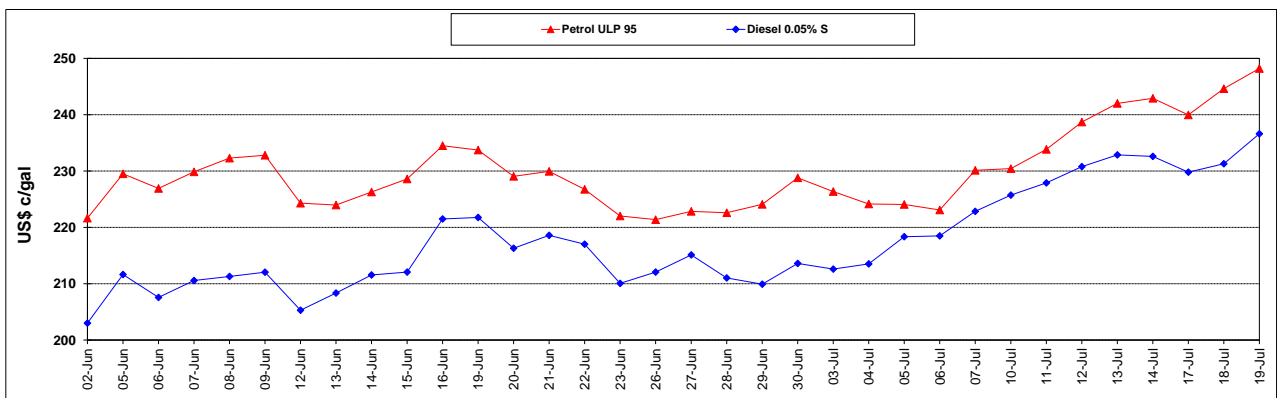
	PETROL 95	PETROL 93	DIESEL 0.05%	DIESEL 0.005%	ILL. PAR.
- MOVEMENT IN INTERNATIONAL PRODUCT PRICES	(30.029)	(22.829)	(65.036)	(65.178)	(64.461)
- MOVEMENT IN EXCHANGE RATE	15.461	14.891	14.959	15.379	15.237
AVERAGE UNIT OVER/(UNDER) RECOVERY 30/06/2023 - 20/07/2023	(14.568)	(7.938)	(50.077)	(49.799)	(49.224)

R/\$ EXCHANGE RATE - (R/\$17.7750 - 20/07/2023)

EXCHANGE RATE USED IN BASIC FUEL PRICE



INTERNATIONAL PRODUCT PRICES OF BASKET USED IN BASIC FUEL PRICE



BASIC FUEL PRICE IN SA CENTS PER LITRE

