

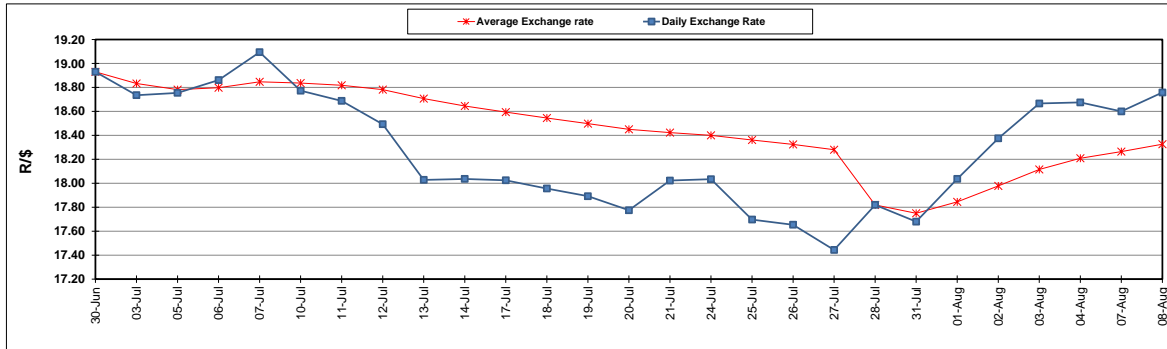
South African Cents per Litre (SA c/l)	PETROL 95 ULP	PETROL 93 ULP & LRP	DIESEL 0.05%	DIESEL 0.005%	ILL. PAR.
GAUTENG PUMP PRICE AS FROM 02/08/2023	2,283.000	2,243.000	-	-	-
WHOLESALE PRICE AS FROM 02/08/2023	-	-	2,021.290	2,052.690	1,463.058
SINGLE NATIONAL MAXIMUM RETAIL PRICE	-	-	-	-	1,891.000
BASIC FUEL PRICE - 08/08/2023	1,363.884	1,319.403	1,452.905	1,482.781	1,470.953
PRESS RELEASE CONTRIBUTION TO BFP 02/08/2023 - 08/08/2023	1,245.970	1,205.970	1,212.630	1,244.030	1,230.128
UNIT OVER/(UNDER) RECOVERY - 08/08/2023	(117.914)	(113.433)	(240.275)	(238.751)	(240.825)
AVERAGE BASIC FUEL PRICE 28/07/2023 - 08/08/2023	1,345.846	1,302.396	1,427.845	1,458.918	1,433.714
AVERAGE UNIT OVER/(UNDER) RECOVERY 28/07/2023 - 08/08/2023	(113.751)	(110.301)	(242.215)	(241.513)	(230.211)

ANALYSIS MOVEMENT OF AVERAGE OVER/(UNDER) RECOVERY

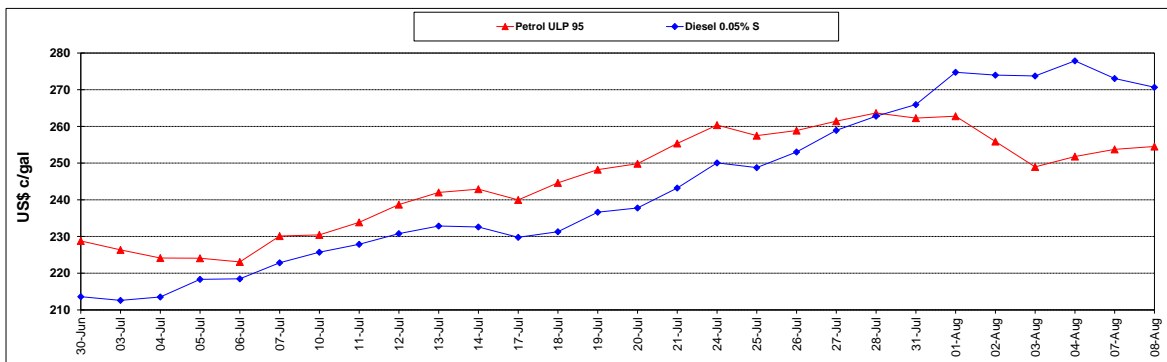
	PETROL 95	PETROL 93	DIESEL 0.05%	DIESEL 0.005%	ILL. PAR.
- MOVEMENT IN INTERNATIONAL PRODUCT PRICES	(110.358)	(107.018)	(238.615)	(237.835)	(226.597)
- MOVEMENT IN EXCHANGE RATE	(3.393)	(3.283)	(3.600)	(3.678)	(3.614)
AVERAGE UNIT OVER/(UNDER) RECOVERY 28/07/2023 - 08/08/2023	(113.751)	(110.301)	(242.215)	(241.513)	(230.211)

R/\$ EXCHANGE RATE - (R/\$18.7580 - 08/08/2023)

EXCHANGE RATE USED IN BASIC FUEL PRICE



INTERNATIONAL PRODUCT PRICES OF BASKET USED IN BASIC FUEL PRICE



BASIC FUEL PRICE IN SA CENTS PER LITRE

