

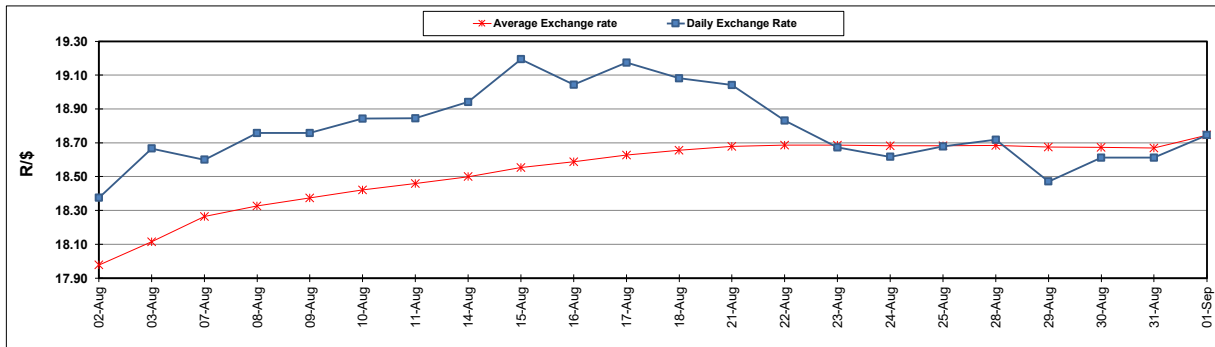
South African Cents per Litre (SA c/l)	PETROL 95 ULP	PETROL 93 ULP & LRP	DIESEL 0.05%	DIESEL 0.005%	ILL. PAR.
GAUTENG PUMP PRICE AS FROM 06/09/2023	2,454.000	2,414.000	-	-	-
WHOLESALE PRICE AS FROM 06/09/2023	-	-	2,305.290	2,328.690	1,741.058
SINGLE NATIONAL MAXIMUM RETAIL PRICE	-	-	-	-	2,261.000
BASIC FUEL PRICE - 01/09/2023	1,415.541	1,371.564	1,508.232	1,520.952	1,515.521
PRESS RELEASE CONTRIBUTION TO BFP 01/09/2023 - 01/09/2023	1,245.970	1,205.970	1,212.630	1,244.030	1,230.128
UNIT OVER/(UNDER) RECOVERY - 01/09/2023	(169.571)	(165.594)	(295.602)	(276.922)	(285.393)
AVERAGE BASIC FUEL PRICE 01/09/2023 - 01/09/2023	1,415.541	1,371.564	1,508.232	1,520.952	1,515.521
AVERAGE UNIT OVER/(UNDER) RECOVERY 01/09/2023 - 01/09/2023	(169.571)	(165.594)	(295.602)	(276.922)	(285.393)

ANALYSIS MOVEMENT OF AVERAGE OVER/(UNDER) RECOVERY

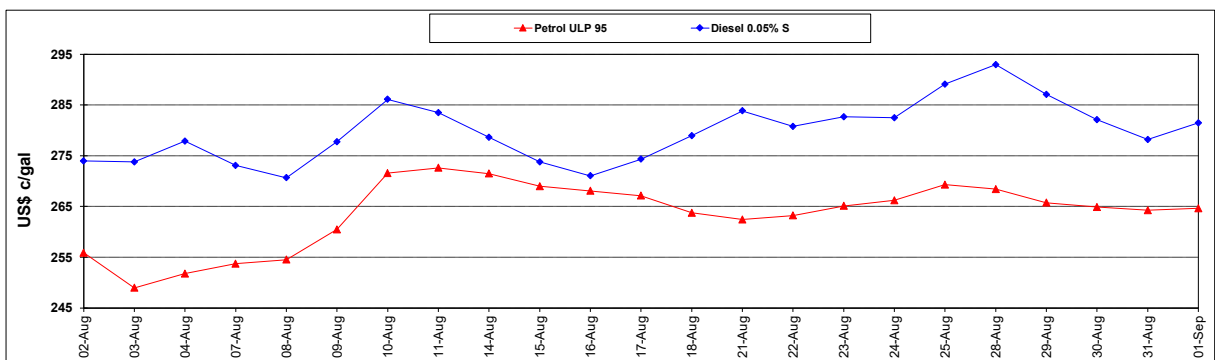
	PETROL 95	PETROL 93	DIESEL 0.05%	DIESEL 0.005%	ILL. PAR.
- MOVEMENT IN INTERNATIONAL PRODUCT PRICES	(164.119)	(160.311)	(289.793)	(271.064)	(279.556)
- MOVEMENT IN EXCHANGE RATE	(5.452)	(5.283)	(5.809)	(5.858)	(5.837)
AVERAGE UNIT OVER/(UNDER) RECOVERY 01/09/2023 - 01/09/2023	(169.571)	(165.594)	(295.602)	(276.922)	(285.393)

R/\$ EXCHANGE RATE - (R/\$18.7453 - 01/09/2023)

EXCHANGE RATE USED IN BASIC FUEL PRICE



INTERNATIONAL PRODUCT PRICES OF BASKET USED IN BASIC FUEL PRICE



BASIC FUEL PRICE IN SA CENTS PER LITRE

