

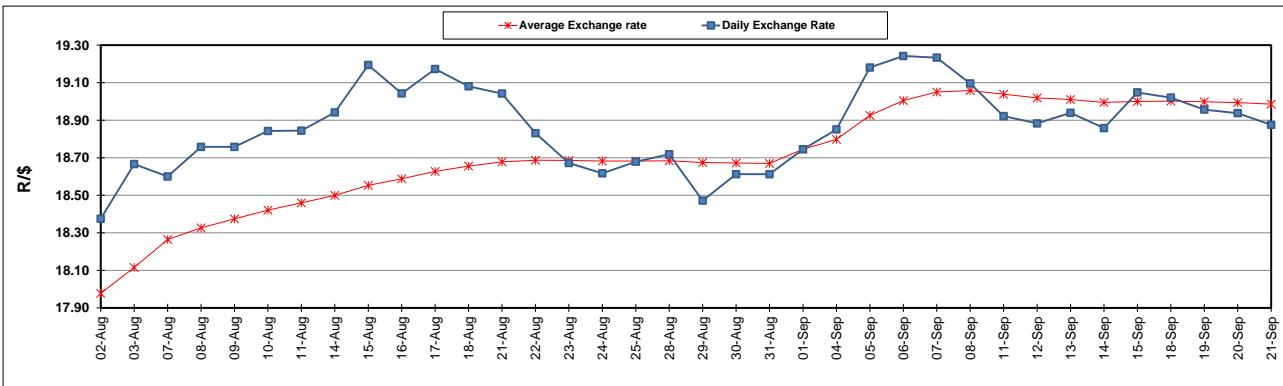
South African Cents per Litre (SA c/l)	PETROL 95 ULP	PETROL 93 ULP & LRP	DIESEL 0.05%	DIESEL 0.005%	ILL. PAR.
GAUTENG PUMP PRICE AS FROM 06/09/2023	2,454.000	2,414.000	-	-	-
WHOLESALE PRICE AS FROM 06/09/2023	-	-	2,305.290	2,328.690	1,741.058
SINGLE NATIONAL MAXIMUM RETAIL PRICE	-	-	-	-	2,261.000
BASIC FUEL PRICE - 21/09/2023	1,447.750	1,405.872	1,628.779	1,655.655	1,636.233
PRESS RELEASE CONTRIBUTION TO BFP 06/09/2023 - 21/09/2023	1,411.970	1,371.970	1,496.630	1,520.030	1,508.128
UNIT OVER/(UNDER) RECOVERY - 21/09/2023	(35.780)	(33.902)	(132.149)	(135.625)	(128.105)
AVERAGE BASIC FUEL PRICE 01/09/2023 - 21/09/2023	1,490.809	1,443.712	1,622.017	1,640.116	1,619.708
AVERAGE UNIT OVER/(UNDER) RECOVERY 01/09/2023 - 21/09/2023	(112.039)	(104.943)	(182.188)	(175.287)	(167.180)

ANALYSIS MOVEMENT OF AVERAGE OVER/(UNDER) RECOVERY

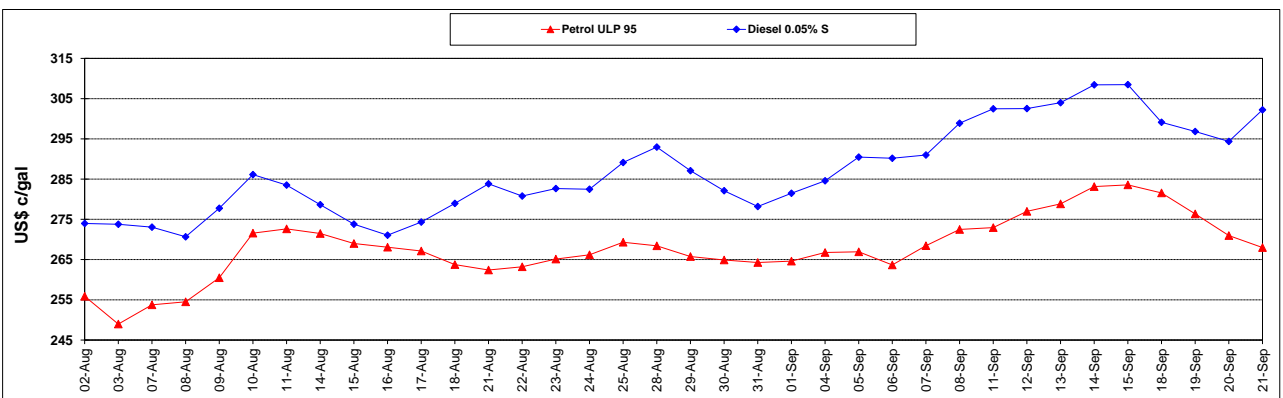
	PETROL 95	PETROL 93	DIESEL 0.05%	DIESEL 0.005%	ILL. PAR.
- MOVEMENT IN INTERNATIONAL PRODUCT PRICES	(87.477)	(81.156)	(155.464)	(148.264)	(140.495)
- MOVEMENT IN EXCHANGE RATE	(24.562)	(23.786)	(26.723)	(27.022)	(26.685)
AVERAGE UNIT OVER/(UNDER) RECOVERY 01/09/2023 - 21/09/2023	(112.039)	(104.943)	(182.188)	(175.287)	(167.180)

R/\$ EXCHANGE RATE - (R/\$18.8755 - 21/09/2023)

EXCHANGE RATE USED IN BASIC FUEL PRICE



INTERNATIONAL PRODUCT PRICES OF BASKET USED IN BASIC FUEL PRICE



BASIC FUEL PRICE IN SA CENTS PER LITRE

