

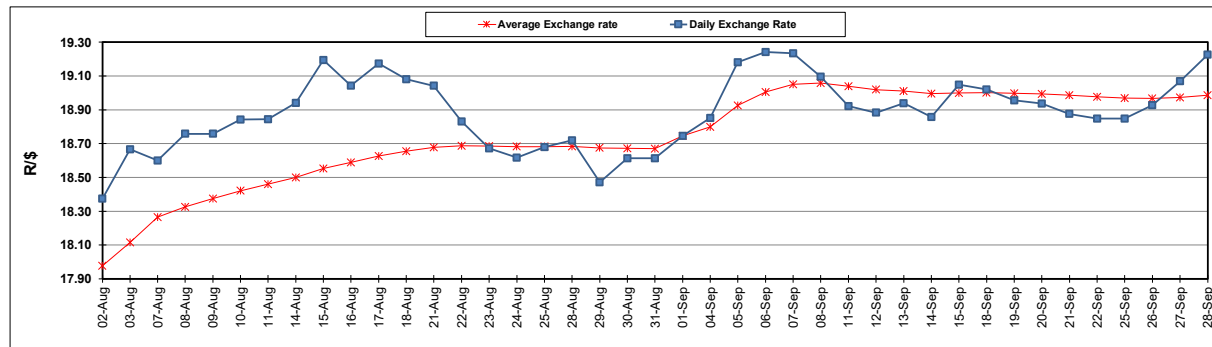
South African Cents per Litre (SA c/l)	PETROL 95 ULP	PETROL 93 ULP & LRP	DIESEL 0.05%	DIESEL 0.005%	ILL. PAR.
GAUTENG PUMP PRICE AS FROM 06/09/2023	2,454.000	2,414.000	-	-	-
WHOLESALE PRICE AS FROM 06/09/2023	-	-	2,305.290	2,328.690	1,741.058
SINGLE NATIONAL MAXIMUM RETAIL PRICE	-	-	-	-	2,261.000
BASIC FUEL PRICE - 28/09/2023	1,401.238	1,356.950	1,648.146	1,679.330	1,647.262
PRESS RELEASE CONTRIBUTION TO BFP 06/09/2023 - 28/09/2023	1,411.970	1,371.970	1,496.630	1,520.030	1,508.128
UNIT OVER/(UNDER) RECOVERY - 28/09/2023	10.732	15.020	(151.516)	(159.300)	(139.134)
AVERAGE BASIC FUEL PRICE 01/09/2023 - 28/09/2023	1,469.977	1,423.723	1,619.509	1,640.921	1,617.166
AVERAGE UNIT OVER/(UNDER) RECOVERY 01/09/2023 - 28/09/2023	(82.907)	(76.653)	(165.479)	(162.291)	(150.738)

ANALYSIS MOVEMENT OF AVERAGE OVER/(UNDER) RECOVERY

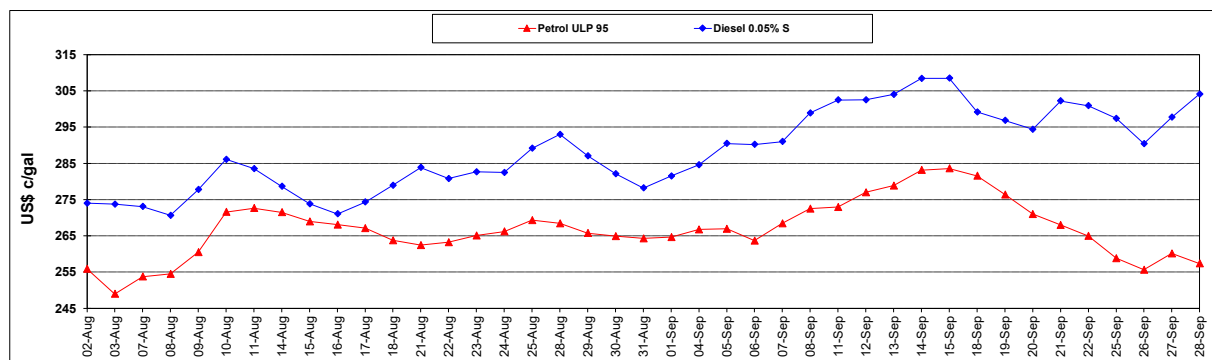
	PETROL 95	PETROL 93	DIESEL 0.05%	DIESEL 0.005%	ILL. PAR.
- MOVEMENT IN INTERNATIONAL PRODUCT PRICES	(58.734)	(53.241)	(138.847)	(135.307)	(124.145)
- MOVEMENT IN EXCHANGE RATE	(24.173)	(23.412)	(26.632)	(26.984)	(26.593)
AVERAGE UNIT OVER/(UNDER) RECOVERY 01/09/2023 - 28/09/2023	(82.907)	(76.653)	(165.479)	(162.291)	(150.738)

R/\$ EXCHANGE RATE - (R/\$19.2260 - 28/09/2023)

EXCHANGE RATE USED IN BASIC FUEL PRICE



INTERNATIONAL PRODUCT PRICES OF BASKET USED IN BASIC FUEL PRICE



BASIC FUEL PRICE IN SA CENTS PER LITRE

