

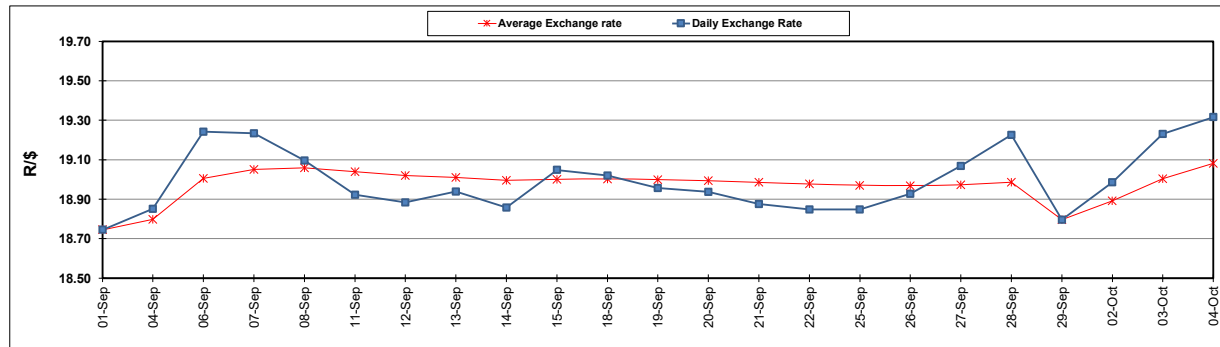
South African Cents per Litre (SA c/l)	PETROL 95 ULP	PETROL 93 ULP & LRP	DIESEL 0.05%	DIESEL 0.005%	ILL. PAR.
GAUTENG PUMP PRICE AS FROM 04/10/2023	2,568.000	2,522.000	-	-	-
WHOLESALE PRICE AS FROM 04/10/2023	-	-	2,501.990	2,522.390	1,892.058
SINGLE NATIONAL MAXIMUM RETAIL PRICE	-	-	-	-	2,463.000
BASIC FUEL PRICE - 04/10/2023	1,279.045	1,239.845	1,577.941	1,609.446	1,583.400
PRESS RELEASE CONTRIBUTION TO BFP 03/10/2023 - 04/10/2023	1,495.270	1,449.270	1,662.630	1,683.030	1,659.128
UNIT OVER/(UNDER) RECOVERY - 04/10/2023	216.225	209.425	84.689	73.584	75.728
AVERAGE BASIC FUEL PRICE 29/09/2023 - 04/10/2023	1,304.021	1,265.294	1,599.266	1,630.553	1,598.774
AVERAGE UNIT OVER/(UNDER) RECOVERY 29/09/2023 - 04/10/2023	128.774	126.001	(61.136)	(69.774)	(52.896)

ANALYSIS MOVEMENT OF AVERAGE OVER/(UNDER) RECOVERY

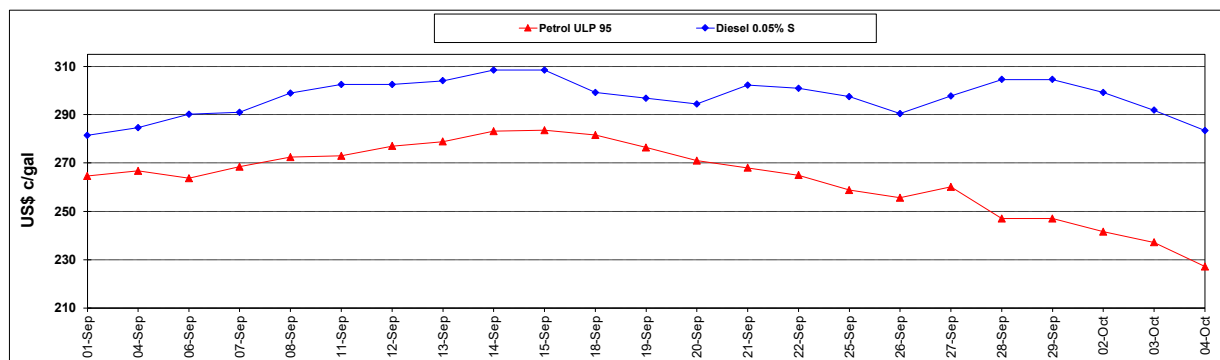
	PETROL 95	PETROL 93	DIESEL 0.05%	DIESEL 0.005%	ILL. PAR.
- MOVEMENT IN INTERNATIONAL PRODUCT PRICES	135.369	132.400	(53.048)	(61.527)	(44.811)
- MOVEMENT IN EXCHANGE RATE	(6.595)	(6.399)	(8.088)	(8.246)	(8.085)
AVERAGE UNIT OVER/(UNDER) RECOVERY 29/09/2023 - 04/10/2023	128.774	126.001	(61.136)	(69.774)	(52.896)

R/\$ EXCHANGE RATE - (R/\$19.3153 - 04/10/2023)

EXCHANGE RATE USED IN BASIC FUEL PRICE



INTERNATIONAL PRODUCT PRICES OF BASKET USED IN BASIC FUEL PRICE



BASIC FUEL PRICE IN SA CENTS PER LITRE

