

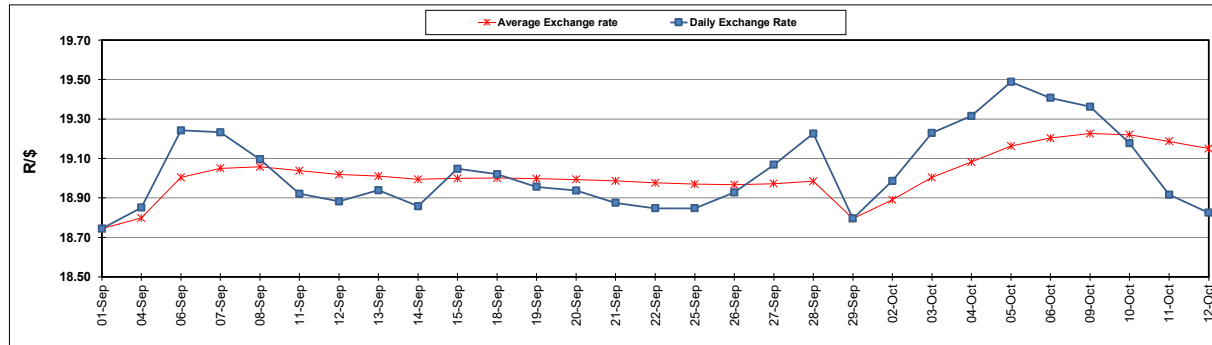
South African Cents per Litre (SA c/l)	PETROL 95 ULP	PETROL 93 ULP & LRP	DIESEL 0.05%	DIESEL 0.005%	ILL. PAR.
GAUTENG PUMP PRICE AS FROM 04/10/2023	2,568.000	2,522.000	-	-	-
WHOLESALE PRICE AS FROM 04/10/2023	-	-	2,501.990	2,522.390	1,892.058
SINGLE NATIONAL MAXIMUM RETAIL PRICE	-	-	-	-	2,463.000
BASIC FUEL PRICE - 12/10/2023	1,231.647	1,191.062	1,479.778	1,502.260	1,488.201
PRESS RELEASE CONTRIBUTION TO BFP 03/10/2023 - 12/10/2023	1,495.270	1,449.270	1,662.630	1,683.030	1,659.128
UNIT OVER/(UNDER) RECOVERY - 12/10/2023	263.623	258.208	182.852	180.770	170.927
AVERAGE BASIC FUEL PRICE 29/09/2023 - 12/10/2023	1,281.713	1,241.391	1,542.130	1,569.597	1,544.404
AVERAGE UNIT OVER/(UNDER) RECOVERY 29/09/2023 - 12/10/2023	188.567	184.689	70.700	64.532	69.424

### ANALYSIS MOVEMENT OF AVERAGE OVER/(UNDER) RECOVERY

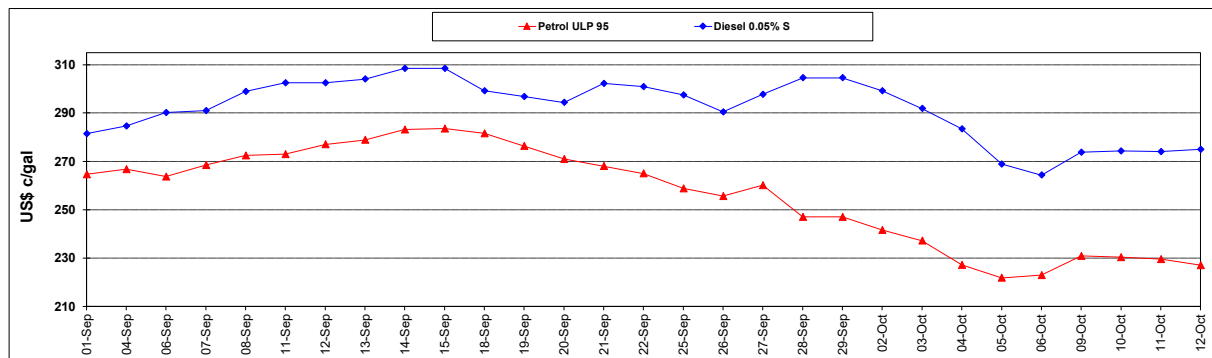
	PETROL 95	PETROL 93	DIESEL 0.05%	DIESEL 0.005%	ILL. PAR.
- MOVEMENT IN INTERNATIONAL PRODUCT PRICES	199.637	195.411	84.019	78.089	82.763
- MOVEMENT IN EXCHANGE RATE	(11.070)	(10.722)	(13.319)	(13.556)	(13.339)
AVERAGE UNIT OVER/(UNDER) RECOVERY 29/09/2023 - 12/10/2023	188.567	184.689	70.700	64.532	69.424

### R/\$ EXCHANGE RATE - (R/\$18.8250 - 12/10/2023)

#### EXCHANGE RATE USED IN BASIC FUEL PRICE



#### INTERNATIONAL PRODUCT PRICES OF BASKET USED IN BASIC FUEL PRICE



#### BASIC FUEL PRICE IN SA CENTS PER LITRE

