

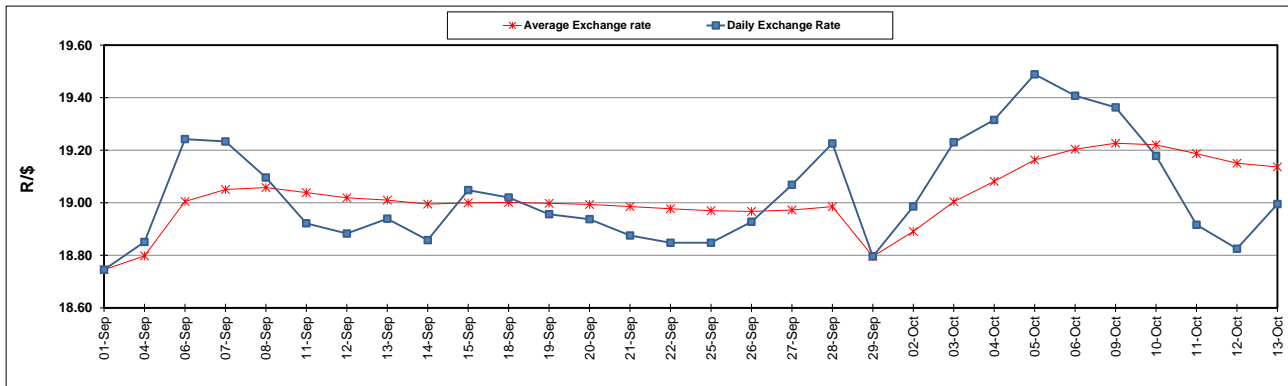
South African Cents per Litre (SA c/l)	PETROL 95 ULP	PETROL 93 ULP & LRP	DIESEL 0.05%	DIESEL 0.005%	ILL. PAR.
GAUTENG PUMP PRICE AS FROM 04/10/2023	2,568.000	2,522.000	-	-	-
WHOLESALE PRICE AS FROM 04/10/2023	-	-	2,501.990	2,522.390	1,892.058
SINGLE NATIONAL MAXIMUM RETAIL PRICE	-	-	-	-	2,463.000
BASIC FUEL PRICE - 13/10/2023	1,258.905	1,217.954	1,545.525	1,567.134	1,559.882
PRESS RELEASE CONTRIBUTION TO BFP 03/10/2023 - 13/10/2023	1,495.270	1,449.270	1,662.630	1,683.030	1,659.128
UNIT OVER/(UNDER) RECOVERY - 13/10/2023	236.365	231.316	117.105	115.896	99.246
AVERAGE BASIC FUEL PRICE 29/09/2023 - 13/10/2023	1,279.640	1,239.260	1,542.439	1,569.373	1,545.811
AVERAGE UNIT OVER/(UNDER) RECOVERY 29/09/2023 - 13/10/2023	192.912	188.928	74.918	69.201	72.135

ANALYSIS MOVEMENT OF AVERAGE OVER/(UNDER) RECOVERY

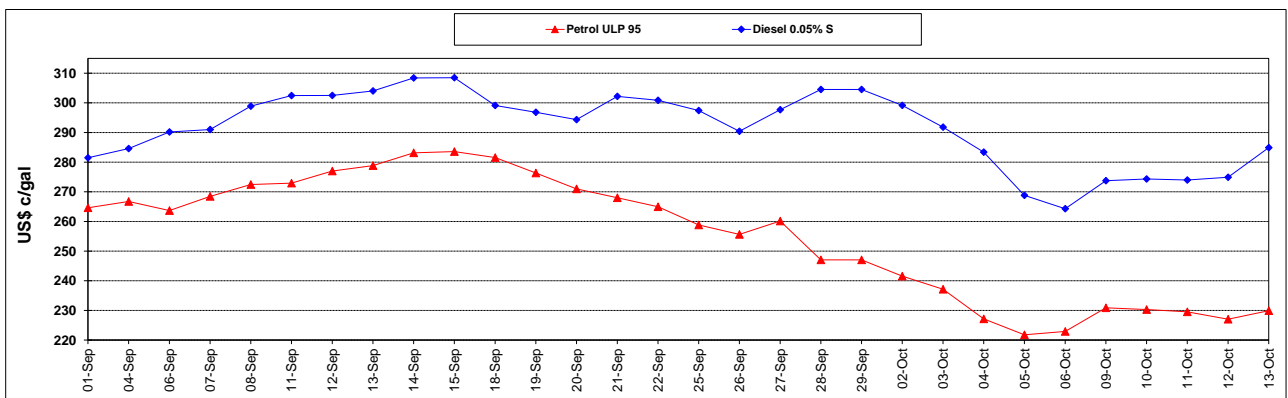
	PETROL 95	PETROL 93	DIESEL 0.05%	DIESEL 0.005%	ILL. PAR.
- MOVEMENT IN INTERNATIONAL PRODUCT PRICES	203.023	198.720	87.105	81.602	84.349
- MOVEMENT IN EXCHANGE RATE	(10.111)	(9.792)	(12.187)	(12.400)	(12.214)
AVERAGE UNIT OVER/(UNDER) RECOVERY 29/09/2023 - 13/10/2023	192.912	188.928	74.918	69.201	72.135

R/\$ EXCHANGE RATE - (R/\$18.9950 - 13/10/2023)

EXCHANGE RATE USED IN BASIC FUEL PRICE



INTERNATIONAL PRODUCT PRICES OF BASKET USED IN BASIC FUEL PRICE



BASIC FUEL PRICE IN SA CENTS PER LITRE

