

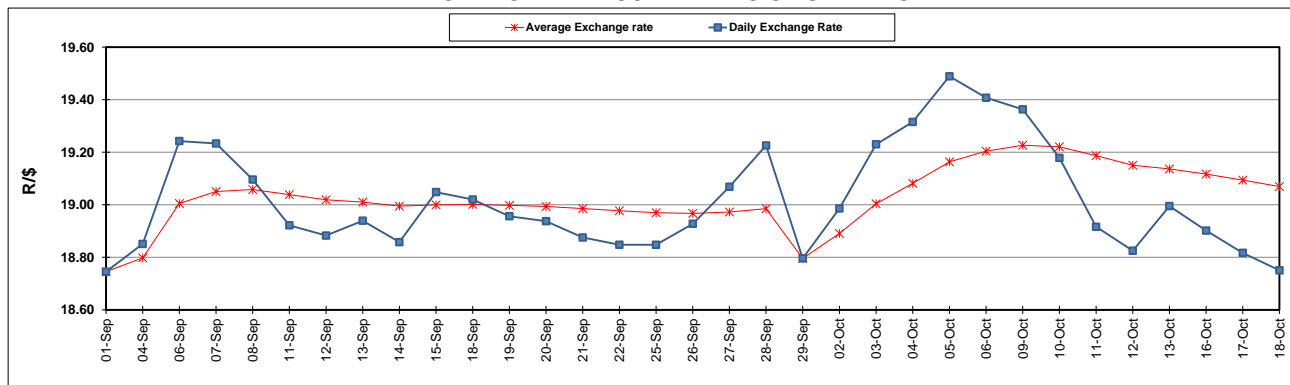
South African Cents per Litre (SA c/l)	PETROL 95 ULP	PETROL 93 ULP & LRP	DIESEL 0.05%	DIESEL 0.005%	ILL. PAR.
GAUTENG PUMP PRICE AS FROM 04/10/2023	2,568.000	2,522.000	-	-	-
WHOLESALE PRICE AS FROM 04/10/2023	-	-	2,501.990	2,522.390	1,892.058
SINGLE NATIONAL MAXIMUM RETAIL PRICE	-	-	-	-	2,463.000
BASIC FUEL PRICE - 18/10/2023	1,273.759	1,236.652	1,513.114	1,535.810	1,526.036
PRESS RELEASE CONTRIBUTION TO BFP 03/10/2023 - 18/10/2023	1,495.270	1,449.270	1,662.630	1,683.030	1,659.128
UNIT OVER/(UNDER) RECOVERY - 18/10/2023	221.511	212.618	149.516	147.220	133.092
AVERAGE BASIC FUEL PRICE 29/09/2023 - 18/10/2023	1,275.709	1,235.638	1,539.029	1,565.206	1,544.211
AVERAGE UNIT OVER/(UNDER) RECOVERY 29/09/2023 - 18/10/2023	201.711	197.068	88.030	82.894	82.560

ANALYSIS MOVEMENT OF AVERAGE OVER/(UNDER) RECOVERY

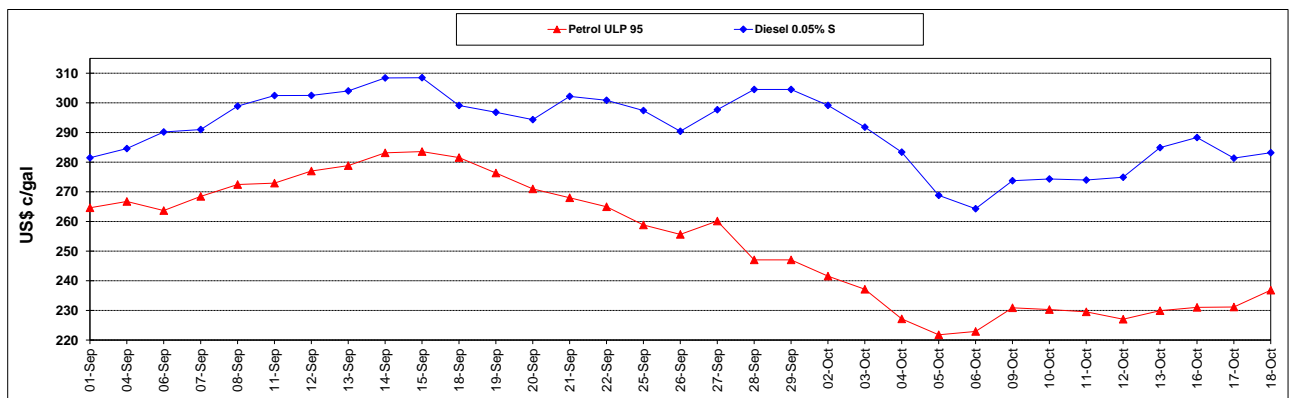
	PETROL 95	PETROL 93	DIESEL 0.05%	DIESEL 0.005%	ILL. PAR.
- MOVEMENT IN INTERNATIONAL PRODUCT PRICES	207.337	202.517	94.817	89.798	89.370
- MOVEMENT IN EXCHANGE RATE	(5.626)	(5.449)	(6.787)	(6.903)	(6.810)
AVERAGE UNIT OVER/(UNDER) RECOVERY 29/09/2023 - 18/10/2023	201.711	197.068	88.030	82.894	82.560

R/\$ EXCHANGE RATE - (R/\$18.7505 - 18/10/2023)

EXCHANGE RATE USED IN BASIC FUEL PRICE



INTERNATIONAL PRODUCT PRICES OF BASKET USED IN BASIC FUEL PRICE



BASIC FUEL PRICE IN SA CENTS PER LITRE

