

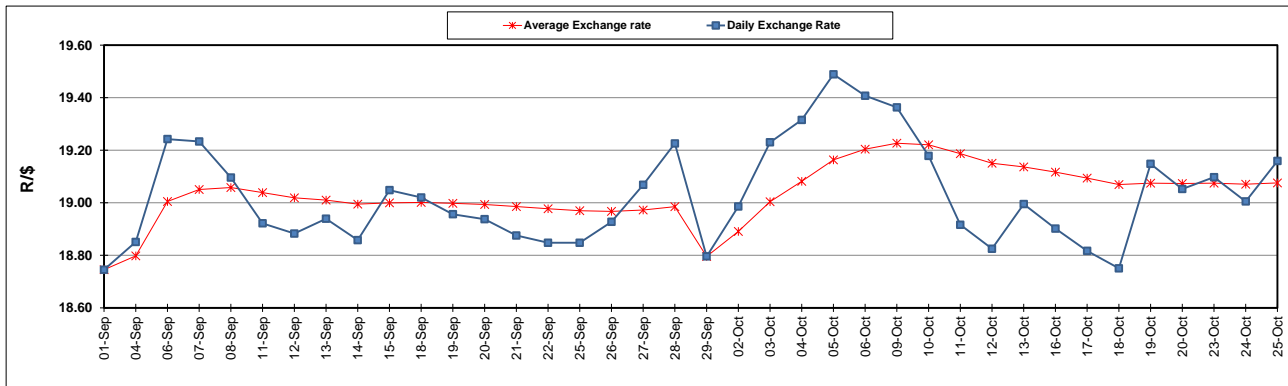
South African Cents per Litre (SA c/l)	PETROL 95 ULP	PETROL 93 ULP & LRP	DIESEL 0.05%	DIESEL 0.005%	ILL. PAR.
GAUTENG PUMP PRICE AS FROM 04/10/2023	2,568.000	2,522.000	-	-	-
WHOLESALE PRICE AS FROM 04/10/2023	-	-	2,501.990	2,522.390	1,892.058
SINGLE NATIONAL MAXIMUM RETAIL PRICE	-	-	-	-	2,463.000
BASIC FUEL PRICE - 25/10/2023	1,282.771	1,235.634	1,467.220	1,485.722	1,485.266
PRESS RELEASE CONTRIBUTION TO BFP 03/10/2023 - 25/10/2023	1,495.270	1,449.270	1,662.630	1,683.030	1,659.128
UNIT OVER/(UNDER) RECOVERY - 25/10/2023	212.499	213.636	195.410	197.308	173.862
AVERAGE BASIC FUEL PRICE 29/09/2023 - 25/10/2023	1,281.589	1,241.157	1,532.550	1,557.035	1,540.919
AVERAGE UNIT OVER/(UNDER) RECOVERY 29/09/2023 - 25/10/2023	200.528	195.908	103.868	100.259	94.367

ANALYSIS MOVEMENT OF AVERAGE OVER/(UNDER) RECOVERY

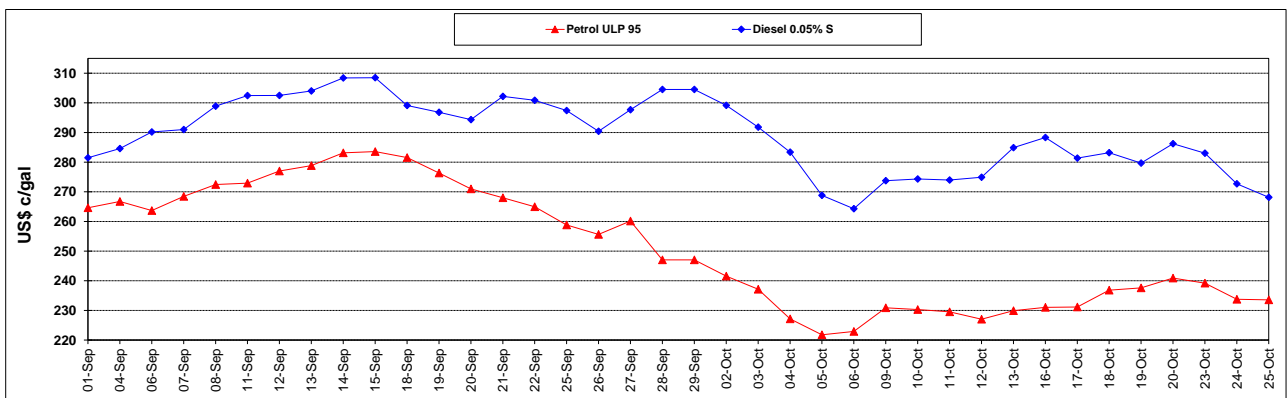
	PETROL 95	PETROL 93	DIESEL 0.05%	DIESEL 0.005%	ILL. PAR.
- MOVEMENT IN INTERNATIONAL PRODUCT PRICES	206.581	201.770	111.108	107.612	101.645
- MOVEMENT IN EXCHANGE RATE	(6.053)	(5.862)	(7.239)	(7.354)	(7.278)
AVERAGE UNIT OVER/(UNDER) RECOVERY 29/09/2023 - 25/10/2023	200.528	195.908	103.868	100.259	94.367

R/\$ EXCHANGE RATE - (R/\$19.1590 - 25/10/2023)

EXCHANGE RATE USED IN BASIC FUEL PRICE



INTERNATIONAL PRODUCT PRICES OF BASKET USED IN BASIC FUEL PRICE



BASIC FUEL PRICE IN SA CENTS PER LITRE

