

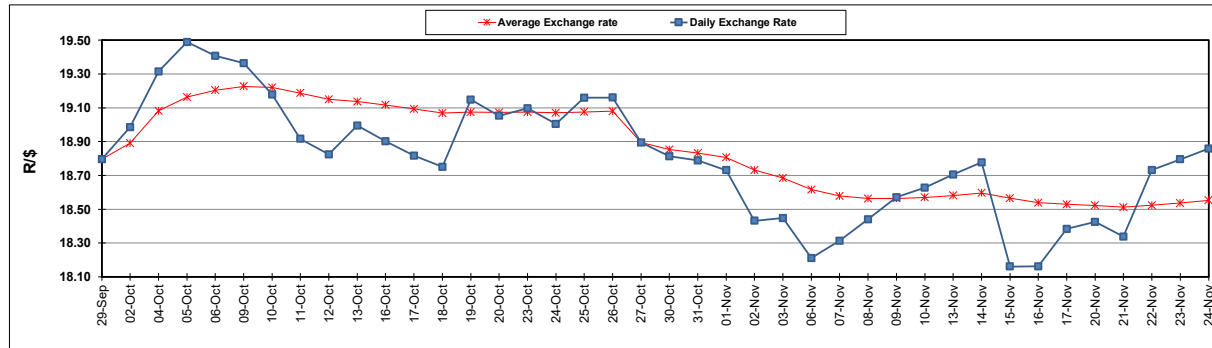
South African Cents per Litre (SA c/l)	PETROL 95 ULP	PETROL 93 ULP & LRP	DIESEL 0.05%	DIESEL 0.005%	ILL. PAR.
GAUTENG PUMP PRICE AS FROM 01/11/2023	2,390.000	2,344.000	-	-	-
WHOLESALE PRICE AS FROM 01/11/2023	-	-	2,416.910	2,440.310	1,795.058
SINGLE NATIONAL MAXIMUM RETAIL PRICE	-	-	-	-	2,333.000
BASIC FUEL PRICE - 24/11/2023	1,237.299	1,195.462	1,353.865	1,369.407	1,402.695
PRESS RELEASE CONTRIBUTION TO BFP 01/11/2023 - 24/11/2023	1,295.350	1,249.350	1,555.630	1,579.030	1,562.128
UNIT OVER/(UNDER) RECOVERY - 24/11/2023	58.051	53.888	201.765	209.623	159.433
AVERAGE BASIC FUEL PRICE 27/10/2023 - 24/11/2023	1,222.771	1,177.786	1,349.785	1,366.937	1,393.900
AVERAGE UNIT OVER/(UNDER) RECOVERY 27/10/2023 - 24/11/2023	101.139	100.124	221.131	226.950	182.085

ANALYSIS MOVEMENT OF AVERAGE OVER/(UNDER) RECOVERY

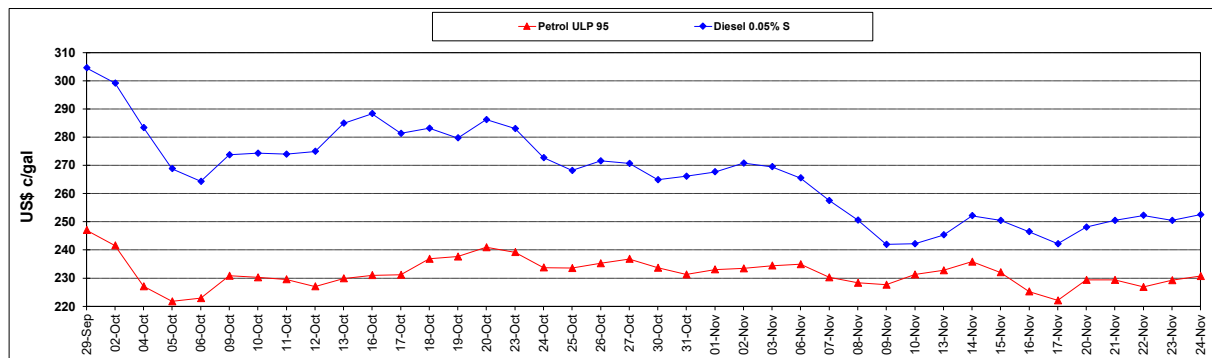
	PETROL 95	PETROL 93	DIESEL 0.05%	DIESEL 0.005%	ILL. PAR.
- MOVEMENT IN INTERNATIONAL PRODUCT PRICES	66.419	66.681	182.805	188.137	142.506
- MOVEMENT IN EXCHANGE RATE	34.720	33.443	38.326	38.813	39.579
AVERAGE UNIT OVER/(UNDER) RECOVERY 27/10/2023 - 24/11/2023	101.139	100.124	221.131	226.950	182.085

R/\$ EXCHANGE RATE - (R/\$18.8580 - 24/11/2023)

EXCHANGE RATE USED IN BASIC FUEL PRICE



INTERNATIONAL PRODUCT PRICES OF BASKET USED IN BASIC FUEL PRICE



BASIC FUEL PRICE IN SA CENTS PER LITRE

