

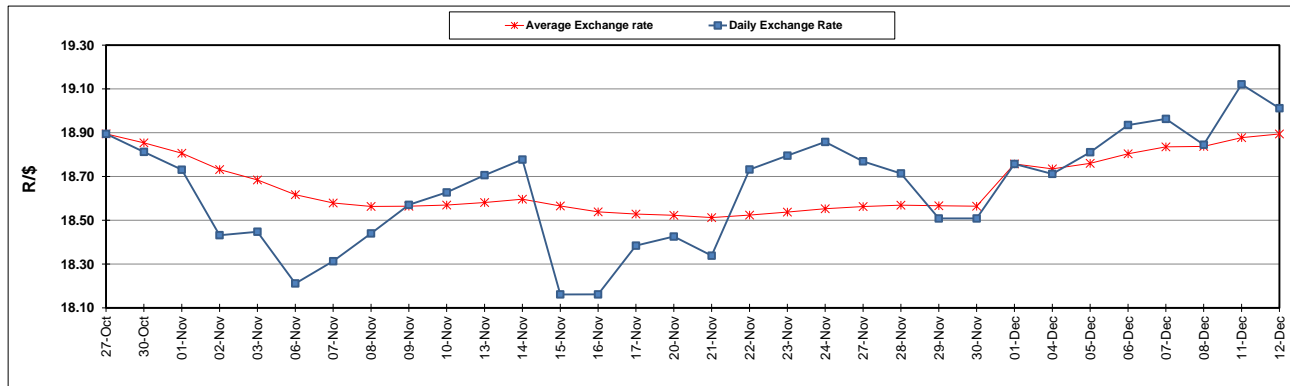
South African Cents per Litre (SA c/l)	PETROL 95 ULP	PETROL 93 ULP & LRP	DIESEL 0.05%	DIESEL 0.005%	ILL. PAR.
GAUTENG PUMP PRICE AS FROM 06/12/2023	2,325.000	2,279.000	-	-	-
WHOLESALE PRICE AS FROM 06/12/2023	-	-	2,181.490	2,198.890	1,623.938
SINGLE NATIONAL MAXIMUM RETAIL PRICE	-	-	-	-	2,105.000
BASIC FUEL PRICE - 12/12/2023	1,146.116	1,113.146	1,262.829	1,270.040	1,287.928
PRESS RELEASE CONTRIBUTION TO BFP 06/12/2023 - 12/12/2023	1,196.550	1,150.550	1,332.630	1,350.030	1,377.128
UNIT OVER/(UNDER) RECOVERY - 12/12/2023	50.434	37.404	69.801	79.990	89.200
AVERAGE BASIC FUEL PRICE 01/12/2023 - 12/12/2023	1,155.891	1,123.370	1,276.511	1,289.688	1,311.193
AVERAGE UNIT OVER/(UNDER) RECOVERY 01/12/2023 - 12/12/2023	77.709	64.230	139.744	146.217	135.310

ANALYSIS MOVEMENT OF AVERAGE OVER/(UNDER) RECOVERY

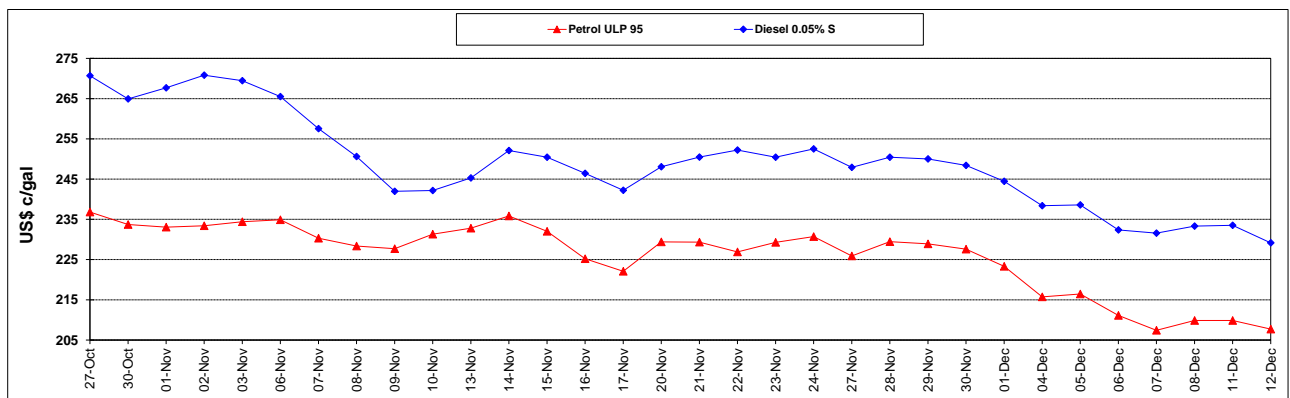
	PETROL 95	PETROL 93	DIESEL 0.05%	DIESEL 0.005%	ILL. PAR.
- MOVEMENT IN INTERNATIONAL PRODUCT PRICES	97.224	83.196	161.296	167.991	157.447
- MOVEMENT IN EXCHANGE RATE	(19.515)	(18.966)	(21.552)	(21.774)	(22.137)
AVERAGE UNIT OVER/(UNDER) RECOVERY 01/12/2023 - 12/12/2023	77.709	64.230	139.744	146.217	135.310

R/\$ EXCHANGE RATE - (R/\$19.0118 - 12/12/2023)

EXCHANGE RATE USED IN BASIC FUEL PRICE



INTERNATIONAL PRODUCT PRICES OF BASKET USED IN BASIC FUEL PRICE



BASIC FUEL PRICE IN SA CENTS PER LITRE

