

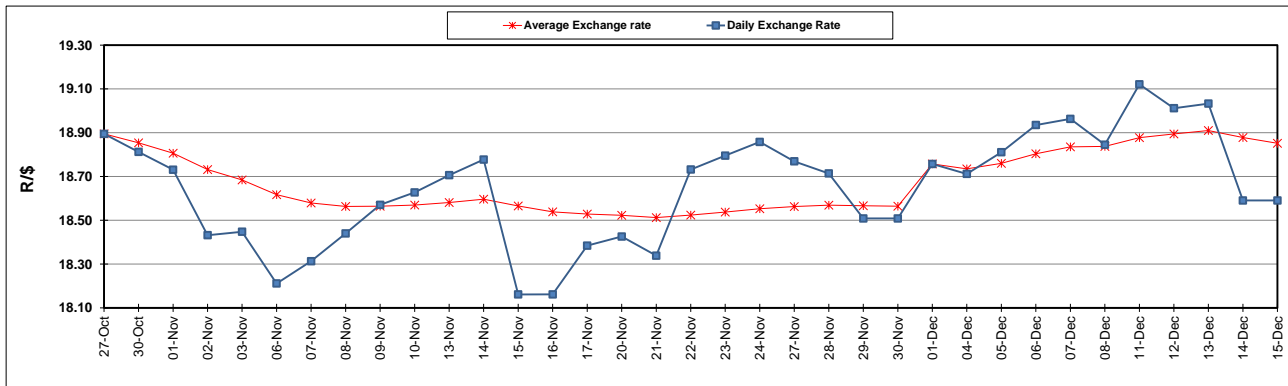
South African Cents per Litre (SA c/l)	PETROL 95 ULP	PETROL 93 ULP & LRP	DIESEL 0.05%	DIESEL 0.005%	ILL. PAR.
GAUTENG PUMP PRICE AS FROM 06/12/2023	2,325.000	2,279.000	-	-	-
WHOLESALE PRICE AS FROM 06/12/2023	-	-	2,181.490	2,198.890	1,623.938
SINGLE NATIONAL MAXIMUM RETAIL PRICE	-	-	-	-	2,105.000
BASIC FUEL PRICE - 15/12/2023	1,165.021	1,134.510	1,267.901	1,274.236	1,297.763
PRESS RELEASE CONTRIBUTION TO BFP 06/12/2023 - 15/12/2023	1,196.550	1,150.550	1,332.630	1,350.030	1,377.128
UNIT OVER/(UNDER) RECOVERY - 15/12/2023	31.529	16.040	64.729	75.794	79.365
AVERAGE BASIC FUEL PRICE 01/12/2023 - 15/12/2023	1,153.660	1,121.534	1,270.380	1,281.712	1,303.971
AVERAGE UNIT OVER/(UNDER) RECOVERY 01/12/2023 - 15/12/2023	69.835	55.961	123.068	130.773	123.612

ANALYSIS MOVEMENT OF AVERAGE OVER/(UNDER) RECOVERY

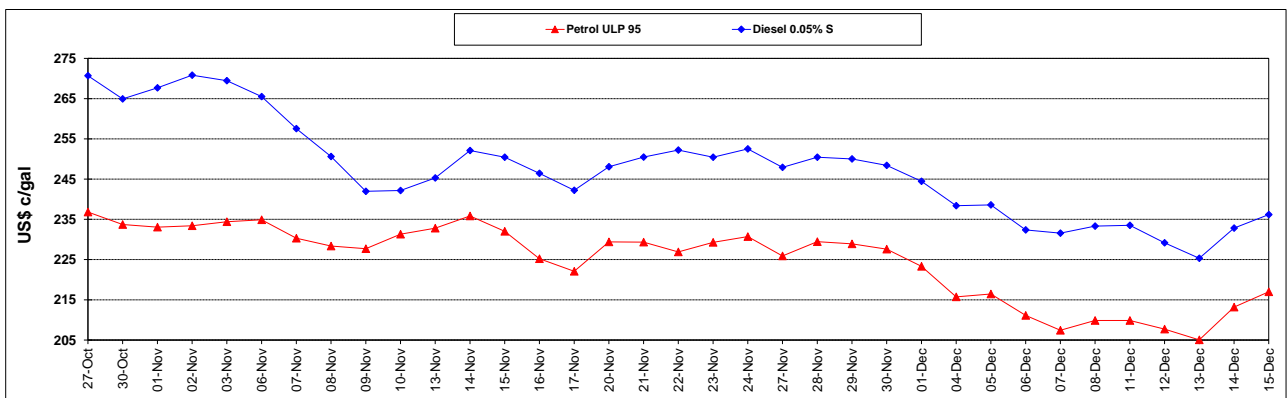
	PETROL 95	PETROL 93	DIESEL 0.05%	DIESEL 0.005%	ILL. PAR.
- MOVEMENT IN INTERNATIONAL PRODUCT PRICES	86.743	72.399	141.687	149.558	142.723
- MOVEMENT IN EXCHANGE RATE	(16.908)	(16.438)	(18.619)	(18.785)	(19.111)
AVERAGE UNIT OVER/(UNDER) RECOVERY 01/12/2023 - 15/12/2023	69.835	55.961	123.068	130.773	123.612

R/\$ EXCHANGE RATE - (R/\$18.5905 - 15/12/2023)

EXCHANGE RATE USED IN BASIC FUEL PRICE



INTERNATIONAL PRODUCT PRICES OF BASKET USED IN BASIC FUEL PRICE



BASIC FUEL PRICE IN SA CENTS PER LITRE

