

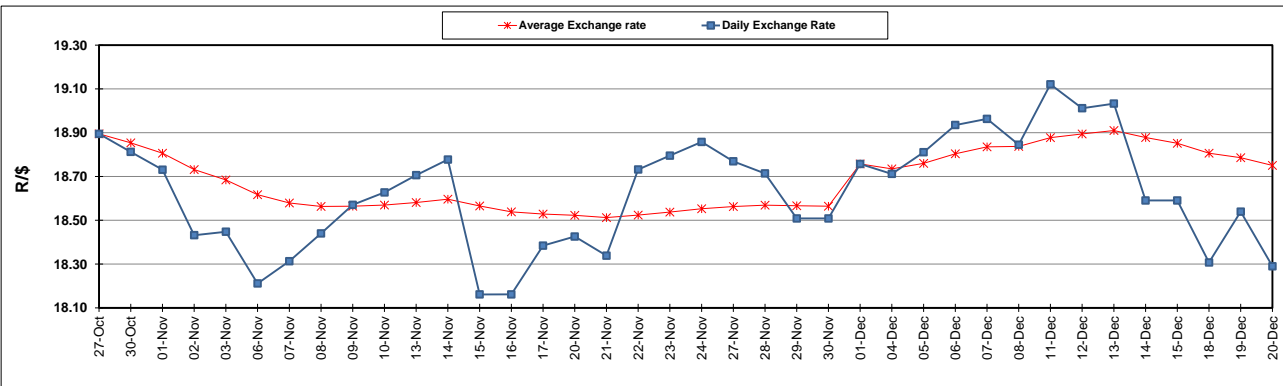
South African Cents per Litre (SA c/l)	PETROL 95 ULP	PETROL 93 ULP & LRP	DIESEL 0.05%	DIESEL 0.005%	ILL. PAR.
GAUTENG PUMP PRICE AS FROM 06/12/2023	2,325.000	2,279.000	-	-	-
WHOLESALE PRICE AS FROM 06/12/2023	-	-	2,181.490	2,198.890	1,623.938
SINGLE NATIONAL MAXIMUM RETAIL PRICE	-	-	-	-	2,105.000
BASIC FUEL PRICE - 20/12/2023	1,181.453	1,150.122	1,296.070	1,302.635	1,345.145
PRESS RELEASE CONTRIBUTION TO BFP 06/12/2023 - 20/12/2023	1,196.550	1,150.550	1,332.630	1,350.030	1,377.128
UNIT OVER/(UNDER) RECOVERY - 20/12/2023	15.097	0.428	36.560	47.395	31.983
AVERAGE BASIC FUEL PRICE 01/12/2023 - 20/12/2023	1,158.071	1,126.176	1,273.978	1,284.380	1,309.952
AVERAGE UNIT OVER/(UNDER) RECOVERY 01/12/2023 - 20/12/2023	59.650	45.545	106.438	114.721	106.819

ANALYSIS MOVEMENT OF AVERAGE OVER/(UNDER) RECOVERY

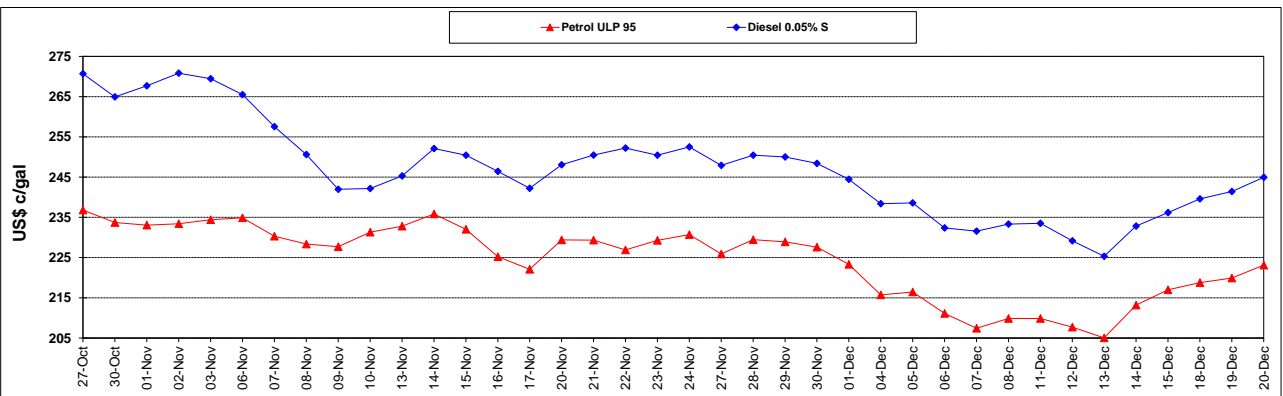
	PETROL 95	PETROL 93	DIESEL 0.05%	DIESEL 0.005%	ILL. PAR.
- MOVEMENT IN INTERNATIONAL PRODUCT PRICES	70.458	56.056	118.328	126.708	119.045
- MOVEMENT IN EXCHANGE RATE	(10.808)	(10.511)	(11.890)	(11.987)	(12.226)
AVERAGE UNIT OVER/(UNDER) RECOVERY 01/12/2023 - 20/12/2023	59.650	45.545	106.438	114.721	106.819

R/\$ EXCHANGE RATE - (R/\$18.2900 - 20/12/2023)

EXCHANGE RATE USED IN BASIC FUEL PRICE



INTERNATIONAL PRODUCT PRICES OF BASKET USED IN BASIC FUEL PRICE



BASIC FUEL PRICE IN SA CENTS PER LITRE

