

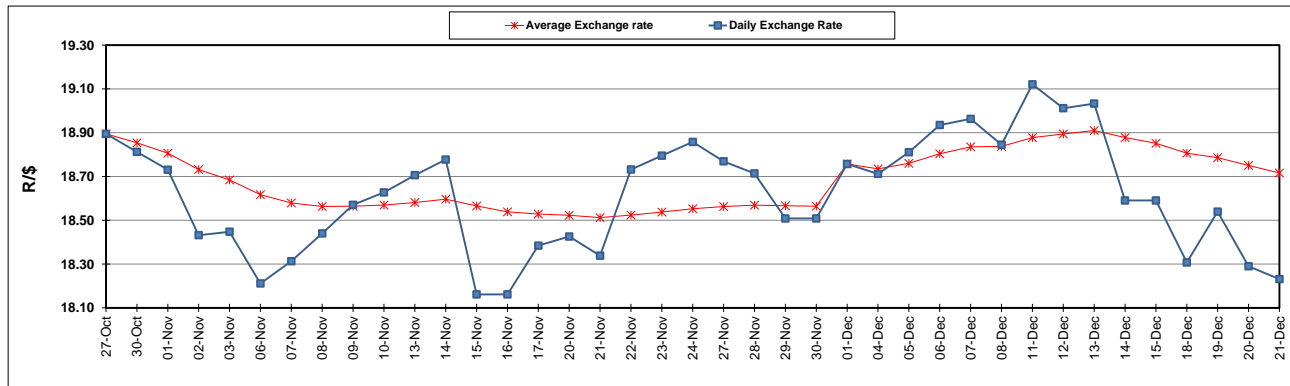
South African Cents per Litre (SA c/l)	PETROL 95 ULP	PETROL 93 ULP & LRP	DIESEL 0.05%	DIESEL 0.005%	ILL. PAR.
GAUTENG PUMP PRICE AS FROM 06/12/2023	2,325.000	2,279.000	-	-	-
WHOLESALE PRICE AS FROM 06/12/2023	-	-	2,181.490	2,198.890	1,623.938
SINGLE NATIONAL MAXIMUM RETAIL PRICE	-	-	-	-	2,105.000
BASIC FUEL PRICE - 21/12/2023	1,155.256	1,124.025	1,276.606	1,283.703	1,320.307
PRESS RELEASE CONTRIBUTION TO BFP 06/12/2023 - 21/12/2023	1,196.550	1,150.550	1,332.630	1,350.030	1,377.128
UNIT OVER/(UNDER) RECOVERY - 21/12/2023	41.294	26.525	56.024	66.327	56.821
AVERAGE BASIC FUEL PRICE 01/12/2023 - 21/12/2023	1,157.883	1,126.032	1,274.153	1,284.335	1,310.642
AVERAGE UNIT OVER/(UNDER) RECOVERY 01/12/2023 - 21/12/2023	58.427	44.278	103.077	111.495	103.486

### ANALYSIS MOVEMENT OF AVERAGE OVER/(UNDER) RECOVERY

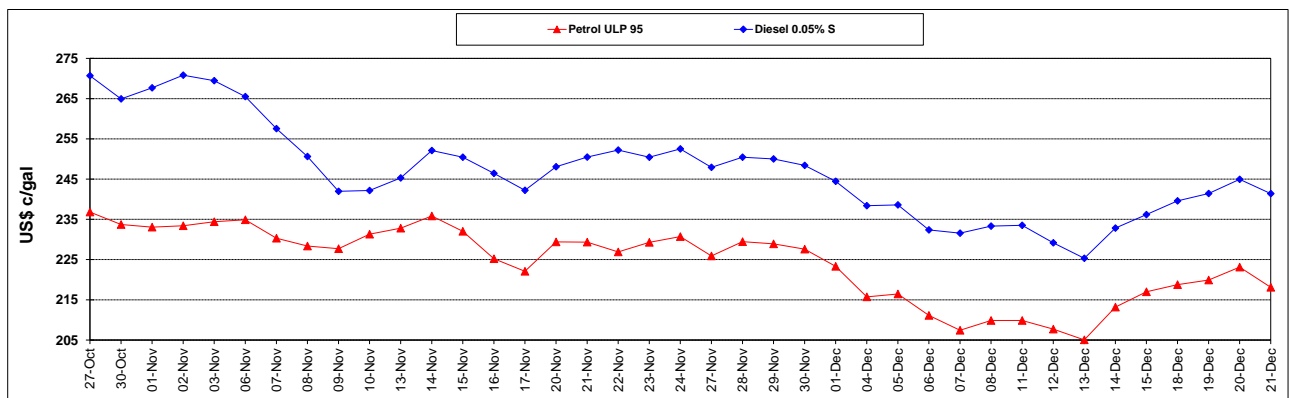
	PETROL 95	PETROL 93	DIESEL 0.05%	DIESEL 0.005%	ILL. PAR.
- MOVEMENT IN INTERNATIONAL PRODUCT PRICES	67.107	52.719	112.628	121.123	113.311
- MOVEMENT IN EXCHANGE RATE	(8.680)	(8.441)	(9.551)	(9.628)	(9.825)
AVERAGE UNIT OVER/(UNDER) RECOVERY 01/12/2023 - 21/12/2023	58.427	44.278	103.077	111.495	103.486

R/\$ EXCHANGE RATE - (R/\$18.2315 - 21/12/2023)

### EXCHANGE RATE USED IN BASIC FUEL PRICE



### INTERNATIONAL PRODUCT PRICES OF BASKET USED IN BASIC FUEL PRICE



### BASIC FUEL PRICE IN SA CENTS PER LITRE

