

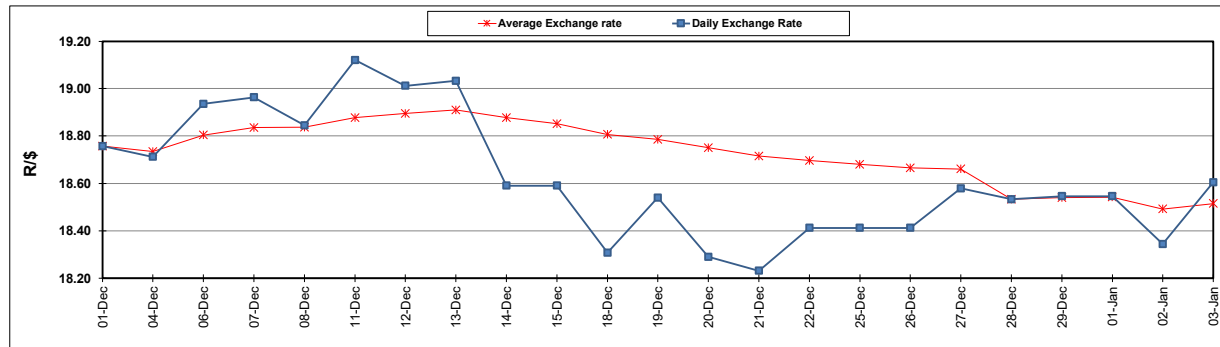
South African Cents per Litre (SA c/l)	PETROL 95 ULP	PETROL 93 ULP & LRP	DIESEL 0.05%	DIESEL 0.005%	ILL. PAR.
GAUTENG PUMP PRICE AS FROM 03/01/2024	2,249.000	2,217.000	-	-	-
WHOLESALE PRICE AS FROM 03/01/2024	-	-	2,063.170	2,072.570	1,530.938
SINGLE NATIONAL MAXIMUM RETAIL PRICE	-	-	-	-	1,981.000
BASIC FUEL PRICE - 03/01/2024	1,170.842	1,140.948	1,264.682	1,272.320	1,294.256
PRESS RELEASE CONTRIBUTION TO BFP 03/01/2024 - 03/01/2024	1,146.870	1,114.870	1,240.630	1,250.030	1,284.128
UNIT OVER/(UNDER) RECOVERY - 03/01/2024	(23.972)	(26.078)	(24.052)	(22.290)	(10.128)
AVERAGE BASIC FUEL PRICE 28/12/2023 - 03/01/2024	1,166.603	1,136.757	1,255.395	1,261.953	1,284.403
AVERAGE UNIT OVER/(UNDER) RECOVERY 28/12/2023 - 03/01/2024	20.011	6.657	58.835	68.077	74.125

ANALYSIS MOVEMENT OF AVERAGE OVER/(UNDER) RECOVERY

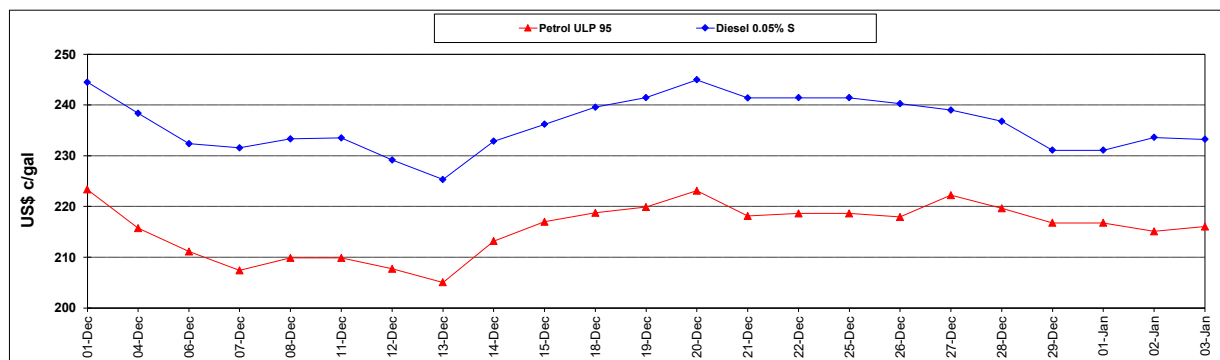
	PETROL 95	PETROL 93	DIESEL 0.05%	DIESEL 0.005%	ILL. PAR.
- MOVEMENT IN INTERNATIONAL PRODUCT PRICES	10.818	(2.301)	48.942	58.133	64.004
- MOVEMENT IN EXCHANGE RATE	9.193	8.958	9.893	9.944	10.121
AVERAGE UNIT OVER/(UNDER) RECOVERY 28/12/2023 - 03/01/2024	20.011	6.657	58.835	68.077	74.125

R/\$ EXCHANGE RATE - (R/\$18.6050 - 03/01/2024)

EXCHANGE RATE USED IN BASIC FUEL PRICE



INTERNATIONAL PRODUCT PRICES OF BASKET USED IN BASIC FUEL PRICE



BASIC FUEL PRICE IN SA CENTS PER LITRE

