

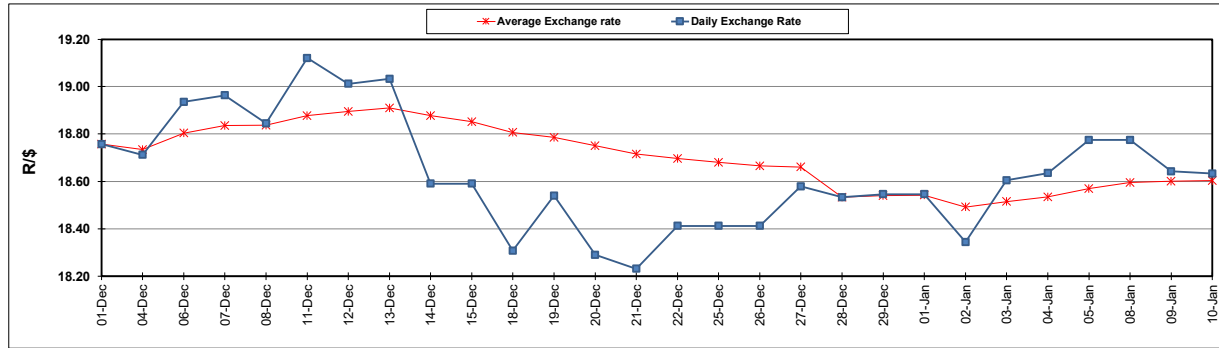
South African Cents per Litre (SA c/l)	PETROL 95 ULP	PETROL 93 ULP & LRP	DIESEL 0.05%	DIESEL 0.005%	ILL. PAR.
GAUTENG PUMP PRICE AS FROM 03/01/2024	2,249.000	2,217.000	-	-	-
WHOLESALE PRICE AS FROM 03/01/2024	-	-	2,063.170	2,072.570	1,530.938
SINGLE NATIONAL MAXIMUM RETAIL PRICE	-	-	-	-	1,981.000
BASIC FUEL PRICE - 10/01/2024	1,170.360	1,136.410	1,291.972	1,295.833	1,323.104
PRESS RELEASE CONTRIBUTION TO BFP 03/01/2024 - 10/01/2024	1,146.870	1,114.870	1,240.630	1,250.030	1,284.128
UNIT OVER/(UNDER) RECOVERY - 10/01/2024	(23.490)	(21.540)	(51.342)	(45.803)	(38.976)
AVERAGE BASIC FUEL PRICE 28/12/2023 - 10/01/2024	1,165.424	1,133.866	1,266.133	1,272.309	1,298.452
AVERAGE UNIT OVER/(UNDER) RECOVERY 28/12/2023 - 10/01/2024	1.318	(4.724)	11.297	17.721	22.876

### ANALYSIS MOVEMENT OF AVERAGE OVER/(UNDER) RECOVERY

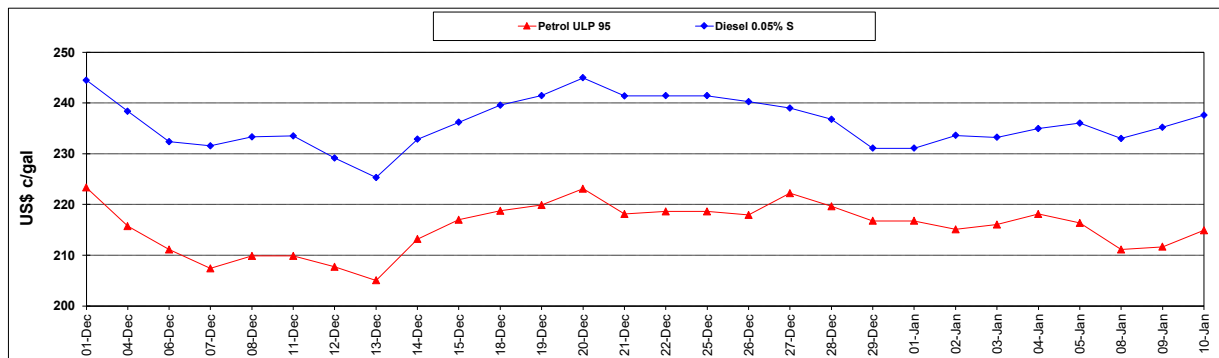
	PETROL 95	PETROL 93	DIESEL 0.05%	DIESEL 0.005%	ILL. PAR.
- MOVEMENT IN INTERNATIONAL PRODUCT PRICES	(2.278)	(8.222)	7.390	13.795	18.870
- MOVEMENT IN EXCHANGE RATE	3.596	3.498	3.907	3.926	4.006
AVERAGE UNIT OVER/(UNDER) RECOVERY 28/12/2023 - 10/01/2024	1.318	(4.724)	11.297	17.721	22.876

### R/\$ EXCHANGE RATE - (R/\$18.6325 - 10/01/2024)

#### EXCHANGE RATE USED IN BASIC FUEL PRICE



#### INTERNATIONAL PRODUCT PRICES OF BASKET USED IN BASIC FUEL PRICE



#### BASIC FUEL PRICE IN SA CENTS PER LITRE

