

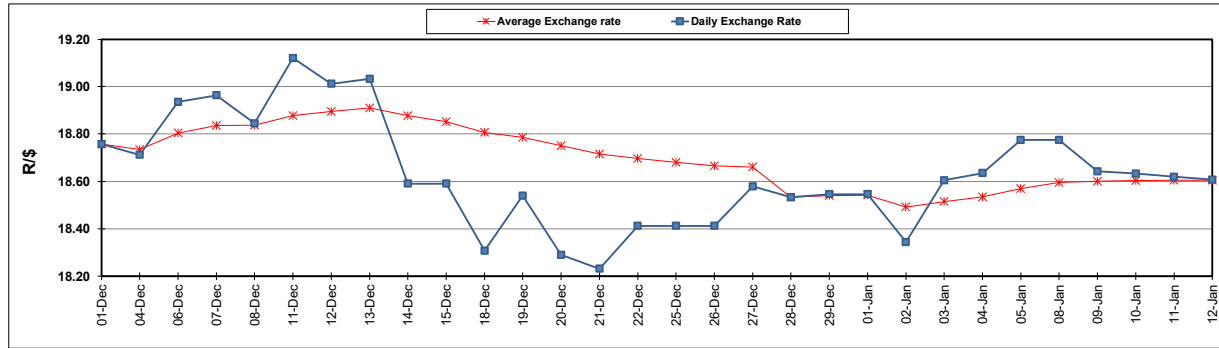
South African Cents per Litre (SA c/l)	PETROL 95 ULP	PETROL 93 ULP & LRP	DIESEL 0.05%	DIESEL 0.005%	ILL. PAR.
GAUTENG PUMP PRICE AS FROM 03/01/2024	2,249.000	2,217.000	-	-	-
WHOLESALE PRICE AS FROM 03/01/2024	-	-	2,063.170	2,072.570	1,530.938
SINGLE NATIONAL MAXIMUM RETAIL PRICE	-	-	-	-	1,981.000
BASIC FUEL PRICE - 12/01/2024	1,207.543	1,167.596	1,330.469	1,334.421	1,358.607
PRESS RELEASE CONTRIBUTION TO BFP 03/01/2024 - 12/01/2024	1,146.870	1,114.870	1,240.630	1,250.030	1,284.128
UNIT OVER/(UNDER) RECOVERY - 12/01/2024	(60.673)	(52.726)	(89.839)	(84.391)	(74.479)
AVERAGE BASIC FUEL PRICE 28/12/2023 - 12/01/2024	1,170.562	1,138.106	1,274.763	1,280.612	1,306.248
AVERAGE UNIT OVER/(UNDER) RECOVERY 28/12/2023 - 12/01/2024	(7.132)	(11.343)	(3.466)	2.751	8.880

ANALYSIS MOVEMENT OF AVERAGE OVER/(UNDER) RECOVERY

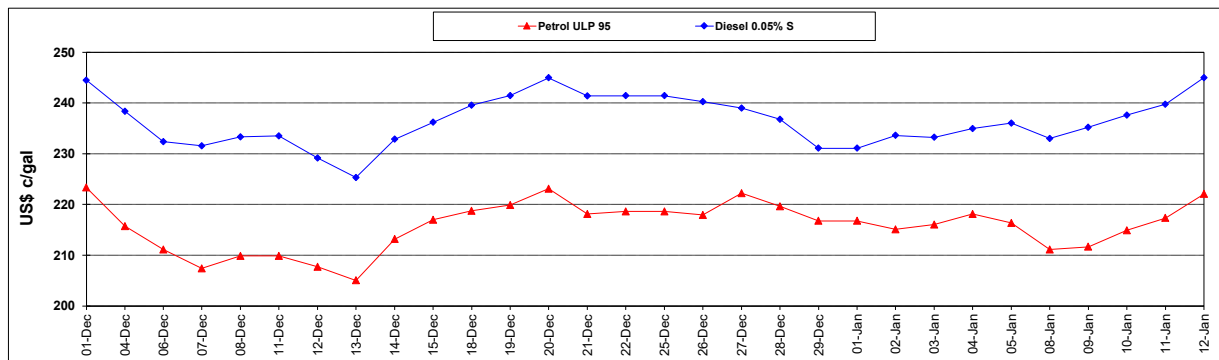
	PETROL 95	PETROL 93	DIESEL 0.05%	DIESEL 0.005%	ILL. PAR.
- MOVEMENT IN INTERNATIONAL PRODUCT PRICES	(10.630)	(14.744)	(7.276)	(1.076)	4.976
- MOVEMENT IN EXCHANGE RATE	3.498	3.401	3.810	3.827	3.904
AVERAGE UNIT OVER/(UNDER) RECOVERY 28/12/2023 - 12/01/2024	(7.132)	(11.343)	(3.466)	2.751	8.880

R/\$ EXCHANGE RATE - (R/\$18.6075 - 12/01/2024)

EXCHANGE RATE USED IN BASIC FUEL PRICE



INTERNATIONAL PRODUCT PRICES OF BASKET USED IN BASIC FUEL PRICE



BASIC FUEL PRICE IN SA CENTS PER LITRE

