

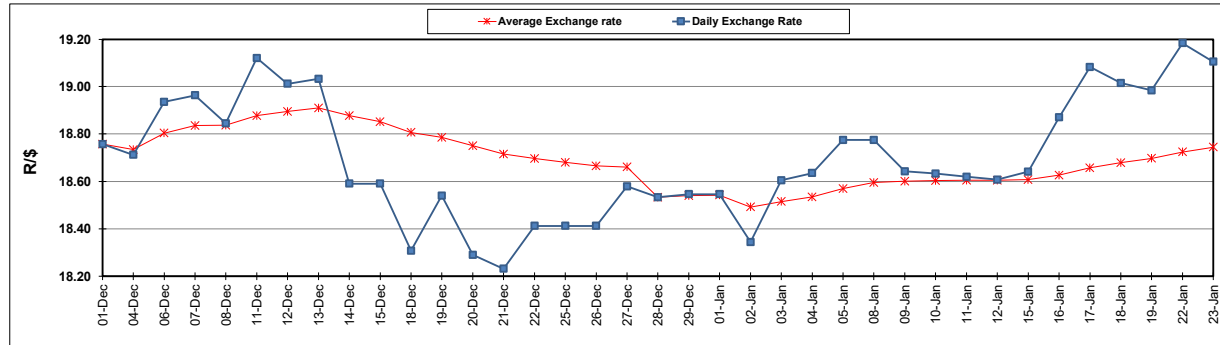
South African Cents per Litre (SA c/l)	PETROL 95 ULP	PETROL 93 ULP & LRP	DIESEL 0.05%	DIESEL 0.005%	ILL. PAR.
GAUTENG PUMP PRICE AS FROM 03/01/2024	2,249.000	2,217.000	-	-	-
WHOLESALE PRICE AS FROM 03/01/2024	-	-	2,063.170	2,072.570	1,530.938
SINGLE NATIONAL MAXIMUM RETAIL PRICE	-	-	-	-	1,981.000
BASIC FUEL PRICE - 23/01/2024	1,315.177	1,269.409	1,393.664	1,401.855	1,417.316
PRESS RELEASE CONTRIBUTION TO BFP 03/01/2024 - 23/01/2024	1,146.870	1,114.870	1,240.630	1,250.030	1,284.128
UNIT OVER/(UNDER) RECOVERY - 23/01/2024	(168.307)	(154.539)	(153.034)	(151.825)	(133.188)
AVERAGE BASIC FUEL PRICE 28/12/2023 - 23/01/2024	1,201.060	1,164.928	1,304.888	1,311.205	1,338.278
AVERAGE UNIT OVER/(UNDER) RECOVERY 28/12/2023 - 23/01/2024	(43.731)	(42.546)	(44.890)	(40.122)	(34.571)

ANALYSIS MOVEMENT OF AVERAGE OVER/(UNDER) RECOVERY

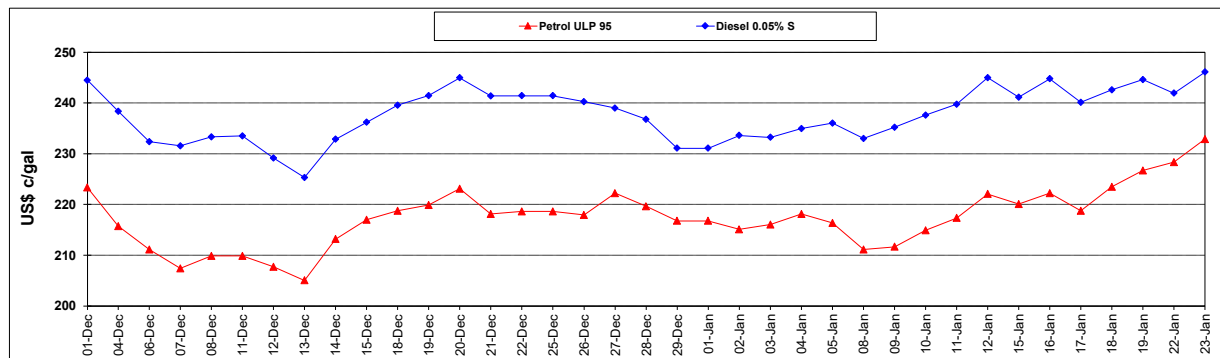
	PETROL 95	PETROL 93	DIESEL 0.05%	DIESEL 0.005%	ILL. PAR.
- MOVEMENT IN INTERNATIONAL PRODUCT PRICES	(38.374)	(37.350)	(39.070)	(34.274)	(28.602)
- MOVEMENT IN EXCHANGE RATE	(5.357)	(5.196)	(5.820)	(5.848)	(5.969)
AVERAGE UNIT OVER/(UNDER) RECOVERY 28/12/2023 - 23/01/2024	(43.731)	(42.546)	(44.890)	(40.122)	(34.571)

R/\$ EXCHANGE RATE - (R/\$19.1050 - 23/01/2024)

EXCHANGE RATE USED IN BASIC FUEL PRICE



INTERNATIONAL PRODUCT PRICES OF BASKET USED IN BASIC FUEL PRICE



BASIC FUEL PRICE IN SA CENTS PER LITRE

