

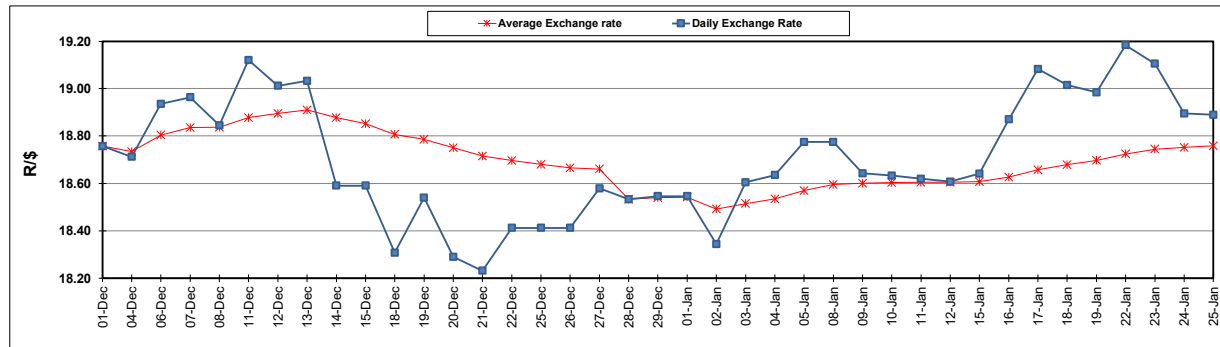
South African Cents per Litre (SA c/l)	PETROL 95 ULP	PETROL 93 ULP & LRP	DIESEL 0.05%	DIESEL 0.005%	ILL. PAR.
GAUTENG PUMP PRICE AS FROM 03/01/2024	2,249.000	2,217.000	-	-	-
WHOLESALE PRICE AS FROM 03/01/2024	-	-	2,063.170	2,072.570	1,530.938
SINGLE NATIONAL MAXIMUM RETAIL PRICE	-	-	-	-	1,981.000
BASIC FUEL PRICE - 25/01/2024	1,330.247	1,286.658	1,397.267	1,404.906	1,408.377
PRESS RELEASE CONTRIBUTION TO BFP 03/01/2024 - 25/01/2024	1,146.870	1,114.870	1,240.630	1,250.030	1,284.128
UNIT OVER/(UNDER) RECOVERY - 25/01/2024	(183.377)	(171.788)	(156.637)	(154.876)	(124.249)
AVERAGE BASIC FUEL PRICE 28/12/2023 - 25/01/2024	1,203.975	1,167.057	1,303.654	1,310.153	1,335.423
AVERAGE UNIT OVER/(UNDER) RECOVERY 28/12/2023 - 25/01/2024	(47.642)	(45.391)	(45.500)	(41.075)	(33.581)

### ANALYSIS MOVEMENT OF AVERAGE OVER/(UNDER) RECOVERY

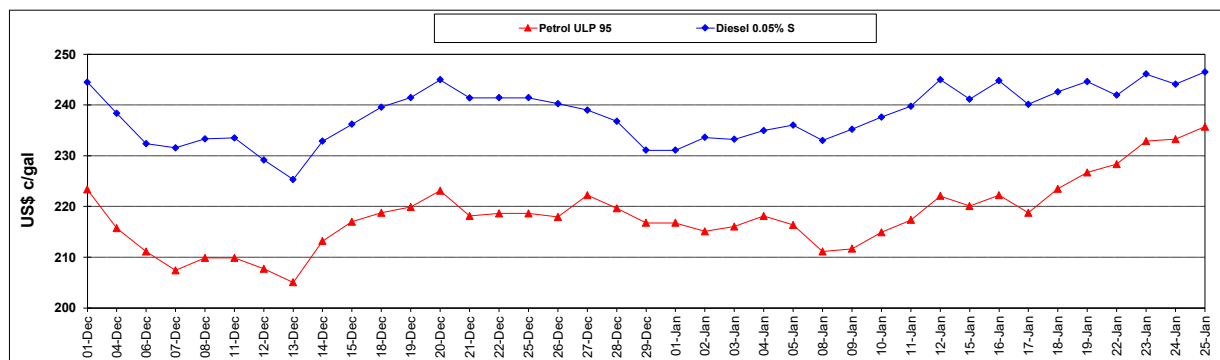
	PETROL 95	PETROL 93	DIESEL 0.05%	DIESEL 0.005%	ILL. PAR.
- MOVEMENT IN INTERNATIONAL PRODUCT PRICES	(41.371)	(39.313)	(38.710)	(34.251)	(26.626)
- MOVEMENT IN EXCHANGE RATE	(6.271)	(6.078)	(6.790)	(6.824)	(6.955)
AVERAGE UNIT OVER/(UNDER) RECOVERY 28/12/2023 - 25/01/2024	(47.642)	(45.391)	(45.500)	(41.075)	(33.581)

### R/\$ EXCHANGE RATE - (R/\$18.8900 - 25/01/2024)

#### EXCHANGE RATE USED IN BASIC FUEL PRICE



#### INTERNATIONAL PRODUCT PRICES OF BASKET USED IN BASIC FUEL PRICE



#### BASIC FUEL PRICE IN SA CENTS PER LITRE

