

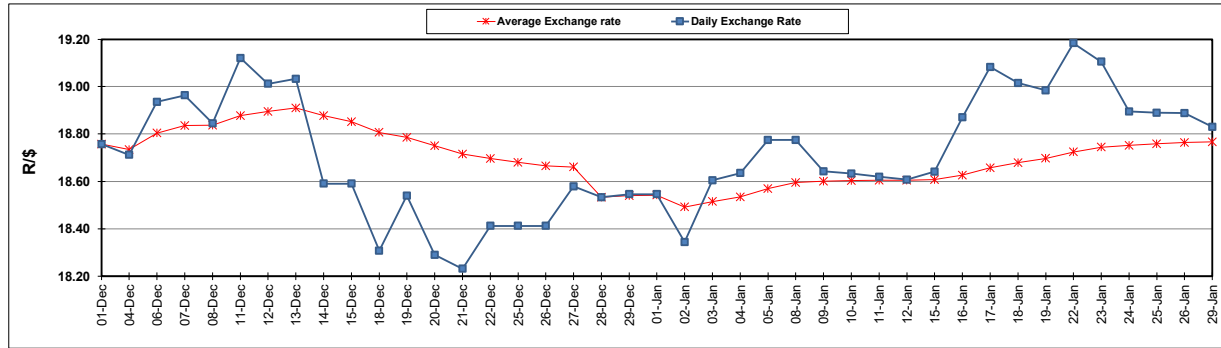
South African Cents per Litre (SA c/l)	PETROL 95 ULP	PETROL 93 ULP & LRP	DIESEL 0.05%	DIESEL 0.005%	ILL. PAR.
GAUTENG PUMP PRICE AS FROM 03/01/2024	2,249.000	2,217.000	-	-	-
WHOLESALE PRICE AS FROM 03/01/2024	-	-	2,063.170	2,072.570	1,530.938
SINGLE NATIONAL MAXIMUM RETAIL PRICE	-	-	-	-	1,981.000
BASIC FUEL PRICE - 29/01/2024	1,356.617	1,317.944	1,436.963	1,445.397	1,427.320
PRESS RELEASE CONTRIBUTION TO BFP 03/01/2024 - 29/01/2024	1,146.870	1,114.870	1,240.630	1,250.030	1,284.128
UNIT OVER/(UNDER) RECOVERY - 29/01/2024	(209.747)	(203.074)	(196.333)	(195.367)	(143.192)
AVERAGE BASIC FUEL PRICE 28/12/2023 - 29/01/2024	1,216.574	1,179.366	1,314.328	1,320.978	1,343.026
AVERAGE UNIT OVER/(UNDER) RECOVERY 28/12/2023 - 29/01/2024	(61.064)	(58.291)	(57.698)	(53.557)	(42.724)

ANALYSIS MOVEMENT OF AVERAGE OVER/(UNDER) RECOVERY

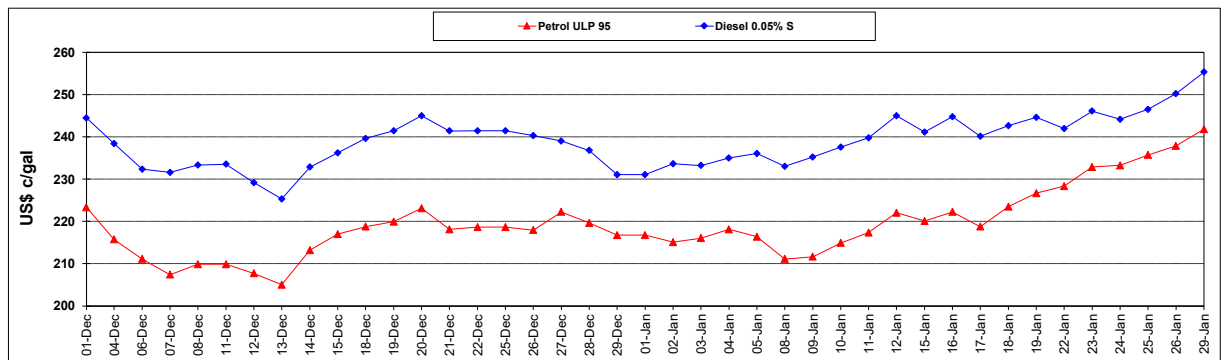
	PETROL 95	PETROL 93	DIESEL 0.05%	DIESEL 0.005%	ILL. PAR.
- MOVEMENT IN INTERNATIONAL PRODUCT PRICES	(54.160)	(51.598)	(50.239)	(46.061)	(35.103)
- MOVEMENT IN EXCHANGE RATE	(6.904)	(6.693)	(7.459)	(7.496)	(7.621)
AVERAGE UNIT OVER/(UNDER) RECOVERY 28/12/2023 - 29/01/2024	(61.064)	(58.291)	(57.698)	(53.557)	(42.724)

R/\$ EXCHANGE RATE - (R/\$18.8300 - 29/01/2024)

EXCHANGE RATE USED IN BASIC FUEL PRICE



INTERNATIONAL PRODUCT PRICES OF BASKET USED IN BASIC FUEL PRICE



BASIC FUEL PRICE IN SA CENTS PER LITRE

