

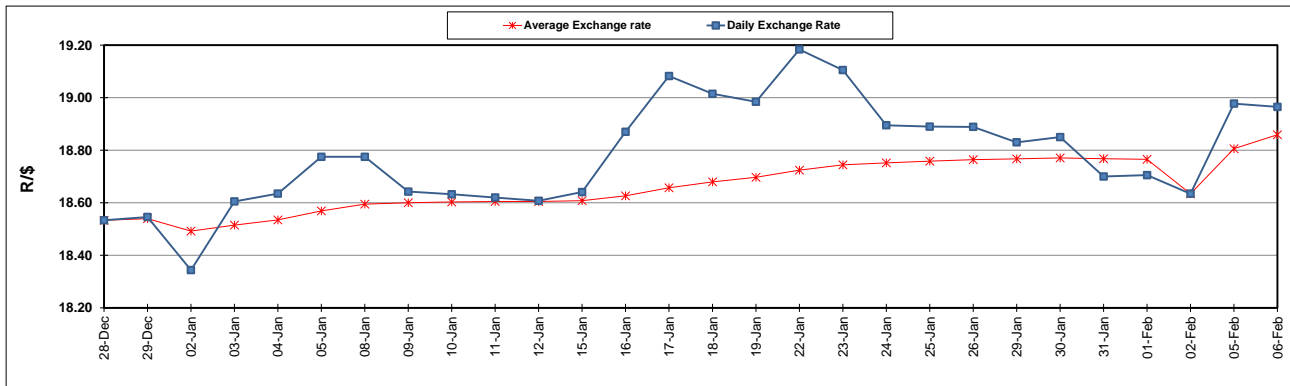
South African Cents per Litre (SA c/l)	PETROL 95 ULP	PETROL 93 ULP & LRP	DIESEL 0.05%	DIESEL 0.005%	ILL. PAR.
GAUTENG PUMP PRICE AS FROM 07/02/2024	2,324.000	2,292.000	-	-	-
WHOLESALE PRICE AS FROM 07/02/2024	-	-	2,136.170	2,142.570	1,583.938
SINGLE NATIONAL MAXIMUM RETAIL PRICE AS FROM 07/02/2024	-	-	-	-	2,052.000
BASIC FUEL PRICE - 06/02/2024	1,311.651	1,273.007	1,410.834	1,430.509	1,399.127
PRESS RELEASE CONTRIBUTION TO BFP 02/02/2024 - 06/02/2024	1,146.870	1,114.870	1,240.630	1,250.030	1,284.128
UNIT OVER/(UNDER) RECOVERY - 06/02/2024	(164.781)	(158.137)	(170.204)	(180.479)	(114.999)
AVERAGE BASIC FUEL PRICE 02/02/2024 - 06/02/2024	1,300.656	1,262.229	1,389.881	1,408.512	1,380.537
AVERAGE UNIT OVER/(UNDER) RECOVERY 02/02/2024 - 06/02/2024	(153.786)	(147.359)	(149.251)	(158.482)	(96.409)

### ANALYSIS MOVEMENT OF AVERAGE OVER/(UNDER) RECOVERY

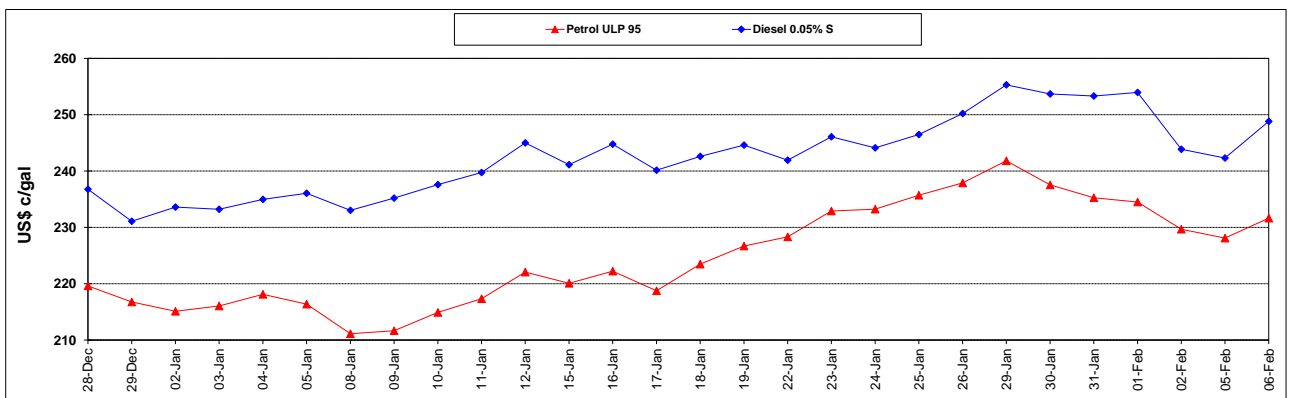
	PETROL 95	PETROL 93	DIESEL 0.05%	DIESEL 0.005%	ILL. PAR.
- MOVEMENT IN INTERNATIONAL PRODUCT PRICES	(147.338)	(141.101)	(142.360)	(151.499)	(89.565)
- MOVEMENT IN EXCHANGE RATE	(6.448)	(6.258)	(6.891)	(6.983)	(6.844)
AVERAGE UNIT OVER/(UNDER) RECOVERY 02/02/2024 - 06/02/2024	(153.786)	(147.359)	(149.251)	(158.482)	(96.409)

R/\$ EXCHANGE RATE - (R/\$18.9650 - 06/02/2024)

### EXCHANGE RATE USED IN BASIC FUEL PRICE



### INTERNATIONAL PRODUCT PRICES OF BASKET USED IN BASIC FUEL PRICE



### BASIC FUEL PRICE IN SA CENTS PER LITRE

