

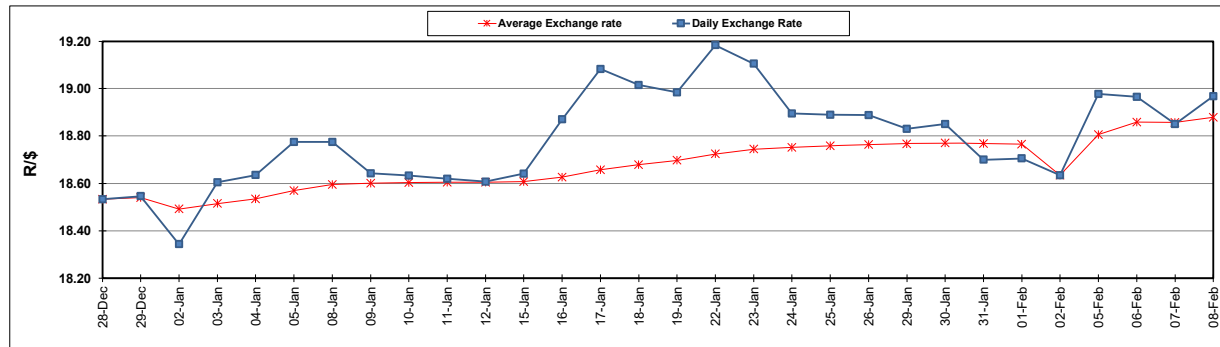
South African Cents per Litre (SA c/l)	PETROL 95 ULP	PETROL 93 ULP & LRP	DIESEL 0.05%	DIESEL 0.005%	ILL. PAR.
GAUTENG PUMP PRICE AS FROM 07/02/2024	2,324.000	2,292.000	-	-	-
WHOLESALE PRICE AS FROM 07/02/2024	-	-	2,136.170	2,142.570	1,583.938
SINGLE NATIONAL MAXIMUM RETAIL PRICE AS FROM 07/02/2024	-	-	-	-	2,052.000
BASIC FUEL PRICE - 08/02/2024	1,345.493	1,312.196	1,450.814	1,475.709	1,432.168
PRESS RELEASE CONTRIBUTION TO BFP 07/02/2024 - 08/02/2024	1,221.870	1,189.870	1,313.630	1,320.030	1,337.128
UNIT OVER/(UNDER) RECOVERY - 08/02/2024	(123.623)	(122.326)	(137.184)	(155.679)	(95.040)
AVERAGE BASIC FUEL PRICE 02/02/2024 - 08/02/2024	1,311.722	1,274.325	1,408.387	1,428.986	1,395.951
AVERAGE UNIT OVER/(UNDER) RECOVERY 02/02/2024 - 08/02/2024	(134.852)	(129.455)	(138.557)	(150.956)	(90.623)

ANALYSIS MOVEMENT OF AVERAGE OVER/(UNDER) RECOVERY

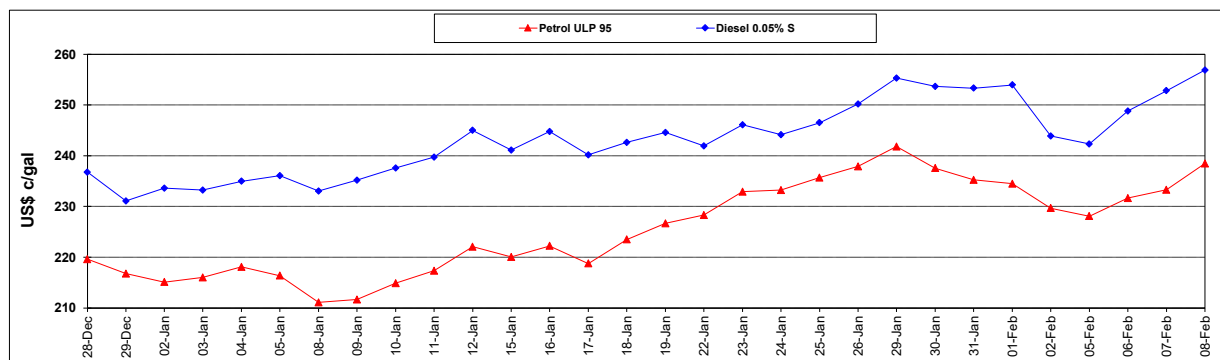
	PETROL 95	PETROL 93	DIESEL 0.05%	DIESEL 0.005%	ILL. PAR.
- MOVEMENT IN INTERNATIONAL PRODUCT PRICES	(126.973)	(121.801)	(130.097)	(142.373)	(82.238)
- MOVEMENT IN EXCHANGE RATE	(7.879)	(7.654)	(8.460)	(8.583)	(8.385)
AVERAGE UNIT OVER/(UNDER) RECOVERY 02/02/2024 - 08/02/2024	(134.852)	(129.455)	(138.557)	(150.956)	(90.623)

R/\$ EXCHANGE RATE - (R/\$18.9675 - 08/02/2024)

EXCHANGE RATE USED IN BASIC FUEL PRICE



INTERNATIONAL PRODUCT PRICES OF BASKET USED IN BASIC FUEL PRICE



BASIC FUEL PRICE IN SA CENTS PER LITRE

