

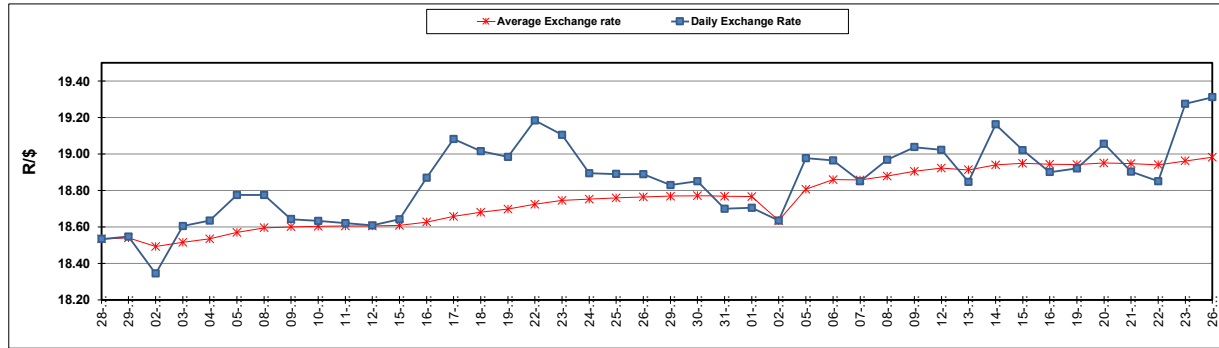
South African Cents per Litre (SA c/l)	PETROL 95 ULP	PETROL 93 ULP & LRP	DIESEL 0.05%	DIESEL 0.005%	ILL. PAR.
GAUTENG PUMP PRICE AS FROM 07/02/2024	2,324.000	2,292.000	-	-	-
WHOLESALE PRICE AS FROM 07/02/2024	-	-	2,136.170	2,142.570	1,583.938
SINGLE NATIONAL MAXIMUM RETAIL PRICE AS FROM 07/02/2024	-	-	-	-	2,052.000
BASIC FUEL PRICE - 26/02/2024	1,345.090	1,307.051	1,400.065	1,413.382	1,386.143
PRESS RELEASE CONTRIBUTION TO BFP 07/02/2024 - 26/02/2024	1,221.870	1,189.870	1,313.630	1,320.030	1,337.128
UNIT OVER/(UNDER) RECOVERY - 26/02/2024	(123.220)	(117.181)	(86.435)	(93.352)	(49.015)
AVERAGE BASIC FUEL PRICE 02/02/2024 - 26/02/2024	1,326.158	1,289.939	1,411.488	1,432.349	1,395.201
AVERAGE UNIT OVER/(UNDER) RECOVERY 02/02/2024 - 26/02/2024	(117.523)	(113.304)	(110.740)	(124.672)	(67.426)

ANALYSIS MOVEMENT OF AVERAGE OVER/(UNDER) RECOVERY

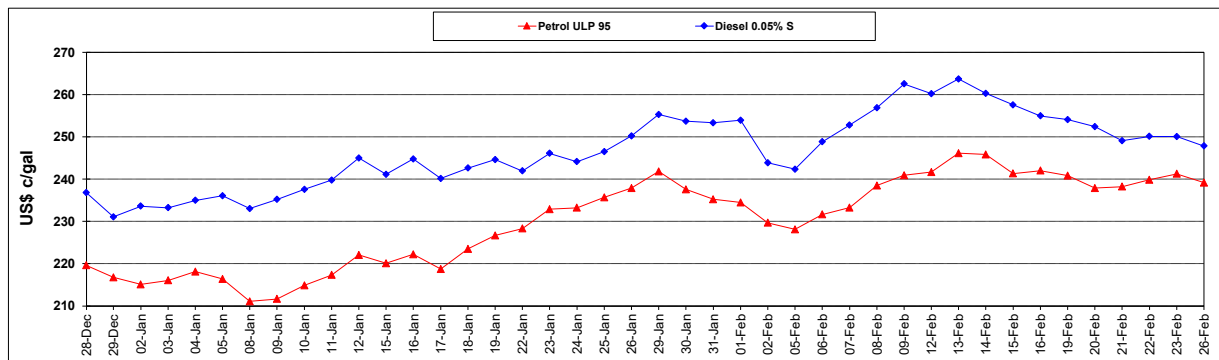
	PETROL 95	PETROL 93	DIESEL 0.05%	DIESEL 0.005%	ILL. PAR.
- MOVEMENT IN INTERNATIONAL PRODUCT PRICES	(102.370)	(98.565)	(94.612)	(108.305)	(51.484)
- MOVEMENT IN EXCHANGE RATE	(15.153)	(14.739)	(16.128)	(16.367)	(15.942)
AVERAGE UNIT OVER/(UNDER) RECOVERY 02/02/2024 - 26/02/2024	(117.523)	(113.304)	(110.740)	(124.672)	(67.426)

R/\$ EXCHANGE RATE - (R/\$19.3113 - 26/02/2024)

EXCHANGE RATE USED IN BASIC FUEL PRICE



INTERNATIONAL PRODUCT PRICES OF BASKET USED IN BASIC FUEL PRICE



BASIC FUEL PRICE IN SA CENTS PER LITRE

