

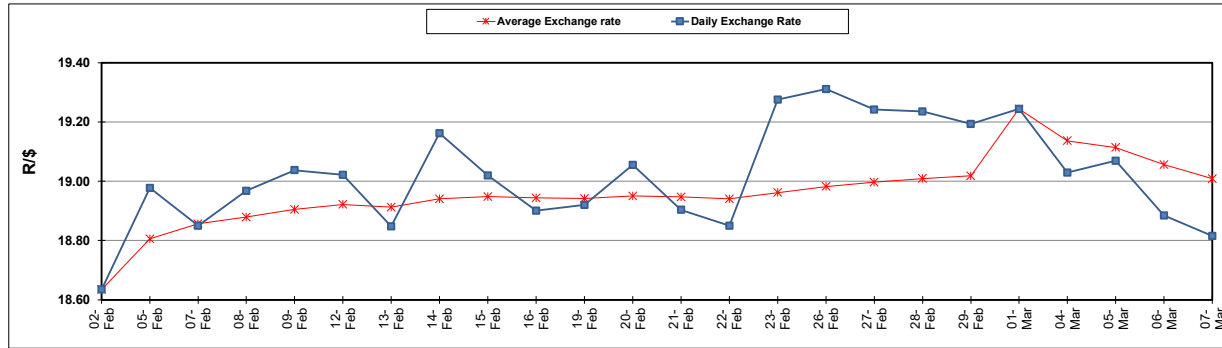
South African Cents per Litre (SA c/l)	PETROL 95 ULP	PETROL 93 ULP & LRP	DIESEL 0.05%	DIESEL 0.005%	ILL. PAR.
GAUTENG PUMP PRICE AS FROM 06/03/2024	2,445.000	2,413.000	-	-	-
WHOLESALE PRICE AS FROM 06/03/2024	-	-	2,241.870	2,261.270	1,647.938
SINGLE NATIONAL MAXIMUM RETAIL PRICE AS FROM 06/03/2024	-	-	-	-	2,137.000
BASIC FUEL PRICE - 07/03/2024	1,295.639	1,264.360	1,361.412	1,372.826	1,335.989
PRESS RELEASE CONTRIBUTION TO BFP 06/03/2024 - 07/03/2024	1,342.870	1,310.870	1,418.630	1,438.030	1,401.128
UNIT OVER/(UNDER) RECOVERY - 07/03/2024	47.231	46.510	57.218	65.204	65.139
AVERAGE BASIC FUEL PRICE 01/03/2024 - 07/03/2024	1,322.836	1,289.625	1,369.966	1,381.474	1,345.263
AVERAGE UNIT OVER/(UNDER) RECOVERY 01/03/2024 - 07/03/2024	(52.566)	(51.355)	(14.336)	(14.244)	17.465

ANALYSIS MOVEMENT OF AVERAGE OVER/(UNDER) RECOVERY

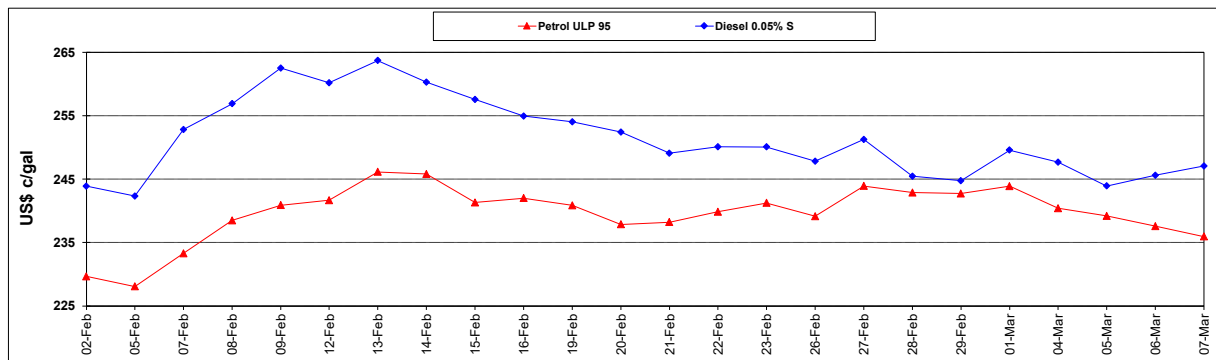
	PETROL 95	PETROL 93	DIESEL 0.05%	DIESEL 0.005%	ILL. PAR.
- MOVEMENT IN INTERNATIONAL PRODUCT PRICES	(53.262)	(52.033)	(15.057)	(14.971)	16.757
- MOVEMENT IN EXCHANGE RATE	0.696	0.678	0.721	0.727	0.708
AVERAGE UNIT OVER/(UNDER) RECOVERY 01/03/2024 - 07/03/2024	(52.566)	(51.355)	(14.336)	(14.244)	17.465

R/\$ EXCHANGE RATE - (R/\$18.8155 - 07/03/2024)

EXCHANGE RATE USED IN BASIC FUEL PRICE



INTERNATIONAL PRODUCT PRICES OF BASKET USED IN BASIC FUEL PRICE



BASIC FUEL PRICE IN SA CENTS PER LITRE

