

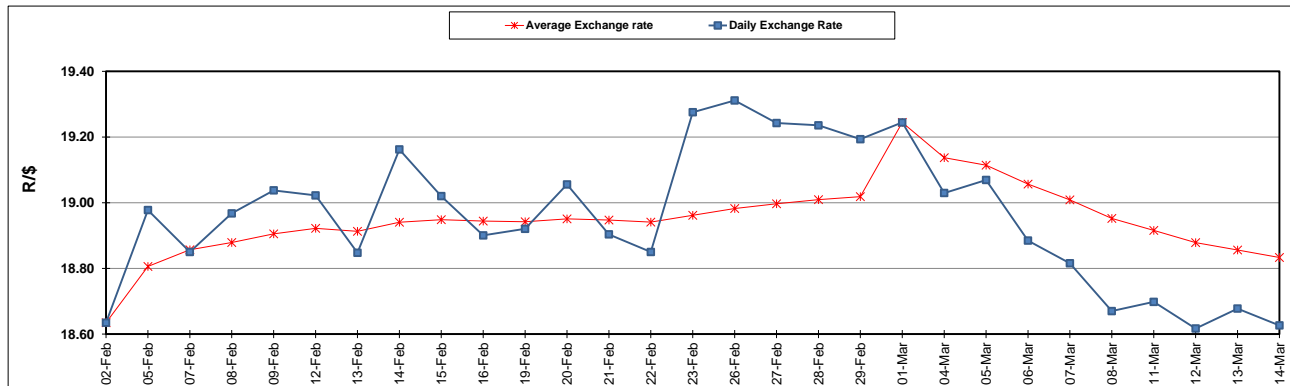
South African Cents per Litre (SA c/l)	PETROL 95 ULP	PETROL 93 ULP & LRP	DIESEL 0.05%	DIESEL 0.005%	ILL. PAR.
GAUTENG PUMP PRICE AS FROM 06/03/2024	2,445.000	2,413.000	-	-	-
WHOLESALE PRICE AS FROM 06/03/2024	-	-	2,241.870	2,261.270	1,647.938
SINGLE NATIONAL MAXIMUM RETAIL PRICE AS FROM 06/03/2024	-	-	-	-	2,137.000
BASIC FUEL PRICE - 14/03/2024	1,326.970	1,296.570	1,348.912	1,360.420	1,339.570
PRESS RELEASE CONTRIBUTION TO BFP 06/03/2024 - 14/03/2024	1,342.870	1,310.870	1,418.630	1,438.030	1,401.128
UNIT OVER/(UNDER) RECOVERY - 14/03/2024	15.900	14.300	69.718	77.610	61.558
AVERAGE BASIC FUEL PRICE 01/03/2024 - 14/03/2024	1,316.743	1,283.176	1,354.831	1,366.309	1,335.616
AVERAGE UNIT OVER/(UNDER) RECOVERY 01/03/2024 - 14/03/2024	(10.173)	(8.606)	32.299	36.321	46.312

### ANALYSIS MOVEMENT OF AVERAGE OVER/(UNDER) RECOVERY

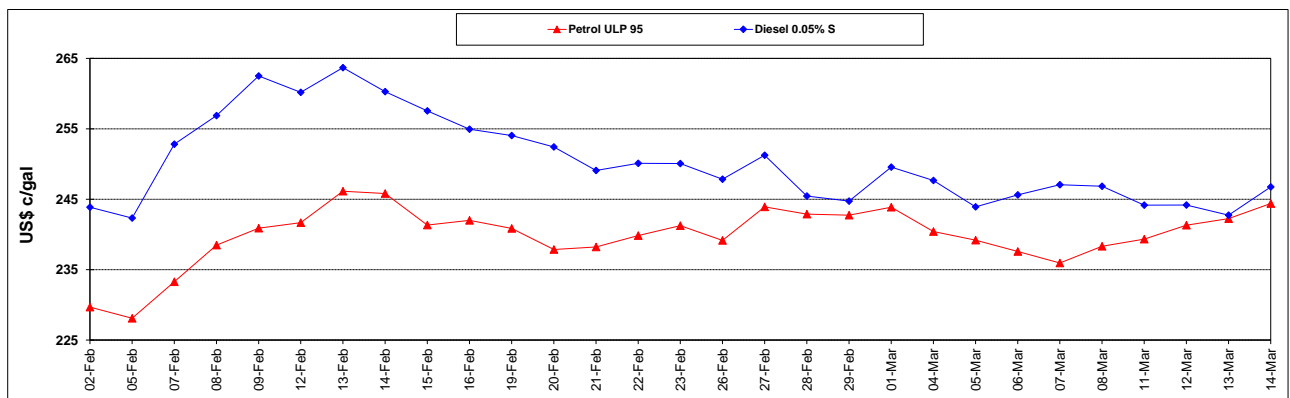
	PETROL 95	PETROL 93	DIESEL 0.05%	DIESEL 0.005%	ILL. PAR.
- MOVEMENT IN INTERNATIONAL PRODUCT PRICES	(23.142)	(21.245)	18.954	22.863	33.157
- MOVEMENT IN EXCHANGE RATE	12.969	12.639	13.345	13.458	13.155
AVERAGE UNIT OVER/(UNDER) RECOVERY 01/03/2024 - 14/03/2024	(10.173)	(8.606)	32.299	36.321	46.312

### R/\$ EXCHANGE RATE - (R/\$18.6263 - 14/03/2024)

### EXCHANGE RATE USED IN BASIC FUEL PRICE



### INTERNATIONAL PRODUCT PRICES OF BASKET USED IN BASIC FUEL PRICE



### BASIC FUEL PRICE IN SA CENTS PER LITRE

