

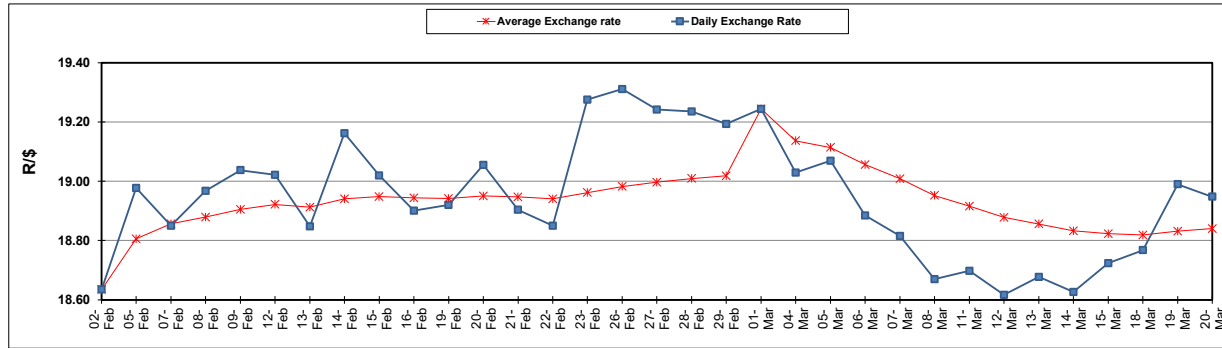
South African Cents per Litre (SA c/l)	PETROL 95 ULP	PETROL 93 ULP & LRP	DIESEL 0.05%	DIESEL 0.005%	ILL. PAR.
GAUTENG PUMP PRICE AS FROM 06/03/2024	2,445.000	2,413.000	-	-	-
WHOLESALE PRICE AS FROM 06/03/2024	-	-	2,241.870	2,261.270	1,647.938
SINGLE NATIONAL MAXIMUM RETAIL PRICE AS FROM 06/03/2024	-	-	-	-	2,137.000
BASIC FUEL PRICE - 20/03/2024	1,421.562	1,387.992	1,400.085	1,412.539	1,381.904
PRESS RELEASE CONTRIBUTION TO BFP 06/03/2024 - 20/03/2024	1,342.870	1,310.870	1,418.630	1,438.030	1,401.128
UNIT OVER/(UNDER) RECOVERY - 20/03/2024	(78.692)	(77.122)	18.545	25.491	19.224
AVERAGE BASIC FUEL PRICE 01/03/2024 - 20/03/2024	1,340.169	1,306.858	1,368.191	1,379.372	1,349.356
AVERAGE UNIT OVER/(UNDER) RECOVERY 01/03/2024 - 20/03/2024	(23.228)	(21.917)	27.939	33.372	38.058

### ANALYSIS MOVEMENT OF AVERAGE OVER/(UNDER) RECOVERY

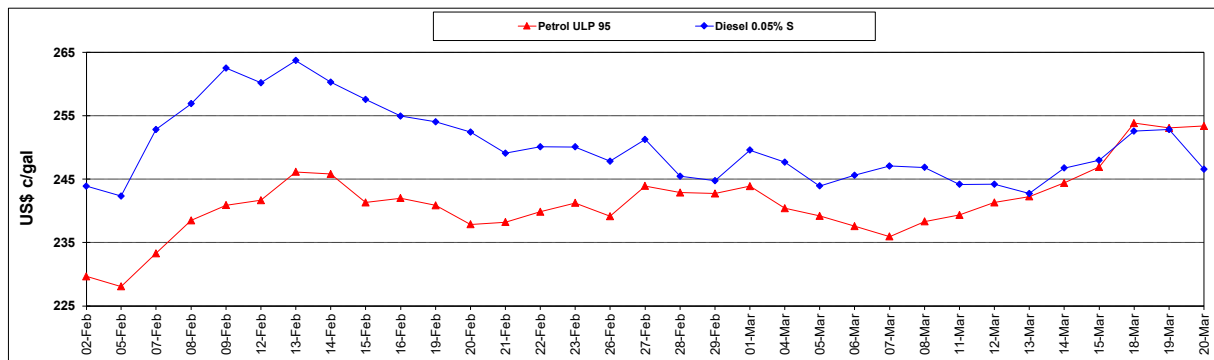
	PETROL 95	PETROL 93	DIESEL 0.05%	DIESEL 0.005%	ILL. PAR.
- MOVEMENT IN INTERNATIONAL PRODUCT PRICES	(35.933)	(34.306)	14.969	20.296	25.266
- MOVEMENT IN EXCHANGE RATE	12.705	12.389	12.970	13.076	12.792
AVERAGE UNIT OVER/(UNDER) RECOVERY 01/03/2024 - 20/03/2024	(23.228)	(21.917)	27.939	33.372	38.058

### R/\$ EXCHANGE RATE - (R/\$18.9478 - 20/03/2024)

### EXCHANGE RATE USED IN BASIC FUEL PRICE



### INTERNATIONAL PRODUCT PRICES OF BASKET USED IN BASIC FUEL PRICE



### BASIC FUEL PRICE IN SA CENTS PER LITRE

