

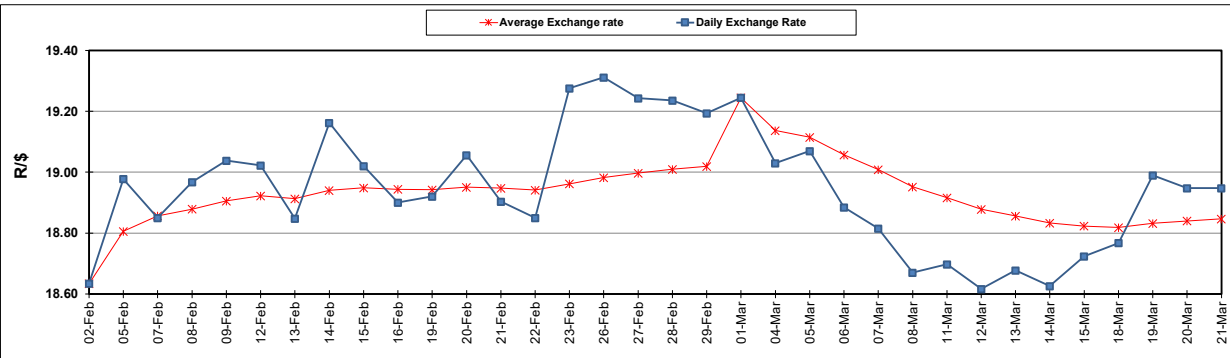
South African Cents per Litre (SA c/l)	PETROL 95 ULP	PETROL 93 ULP & LRP	DIESEL 0.05%	DIESEL 0.005%	ILL. PAR.
GAUTENG PUMP PRICE AS FROM 06/03/2024	2,445.000	2,413.000	-	-	-
WHOLESALE PRICE AS FROM 06/03/2024	-	-	2,241.870	2,261.270	1,647.938
SINGLE NATIONAL MAXIMUM RETAIL PRICE AS FROM 06/03/2024	-	-	-	-	2,137.000
BASIC FUEL PRICE - 21/03/2024	1,421.849	1,388.049	1,386.634	1,401.924	1,374.641
PRESS RELEASE CONTRIBUTION TO BFP 06/03/2024 - 21/03/2024	1,342.870	1,310.870	1,418.630	1,438.030	1,401.128
UNIT OVER/(UNDER) RECOVERY - 21/03/2024	(78.979)	(77.179)	31.996	36.106	26.487
AVERAGE BASIC FUEL PRICE 01/03/2024 - 21/03/2024	1,345.614	1,312.271	1,369.420	1,380.875	1,351.042
AVERAGE UNIT OVER/(UNDER) RECOVERY 01/03/2024 - 21/03/2024	(26.944)	(25.601)	28.210	33.555	37.286

ANALYSIS MOVEMENT OF AVERAGE OVER/(UNDER) RECOVERY

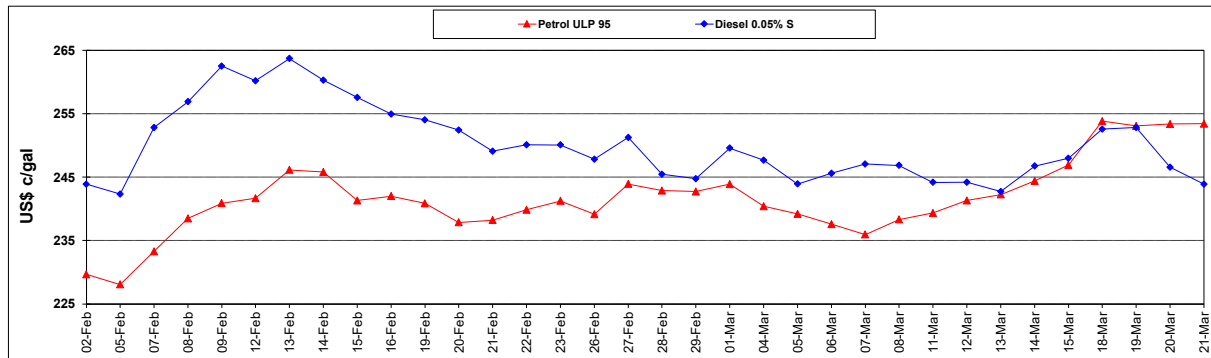
	PETROL 95	PETROL 93	DIESEL 0.05%	DIESEL 0.005%	ILL. PAR.
- MOVEMENT IN INTERNATIONAL PRODUCT PRICES	(39.181)	(37.535)	15.756	20.997	24.999
- MOVEMENT IN EXCHANGE RATE	12.237	11.934	12.454	12.558	12.287
AVERAGE UNIT OVER/(UNDER) RECOVERY 01/03/2024 - 21/03/2024	(26.944)	(25.601)	28.210	33.555	37.286

R/\$ EXCHANGE RATE - (R/\$18.9478 - 21/03/2024)

EXCHANGE RATE USED IN BASIC FUEL PRICE



INTERNATIONAL PRODUCT PRICES OF BASKET USED IN BASIC FUEL PRICE



BASIC FUEL PRICE IN SA CENTS PER LITRE

