

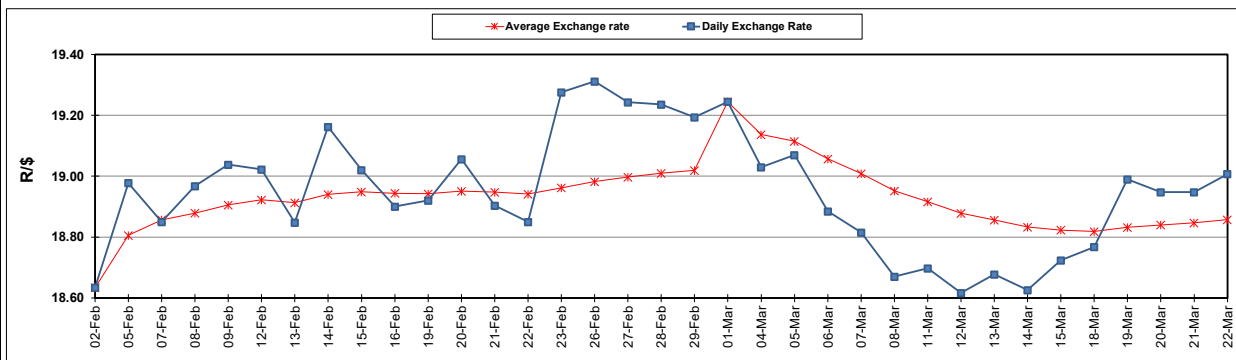
South African Cents per Litre (SA c/l)	PETROL 95 ULP	PETROL 93 ULP & LRP	DIESEL 0.05%	DIESEL 0.005%	ILL. PAR.
GAUTENG PUMP PRICE AS FROM 06/03/2024	2,445.000	2,413.000	-	-	-
WHOLESALE PRICE AS FROM 06/03/2024	-	-	2,241.870	2,261.270	1,647.938
SINGLE NATIONAL MAXIMUM RETAIL PRICE AS FROM 06/03/2024	-	-	-	-	2,137.000
BASIC FUEL PRICE - 22/03/2024	1,431.390	1,394.430	1,389.407	1,404.651	1,376.409
PRESS RELEASE CONTRIBUTION TO BFP 06/03/2024 - 22/03/2024	1,342.870	1,310.870	1,418.630	1,438.030	1,401.128
UNIT OVER/(UNDER) RECOVERY - 22/03/2024	(88.520)	(83.560)	29.223	33.379	24.719
AVERAGE BASIC FUEL PRICE 01/03/2024 - 22/03/2024	1,350.975	1,317.406	1,370.670	1,382.361	1,352.627
AVERAGE UNIT OVER/(UNDER) RECOVERY 01/03/2024 - 22/03/2024	(30.792)	(29.223)	28.273	33.544	36.501

ANALYSIS MOVEMENT OF AVERAGE OVER/(UNDER) RECOVERY

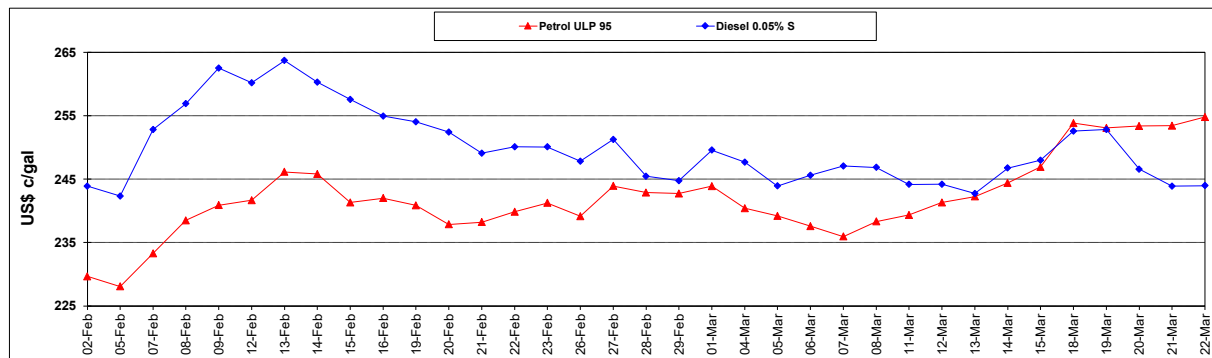
	PETROL 95	PETROL 93	DIESEL 0.05%	DIESEL 0.005%	ILL. PAR.
- MOVEMENT IN INTERNATIONAL PRODUCT PRICES	(42.355)	(40.499)	16.541	21.712	24.924
- MOVEMENT IN EXCHANGE RATE	11.563	11.276	11.732	11.832	11.577
AVERAGE UNIT OVER/(UNDER) RECOVERY 01/03/2024 - 22/03/2024	(30.792)	(29.223)	28.273	33.544	36.501

R/\$ EXCHANGE RATE - (R/\$19.007 - 22/03/2024)

EXCHANGE RATE USED IN BASIC FUEL PRICE



INTERNATIONAL PRODUCT PRICES OF BASKET USED IN BASIC FUEL PRICE



BASIC FUEL PRICE IN SA CENTS PER LITRE

