

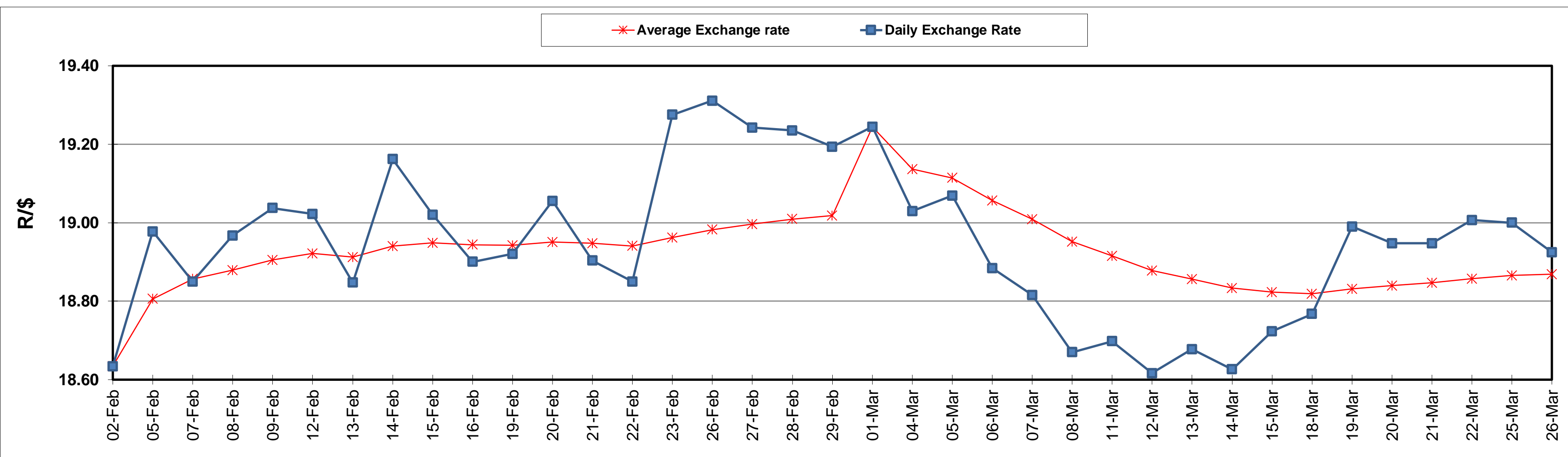
South African Cents per Litre (SA c/l)	PETROL 95 ULP	PETROL 93 ULP & LRP	DIESEL 0.05%	DIESEL 0.005%	ILL. PAR.
GAUTENG PUMP PRICE AS FROM 06/03/2024	2,445.000	2,413.000	-	-	-
WHOLESALE PRICE AS FROM 06/03/2024	-	-	2,241.870	2,261.270	1,647.938
SINGLE NATIONAL MAXIMUM RETAIL PRICE AS FROM 06/03/2024	-	-	-	-	2,137.000
BASIC FUEL PRICE - 26/03/2024	1,418.835	1,382.033	1,374.493	1,390.396	1,358.202
PRESS RELEASE CONTRIBUTION TO BFP 06/03/2024 - 26/03/2024	1,342.870	1,310.870	1,418.630	1,438.030	1,401.128
UNIT OVER/(UNDER) RECOVERY - 26/03/2024	(75.965)	(71.163)	44.137	47.634	42.926
AVERAGE BASIC FUEL PRICE 01/03/2024 - 26/03/2024	1,359.318	1,325.382	1,371.655	1,383.840	1,353.839
AVERAGE UNIT OVER/(UNDER) RECOVERY 01/03/2024 - 26/03/2024	(36.615)	(34.679)	29.475	34.523	36.622

ANALYSIS MOVEMENT OF AVERAGE OVER/(UNDER) RECOVERY

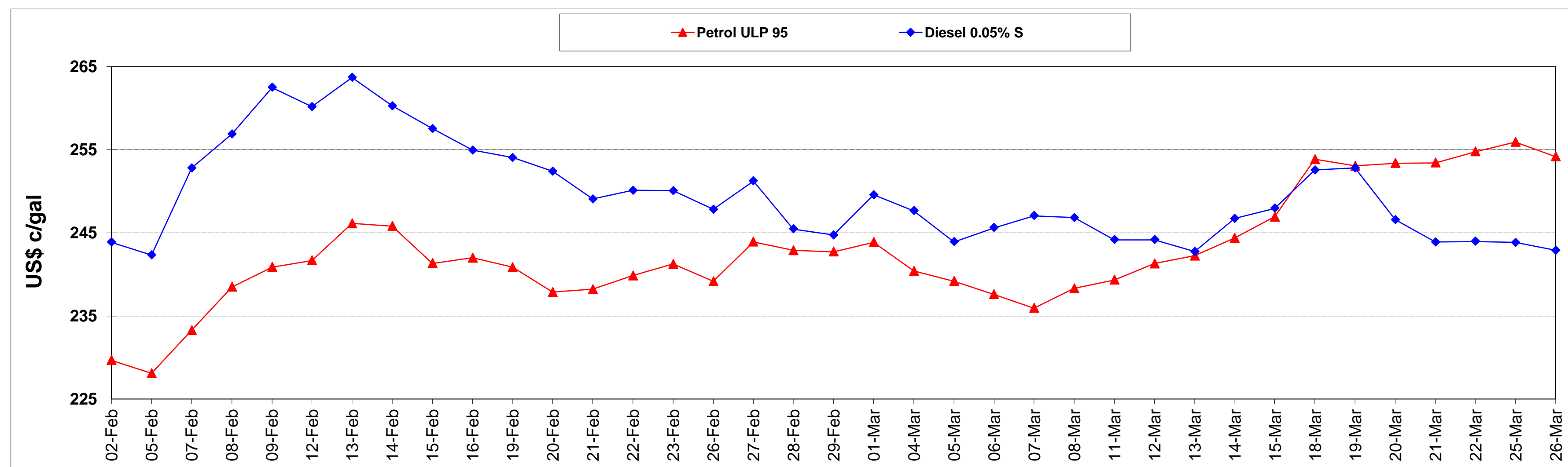
	PETROL 95	PETROL 93	DIESEL 0.05%	DIESEL 0.005%	ILL. PAR.
- MOVEMENT IN INTERNATIONAL PRODUCT PRICES	(47.399)	(45.194)	18.593	23.544	25.881
- MOVEMENT IN EXCHANGE RATE	10.784	10.515	10.882	10.979	10.741
AVERAGE UNIT OVER/(UNDER) RECOVERY 01/03/2024 - 26/03/2024	(36.615)	(34.679)	29.475	34.523	36.622

R/\$ EXCHANGE RATE - (R/\$18.9245 - 26/03/2024)

EXCHANGE RATE USED IN BASIC FUEL PRICE



INTERNATIONAL PRODUCT PRICES OF BASKET USED IN BASIC FUEL PRICE



BASIC FUEL PRICE IN SA CENTS PER LITRE

