

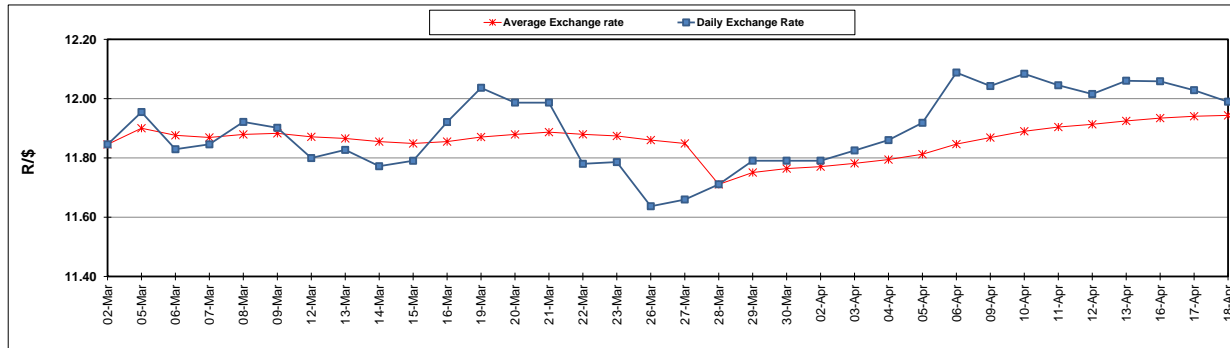
	PETROL 95 ULP	PETROL 93 ULP & LRP	DIESEL 0.05%	DIESEL 0.005%	ILL. PAR.
GAUTENG PUMP PRICE (SA c/l) AS FROM 07/03/2018	1 448.000	1 423.000	-	-	-
WHOLESALE PRICE (SA c/l) AS FROM 07/03/2018	-	-	1 274.830	1 280.230	793.088
SINGLE NATIONAL MAXIMUM RETAIL PRICE	-	-	-	-	1 026.000
BASIC FUEL PRICE - 18/04/2018 (SA c/l)	652.382	636.372	671.664	676.037	687.421
PRESS RELEASE CONTRIBUTION TO BFP 04/04/2018 - 18/04/2018 (SA c/l)	596.070	581.070	601.630	607.030	620.128
UNIT OVER/(UNDER) RECOVERY - 18/04/2018 (SA c/l)	(56.312)	(55.302)	(70.034)	(69.007)	(67.293)
AVERAGE BASIC FUEL PRICE 28/03/2018 - 18/04/2018	636.723	621.167	652.125	657.220	665.230
AVERAGE UNIT OVER/(UNDER) RECOVERY 28/03/2018 - 18/04/2018	(43.746)	(42.253)	(51.432)	(51.128)	(43.539)

ANALYSIS MOVEMENT OF AVERAGE OVER/(UNDER) RECOVERY

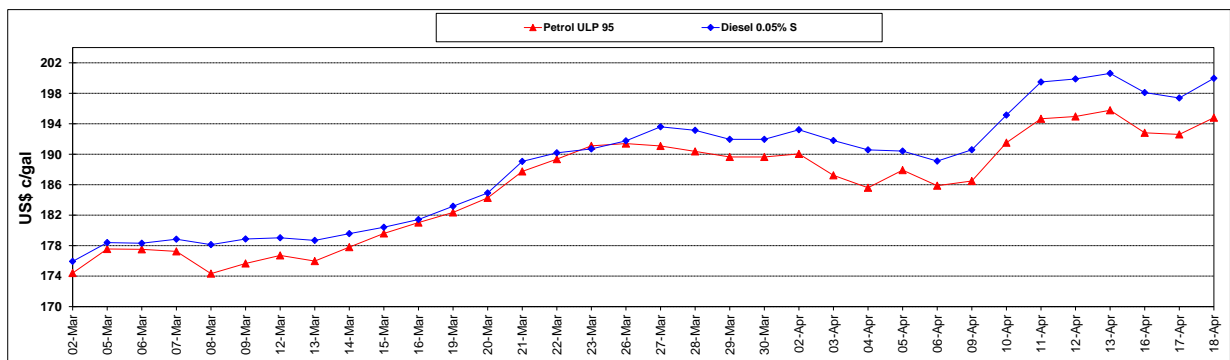
	PETROL 95	PETROL 93	DIESEL 0.05%	DIESEL 0.005%	ILL. PAR.
- MOVEMENT IN INTERNATIONAL PRODUCT PRICES	(38.698)	(37.328)	(46.261)	(45.916)	(38.264)
- MOVEMENT IN EXCHANGE RATE	(5.049)	(4.925)	(5.171)	(5.211)	(5.275)
AVERAGE UNIT OVER/(UNDER) RECOVERY 28/03/2018 - 18/04/2018	(43.746)	(42.253)	(51.432)	(51.128)	(43.539)

R/\$ EXCHANGE RATE - (R/\$11.9895 - 18/04/2018)

EXCHANGE RATE USED IN BASIC FUEL PRICE



INTERNATIONAL PRODUCT PRICES OF BASKET USED IN BASIC FUEL PRICE



BASIC FUEL PRICE IN SA CENTS PER LITRE

