

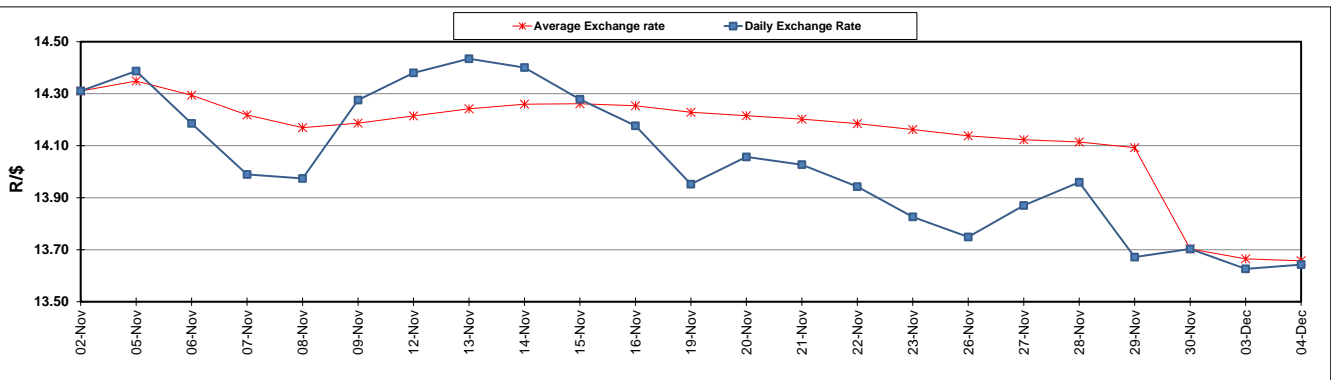
	PETROL 95 ULP	PETROL 93 ULP & LRP	DIESEL 0.05%	DIESEL 0.005%	ILL. PAR.
GAUTENG PUMP PRICE (SA c/l) AS FROM 05/12/2018	1 524.000	1 501.000	-	-	-
WHOLESALE PRICE (SA c/l) AS FROM 05/12/2018	-	-	1 467.340	1 472.740	951.678
SINGLE NATIONAL MAXIMUM RETAIL PRICE	-	-	-	-	1 231.000
BASIC FUEL PRICE - 04/12/2018 (SA c/l)	571.903	561.320	672.961	676.834	682.576
PRESS RELEASE CONTRIBUTION TO BFP 30/11/2018 - 04/12/2018 (SA c/l)	829.250	816.250	917.630	925.030	912.128
UNIT OVER/(UNDER) RECOVERY - 04/12/2018 (SA c/l)	257.347	254.930	244.669	248.196	229.552
AVERAGE BASIC FUEL PRICE 30/11/2018 - 04/12/2018	567.269	557.731	663.449	666.931	675.822
AVERAGE UNIT OVER/(UNDER) RECOVERY 30/11/2018 - 04/12/2018	261.981	258.519	254.181	258.099	236.306

ANALYSIS MOVEMENT OF AVERAGE OVER/(UNDER) RECOVERY

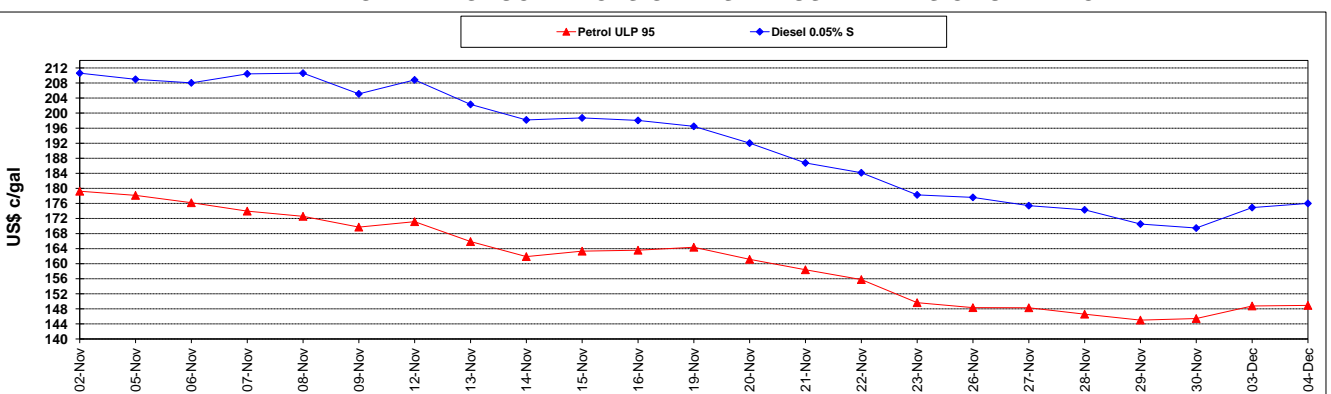
	PETROL 95	PETROL 93	DIESEL 0.05%	DIESEL 0.005%	ILL. PAR.
- MOVEMENT IN INTERNATIONAL PRODUCT PRICES	243.913	240.755	233.049	236.857	214.780
- MOVEMENT IN EXCHANGE RATE	18.068	17.764	21.132	21.242	21.526
AVERAGE UNIT OVER/(UNDER) RECOVERY 30/11/2018 - 04/12/2018	261.981	258.519	254.181	258.099	236.306

R/\$ EXCHANGE RATE - (R/\$13.6425 - 04/12/2018)

EXCHANGE RATE USED IN BASIC FUEL PRICE



INTERNATIONAL PRODUCT PRICES OF BASKET USED IN BASIC FUEL PRICE



BASIC FUEL PRICE IN SA CENTS PER LITRE

