

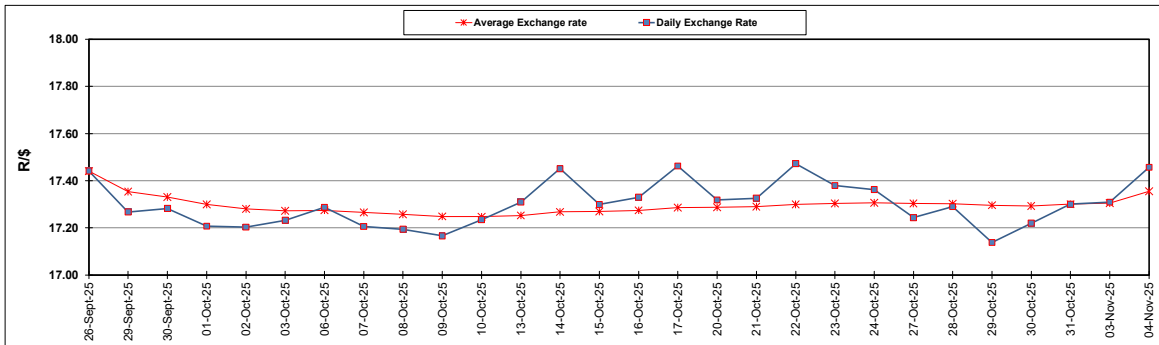
South African Cents per Litre (SA c/l)	PETROL 95 ULP	PETROL 93 ULP & LRP	DIESEL 0.05%	DIESEL 0.005%	ILL. PAR.
GAUTENG PUMP PRICE AS FROM 05/11/2025	2,112.000	2,097.000	-	-	-
WHOLESALE PRICE AS FROM 05/11/2025	-	-	1,913.350	1,919.750	1,298.618
SINGLE NATIONAL MAXIMUM RETAIL PRICE AS FROM 05/11/2025	-	-	-	-	1,647.000
BASIC FUEL PRICE - 04/11/2025	982.584	962.565	1,112.806	1,129.738	1,099.014
PRESS RELEASE CONTRIBUTION TO BFP 31/10/2025 - 04/11/2025	1,002.770	987.770	1,070.630	1,075.030	1,035.128
UNIT OVER/(UNDER) RECOVERY - 04/11/2025	20.186	25.205	(42.176)	(54.708)	(63.886)
AVERAGE BASIC FUEL PRICE 31/10/2025 - 04/11/2025	977.866	957.487	1,108.769	1,124.012	1,092.743
AVERAGE UNIT OVER/(UNDER) RECOVERY 31/10/2025 - 04/11/2025	24.904	30.283	(38.139)	(48.982)	(57.615)

ANALYSIS MOVEMENT OF AVERAGE OVER/(UNDER) RECOVERY

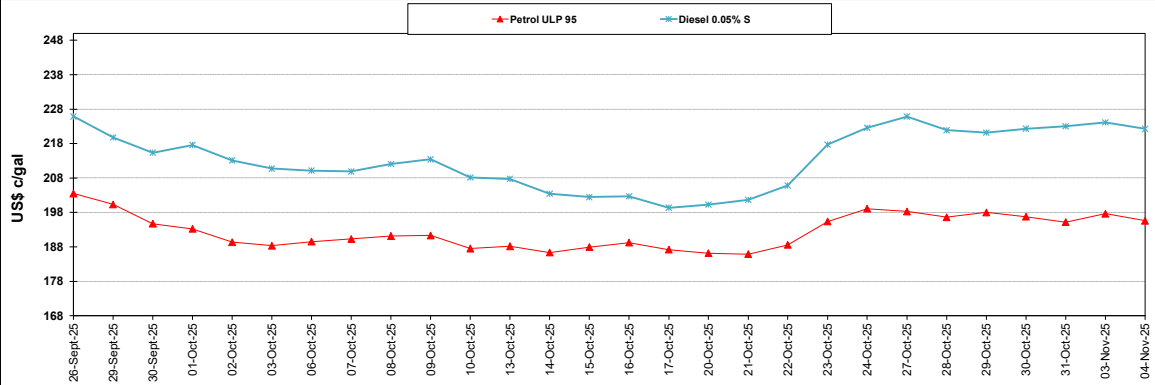
	PETROL 95	PETROL 93	DIESEL 0.05%	DIESEL 0.005%	ILL. PAR.
- MOVEMENT IN INTERNATIONAL PRODUCT PRICES	28.425	33.731	(34.146)	(44.934)	(53.680)
- MOVEMENT IN EXCHANGE RATE	(3.521)	(3.448)	(3.993)	(4.048)	(3.935)
AVERAGE UNIT OVER/(UNDER) RECOVERY 31/10/2025 - 04/11/2025	24.904	30.283	(38.139)	(48.982)	(57.615)

R/\$ EXCHANGE RATE - (R/\$17.4570 - 04/11/2025)

EXCHANGE RATE USED IN BASIC FUEL PRICE



INTERNATIONAL PRODUCT PRICES OF BASKET USED IN BASIC FUEL PRICE



BASIC FUEL PRICE IN SA CENTS PER LITRE

